

**Adding and operating  
IMOU Bullet Lite IPC-G42P camera  
in Partizan mobile application  
and Partizan Cloud Storage service**

**Manual**



**BE DIFFERENT**  
**LEAD** WITH IT

[WWW.PARTIZAN.GLOBAL](http://WWW.PARTIZAN.GLOBAL)

2021

<b>1. Getting started .....</b>	<b>3</b>
<b>2. Dahua CCTV camera connection and setup .....</b>	<b>5</b>
<b>2.1. Connection of CCTV camera and software installation .....</b>	<b>5</b>
<b>2.2. Setup of Dahua CCTV camera parameters in ConfigTool software .....</b>	<b>6</b>
<b>2.3. Firmware update .....</b>	<b>10</b>
<b>2.4. Setup of Dahua CCTV camera web interface.....</b>	<b>12</b>
<b>3. Adding Dahua CCTV camera to Partizan mobile application.....</b>	<b>14</b>

## 1. Getting started



*IMOU Bullet Lite IPC-G42P cameras are supported by **Partizan Cloud Storage** service and **Partizan mobile application**.*

### Partizan Cloud Storage advantages :



Your data cannot be stolen or damaged.



No one can access your devices, as well as live and archived video, without your permission.



Access to your account and devices is possible from anywhere in the world. For this just an access to mobile Internet is enough.



Partizan app won the international award as "**Best Mobile Video Surveillance App 2019**".

To take full advantage of Dahua wired CCTV cameras, install **Partizan mobile app**:



Partizan mobile application for iOS:

<https://apps.apple.com/app/partizan/id1473001227>

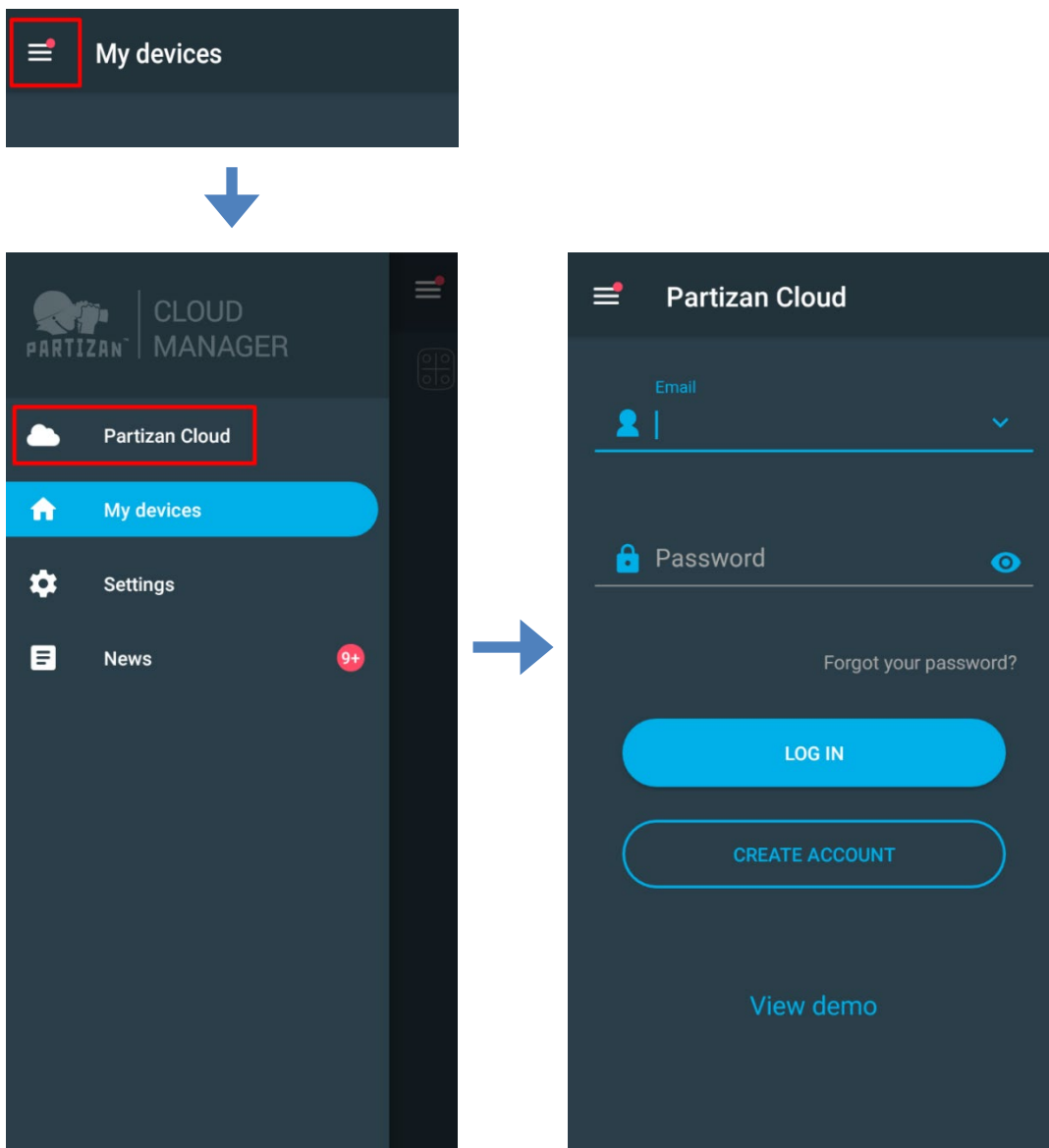


Partizan mobile application for Android:

<https://play.google.com/store/apps/details?id=com.partizan.pro>

To work with **Dahua** CCTV cameras in Partizan mobile application, you need to **log into your cloud account**.

Open the app, use an **existing account** or **create a new one**:



After logging into the cloud account, you can go directly to setting up devices.

**If you have any questions, please contact our technical support:**

E-mail: [support@partizan.global](mailto:support@partizan.global)

Skype: partizan-support

Viber, Telegram, WhatsApp: +420 777 054 888



Technical support working time:  
<https://partizan.global/support/technical-support>



Partizan software:  
<https://apps.partizan.global/>

## 2. Dahua CCTV camera connection and setup

### 2.1. Connection of CCTV camera and software installation

- Connect CCTV camera to the Internet using a LAN cable.
- Install Dahua software on your computer:

[ConfigTool 4.09.0](#) for Microsoft Windows

[https://www.dahua.market/software/General\\_ConfigTool\\_ChnEng\\_V4.09.0.R.20171010.zip](https://www.dahua.market/software/General_ConfigTool_ChnEng_V4.09.0.R.20171010.zip)

[ConfigTool 4.01.0](#) for Mac OS

[https://www.dahua.market/software/411200\\_general\\_configtool\\_eng\\_mac64\\_v4\\_01\\_0\\_r\\_160328\\_tar.gz](https://www.dahua.market/software/411200_general_configtool_eng_mac64_v4_01_0_r_160328_tar.gz)

[Smart PSS](#) for Microsoft Windows XP/Windows 7/Windows 8/Windows 10(32/64 bit)

[https://www.dahua.market/software/DH\\_SmartPSS\\_International\\_Win32\\_IS\\_V2\\_02\\_1\\_R\\_180619.zip](https://www.dahua.market/software/DH_SmartPSS_International_Win32_IS_V2_02_1_R_180619.zip)

[Smart PSS](#) for Mac OS X 10.7 and higher

[https://www.dahua.market/software/473593\\_dh\\_smartpss\\_eng\\_mac\\_is\\_v2.00.0.r.20170120\\_codesign.pkg.zip](https://www.dahua.market/software/473593_dh_smartpss_eng_mac_is_v2.00.0.r.20170120_codesign.pkg.zip)

[Download Smart PSS Software operation manual](#)



**IMPORTANT!**

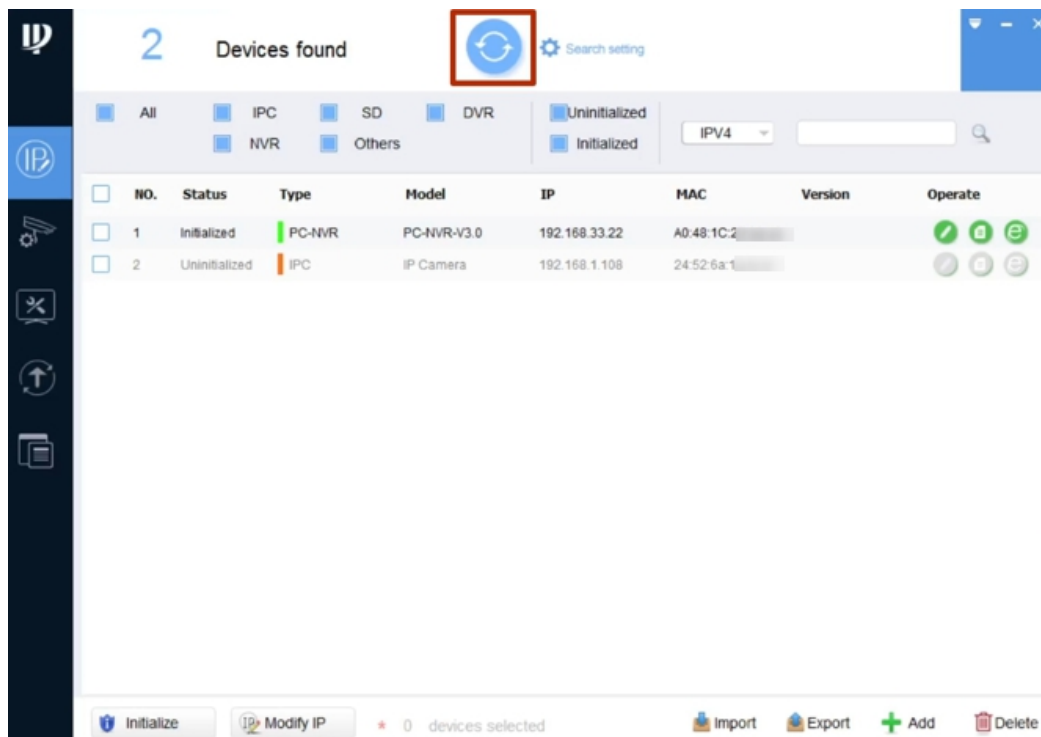
**Computer with the installed software must be in the same local network with the Dahua CCTV camera.**

*Note: ConfigTool software is used in this manual:*

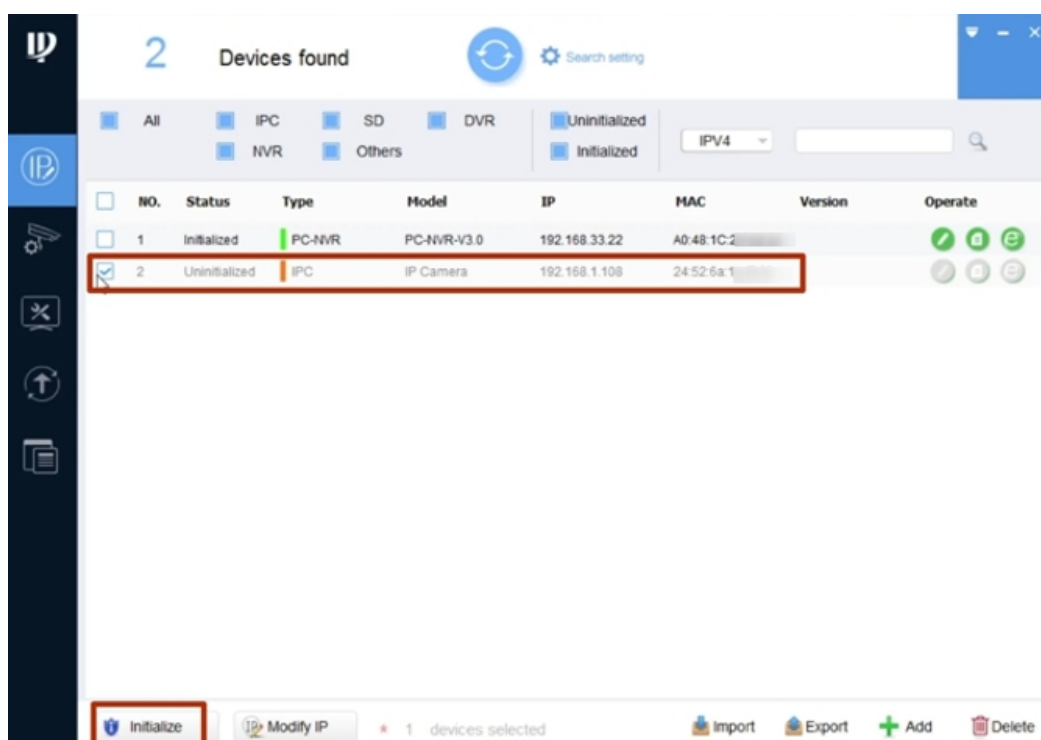


## 2.2. Setup of Dahua CCTV camera parameters in ConfigTool software

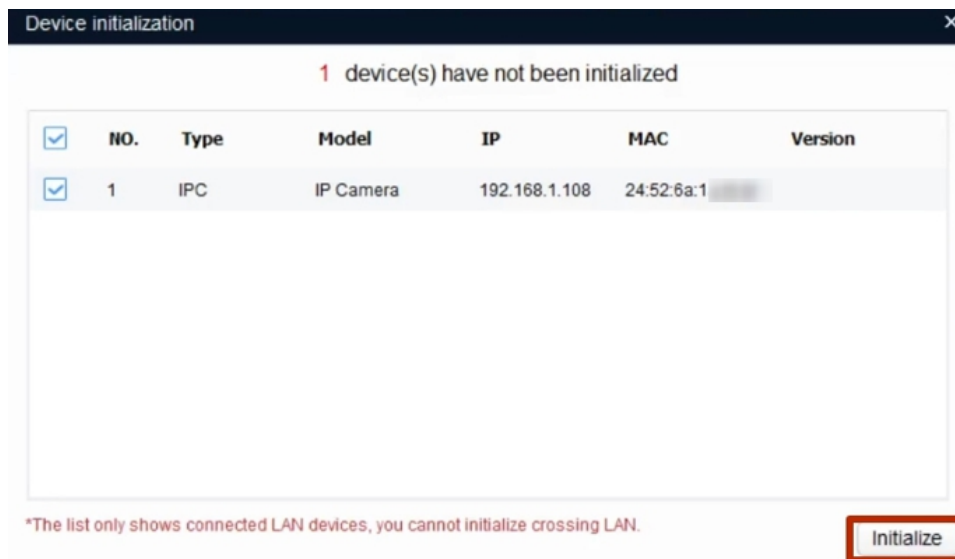
To find the CCTV camera in the local network, run ConfigTool and click **Refresh** button:



Until CCTV camera is configured, it stays in "**Uninitialized**" status.  
Check the camera in the corresponding box and click **Initialize** button.



In **Device initialization** window that opens, click **Initialize** button:



Device initialization

1 device(s) have not been initialized

<input checked="" type="checkbox"/>	NO.	Type	Model	IP	MAC	Version
<input checked="" type="checkbox"/>	1	IPC	IP Camera	192.168.1.108	24:52:6a:1	

\*The list only shows connected LAN devices, you cannot initialize crossing LAN.

**Initialize**

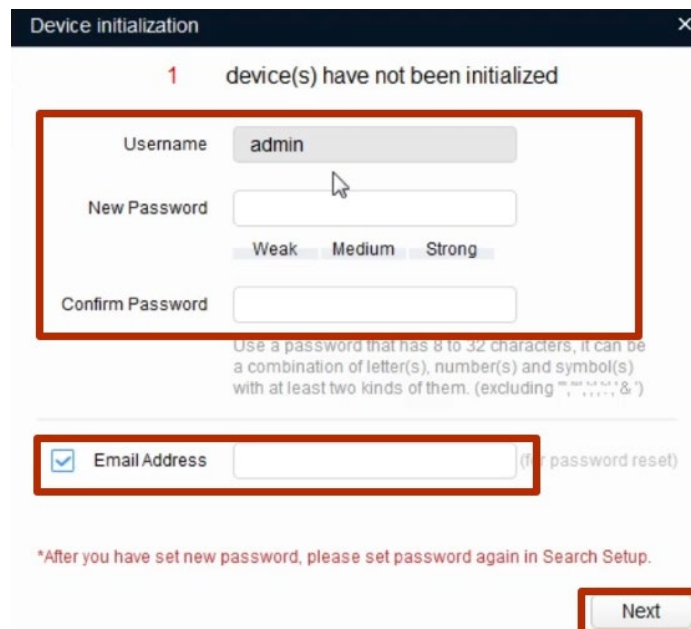
Set a password for your camera.

It must be **at least 8 characters long and consist of letters and numbers.**

The password must be entered twice - in **New Password** and **Confirm Password** fields.

In **Email Address** field, enter your email address to recover your password if you lose it.

After entering all data, click **Next**.



Device initialization

1 device(s) have not been initialized

Username: admin

New Password:

Weak Medium Strong

Confirm Password:

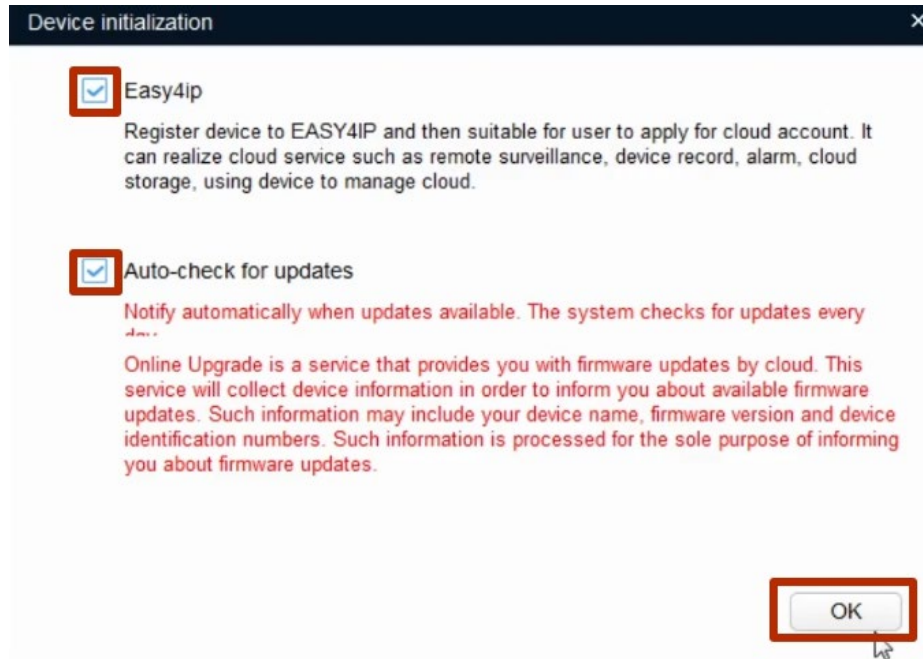
Use a password that has 8 to 32 characters, it can be a combination of letter(s), number(s) and symbol(s) with at least two kinds of them. (excluding " ", " ", " ", " ", " ", " ", " ", " ")

☒ Email Address:  (for password reset)

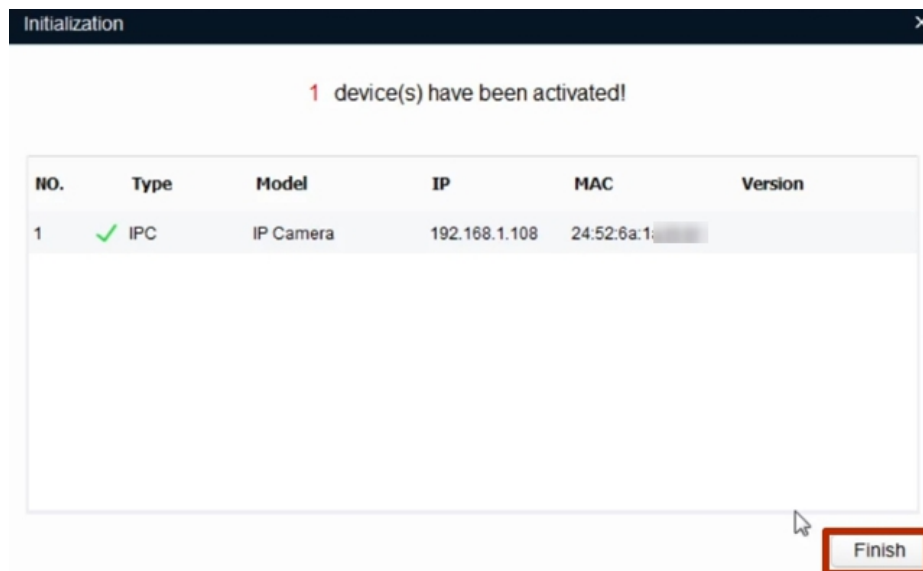
\*After you have set new password, please set password again in Search Setup.

**Next**

In the next window, check **Easy4ip** (remote access) and **Auto-check for updates** (automatic check for updates) items, then click **OK**.

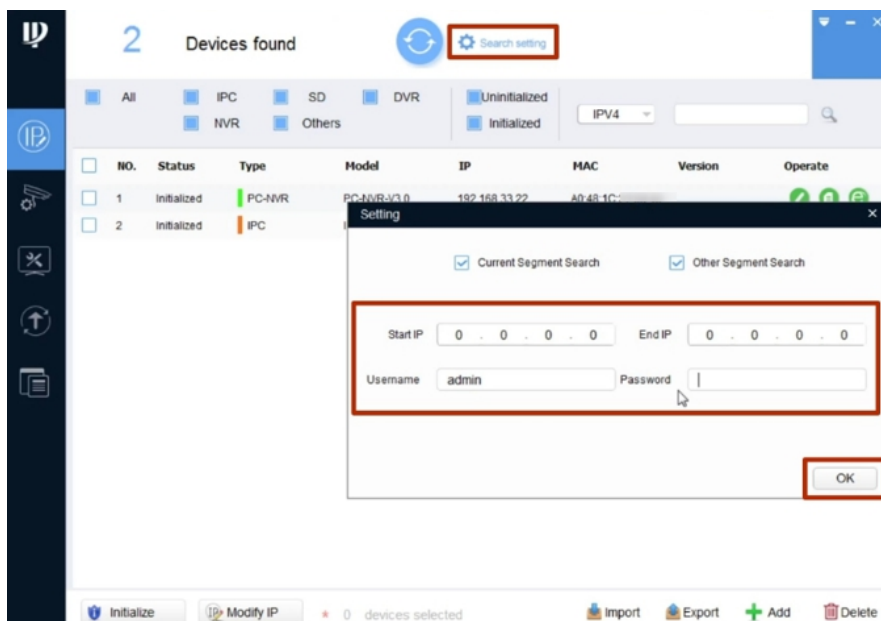


Click **Finish** to confirm initialization of your CCTV camera.





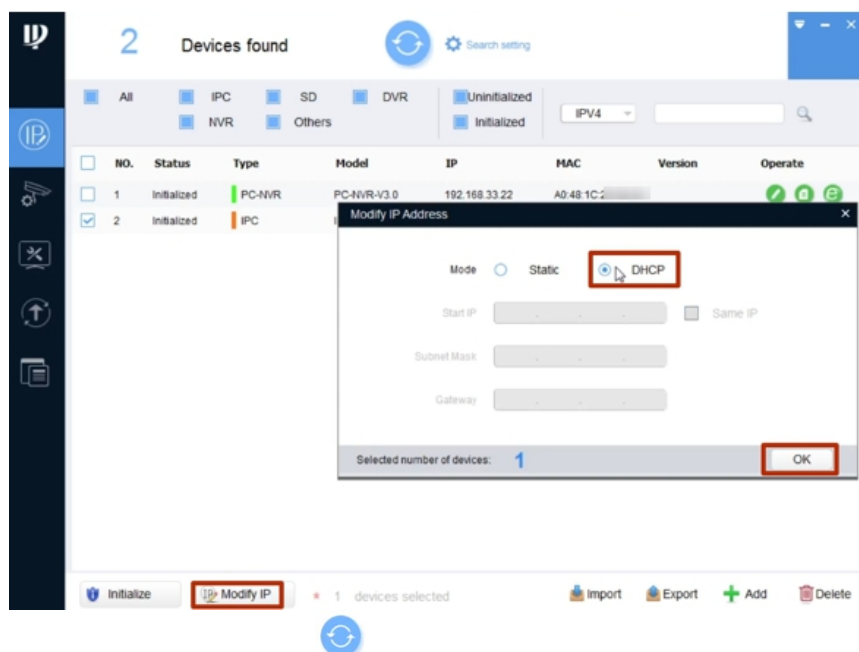
Change the IP address of CCTV camera to match your network settings.  
To do this, click **Search setting**. In the **Password** field, enter the password that you set when activating the camera. Click **Ok**.



Click on **Modify IP button** at the bottom of the program window.  
In the window that opens, you can choose one of two options:

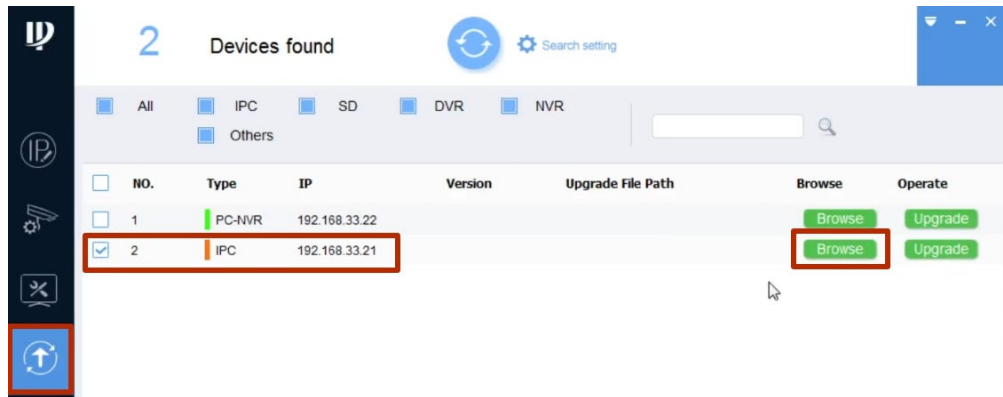
- **Static** - entering network parameters manually.
- **DHCP** - automatic configuration (recommended during initial configuration).

Select **DHCP** and click **OK**.

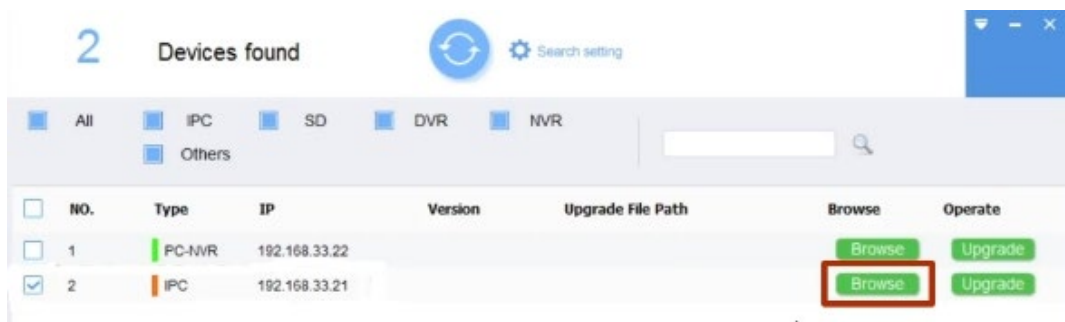


## 2.3. Firmware update

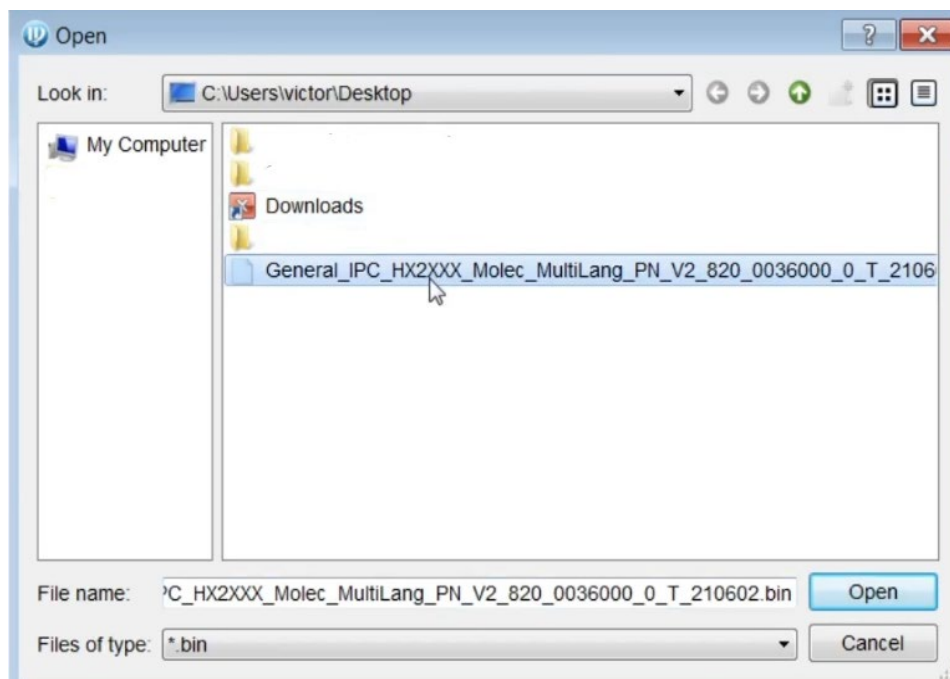
Update the **firmware**. Click the appropriate **Firmware** button in the Main Menu on the left.



Select CCTV camera and click on the **Browse** button.



In the window that opens, select the desired firmware.

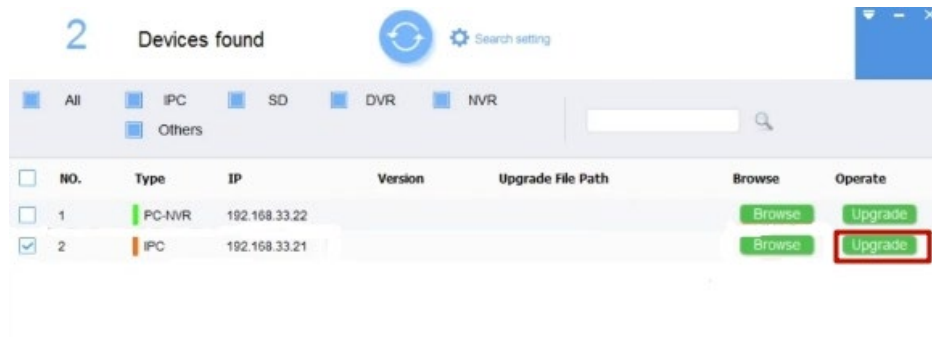






**ATTENTION!**


*You can get the current firmware for your CCTV camera by contacting Partizan Security technical support.*

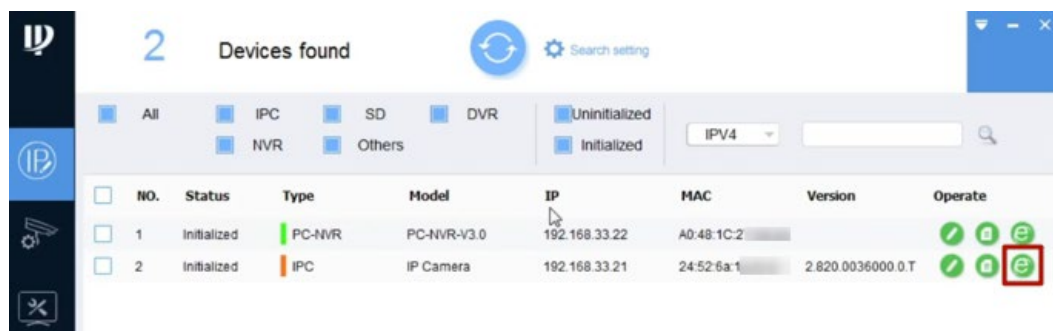
Click **Upgrade** button.



After downloading the firmware, click on the button  in the main menu on the left and then click **Refresh** button .

## 2.4. Setup of Dahua CCTV camera web interface

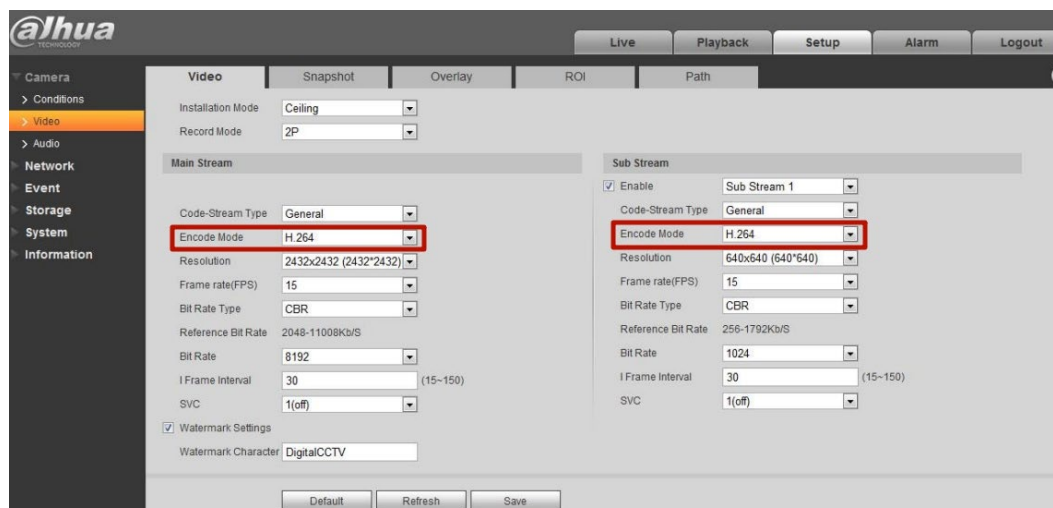
After CCTV camera with the updated firmware appears in the list of devices, click on the button with the symbol  to enter the **web interface of the camera**.



In the window that opens, enter the username **admin** and the **password** that was previously set for this camera.



In the menu on the left in the **Camera** section, open the **Video** tab and, if necessary, change the default codec to **H.264**.

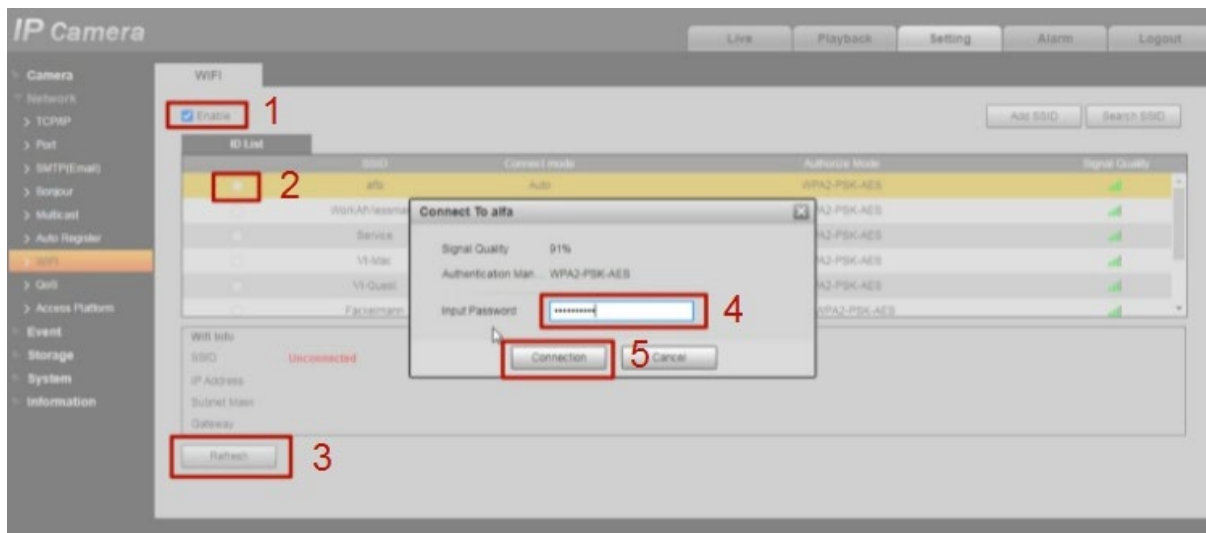


To connect CCTV camera via Wi-Fi, mark **Enable** checkbox in **Wi-Fi** tab, and click **Refresh** button. A list of available Wi-Fi networks will appear in the **ID** field.

Select the desired network (the type of encryption must be wpa/wpa2), in the window that opens enter the password for your Wi-Fi network and click **Connection** button.

If CCTV camera is connected successfully, the connection status will change to **Connected**.

Now CCTV camera patch cord can be disconnected from the router.

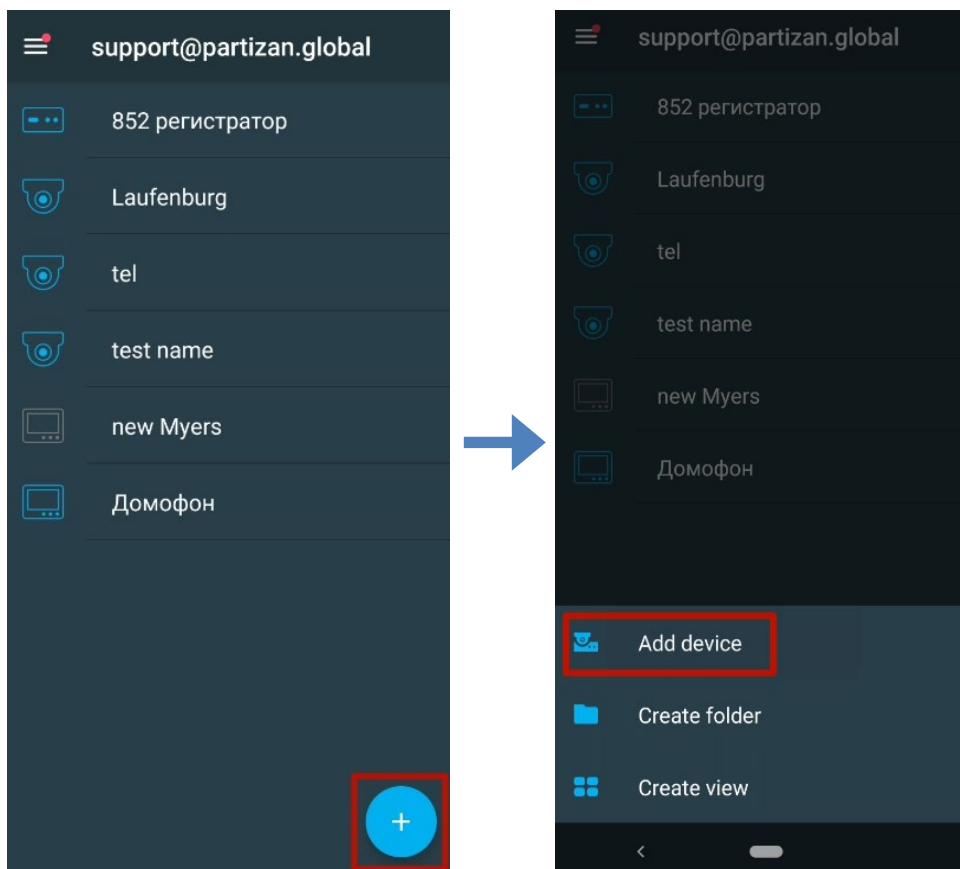


### 3. Adding Dahua CCTV camera to Partizan mobile application

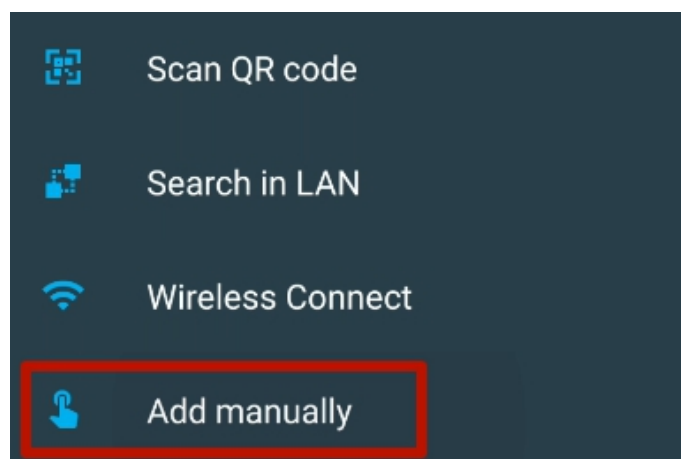
Open the program. Sign in to your Cloud account.

On the main screen of the application, click “+” (Add) button.

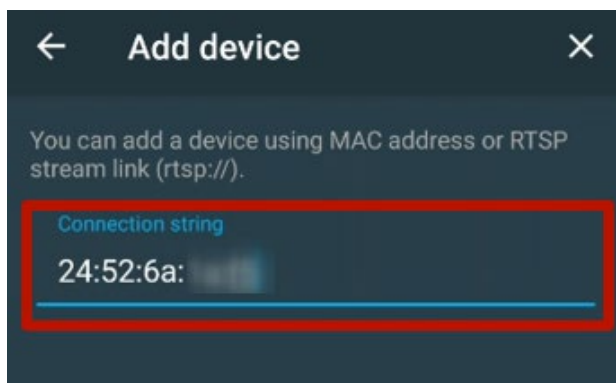
In the menu that opens, select **Add device**.



Press **Add manually**



In the screen that opens, in the **connection line**, enter the **MAC address** obtained in ConfigTool. Click **Next**.

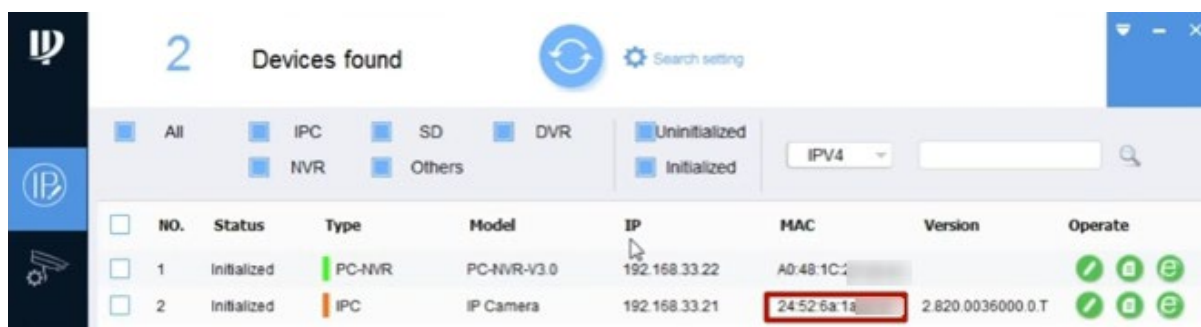


← Add device ×

You can add a device using MAC address or RTSP stream link (rtsp://).

Connection string

24:52:6a:



2 Devices found

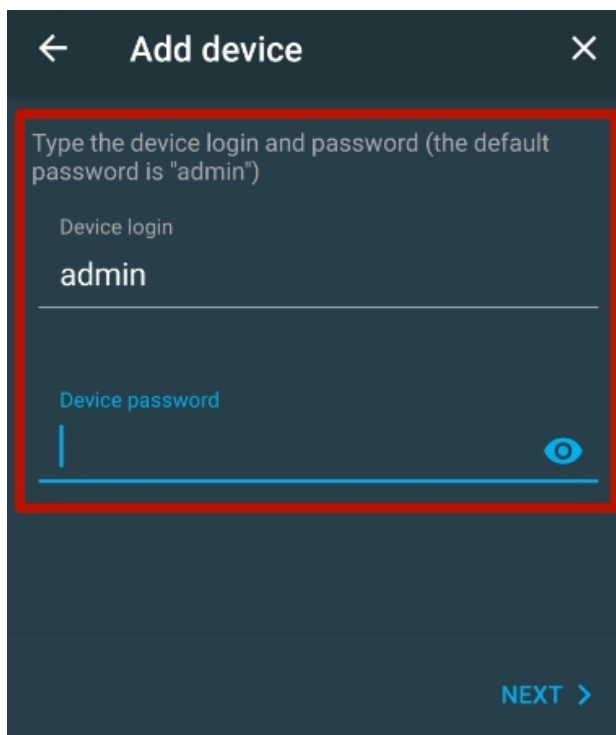
Search setting

All IPC SD DVR Uninitialized Initialized IPV4

NVR Others

NO.	Status	Type	Model	IP	MAC	Version	Operate
1	Initialized	PC-NVR	PC-NVR-V3.0	192.168.33.22	A0:48:1C:1		✓ ⚙️ e
2	Initialized	IPC	IP Camera	192.168.33.21	24:52:6a:1a	2.820.0036000.0.T	✓ ⚙️ e

Enter the previously set **password**. Press **Next**.



← Add device ×

Type the device login and password (the default password is "admin")

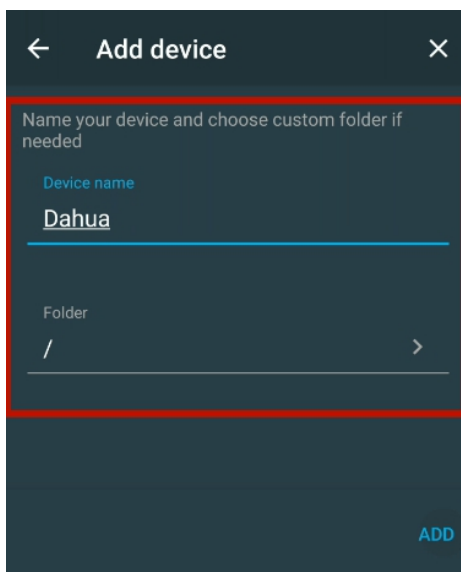
Device login

admin

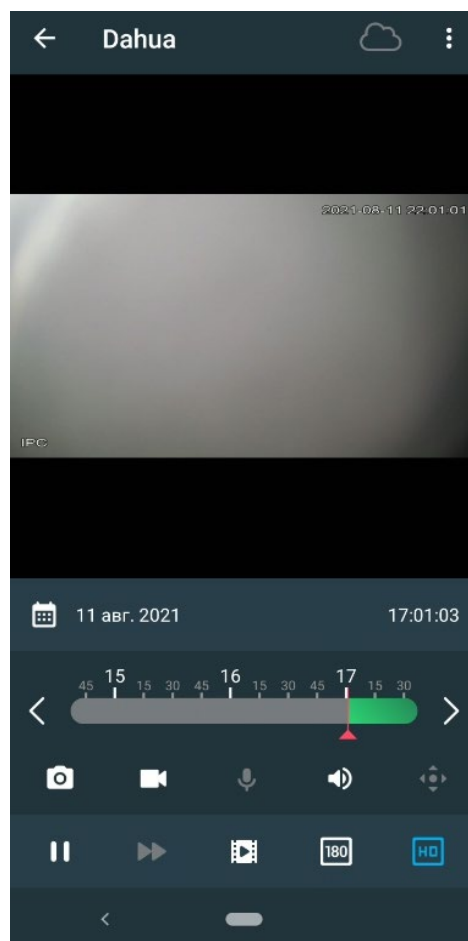
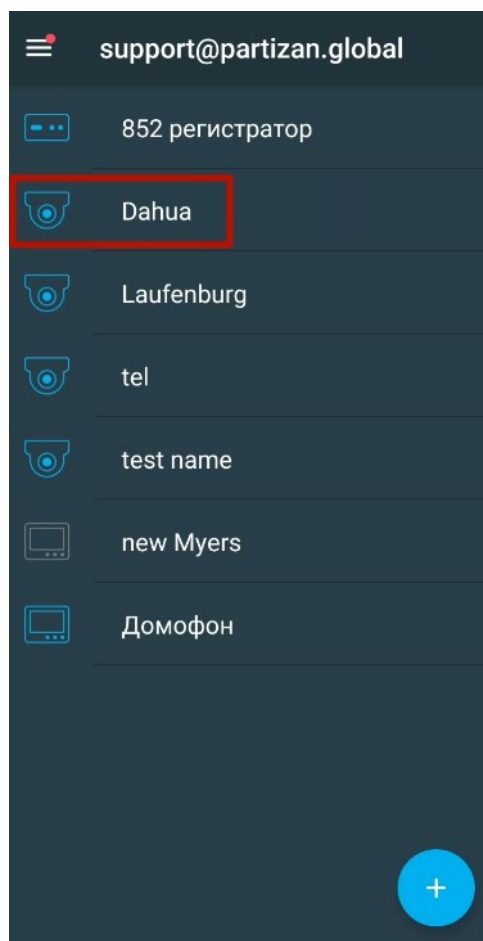
Device password

NEXT >

Enter **CCTV camera name** and, if necessary, specify the path to the folder where it will be stored.  
Click **Add**.



*Done, CCTV camera is connected! Use and enjoy!*





### **Technical support:**

E-mail: [support@partizan.global](mailto:support@partizan.global)

Skype: partizan-support

Chat: +420 777 054 888 (Viber, Telegram, WhatsApp)



Technical support working time:

<https://partizan.global/support/technical-support>



Partizan software:

<https://apps.partizan.global/>