

AHD Cloud series video recorder

Smart function setup guide



BE DIFFERENT
LEAD WITH IT

Content

Enabling Smart function algorithms	Ошибка! Закладка не определена.
Algorithms description.....	Ошибка! Закладка не определена.
1. Intrusion Detection	6
1.1. Line crossing	6
1.2. Perimeter intrusion	8
2. Objects detection	10
2.1. Abandoned object.....	10
2.2. Missing object	11
3. Video analysis	12
4. Enabling human detection algorithm	Ошибка! Закладка не определена.
5. Enabling face detection algorithm	Ошибка! Закладка не определена.

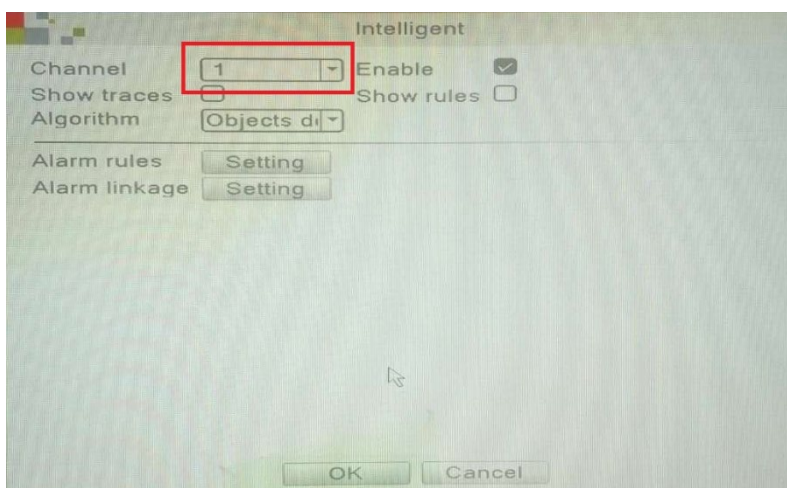
Enabling Smart Function Algorithms

To enable Smart functions - go to the tab “Main menu” => “Alarm” => “Intelligent”

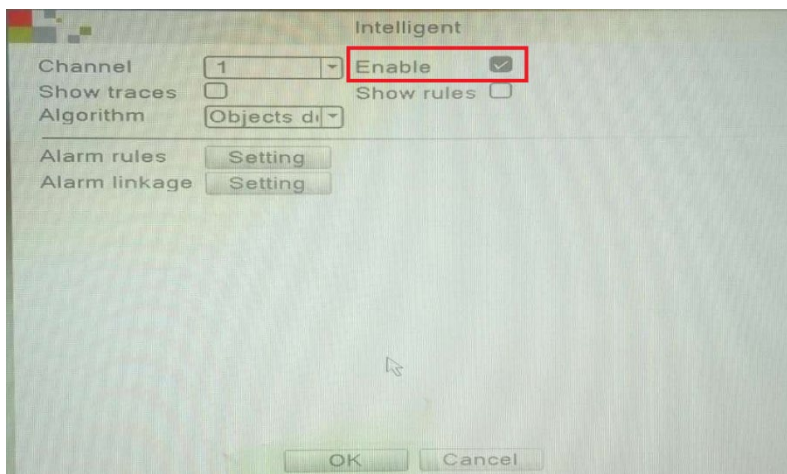


To activate Smart functions, you must:

1. Choose a channel



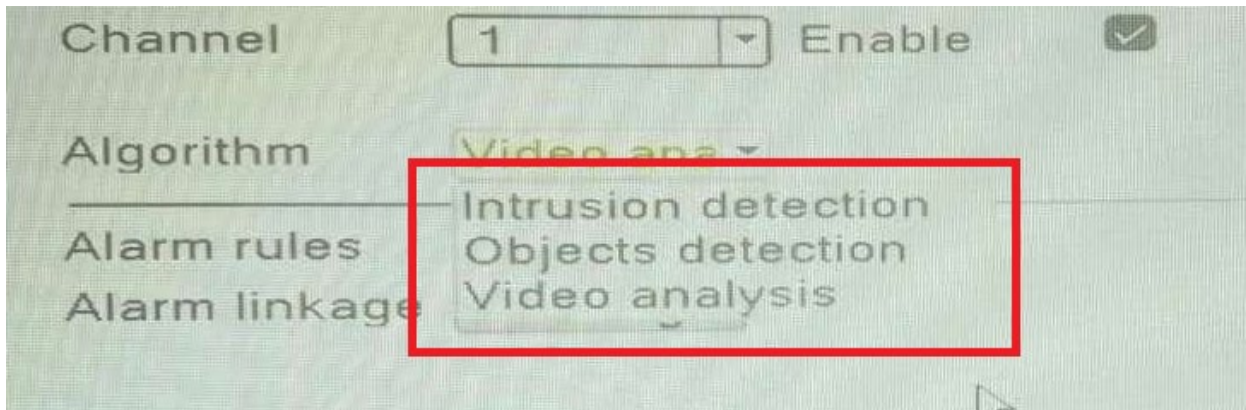
2. Check the box «Enable»



3. If desired you can enable the display of the object traces (Show traces) and the specified rule of work (Show rules)

4. Choose a work algorithm

The following algorithms are available:



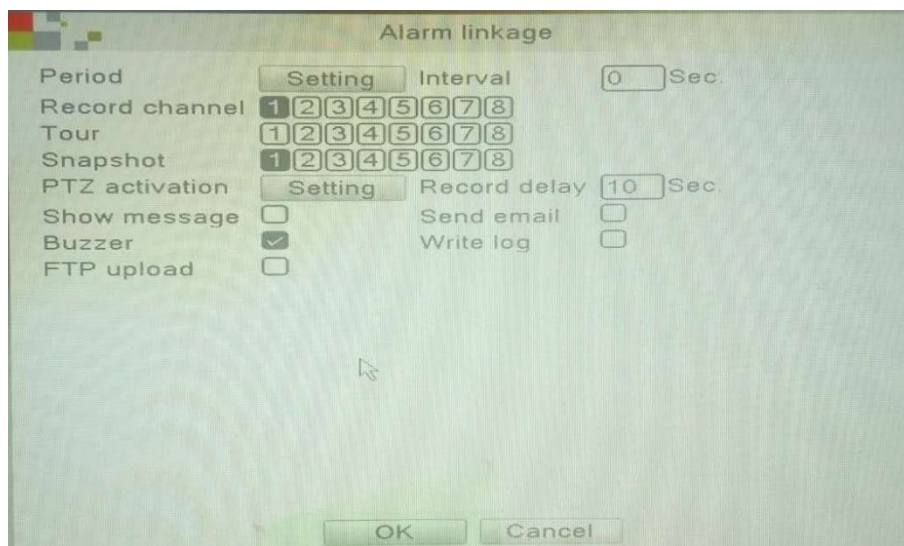
Intrusion detection – Crossing of a line or selected area

Objects detection – Objects detection

Video analysis – Intellectual video analysis

5. Set the necessary rule for the algorithm In the “Alarm rules” tab

6. Set the necessary actions for the algorithm In the “Alarm linkage” tab



Period – selection of the algorithm validity period

Record channel – selection of the recording channel during the algorithm work

Tour – tour activation

Snapshot – snapshot activation

PTZ activation – activations of pan-tilt-zoom robotic CCTV camera

Show message – display a message on the screen

Buzzer – enable an alarm sound

FTP upload – upload a file to an FTP server

Send email – email notifications

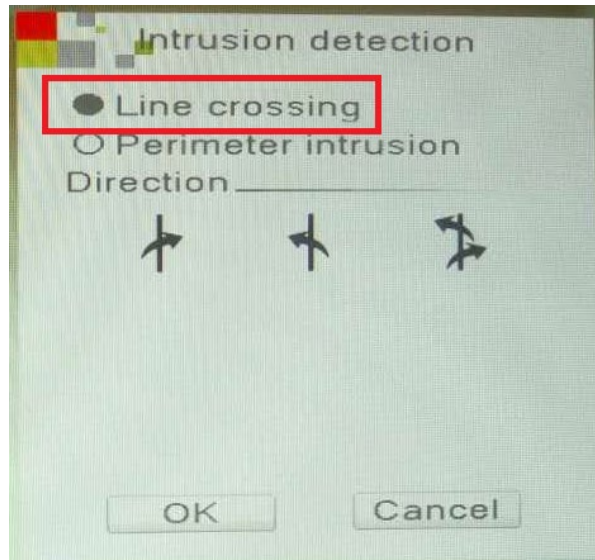
Write log – write an event to a log file

Algorithms Description

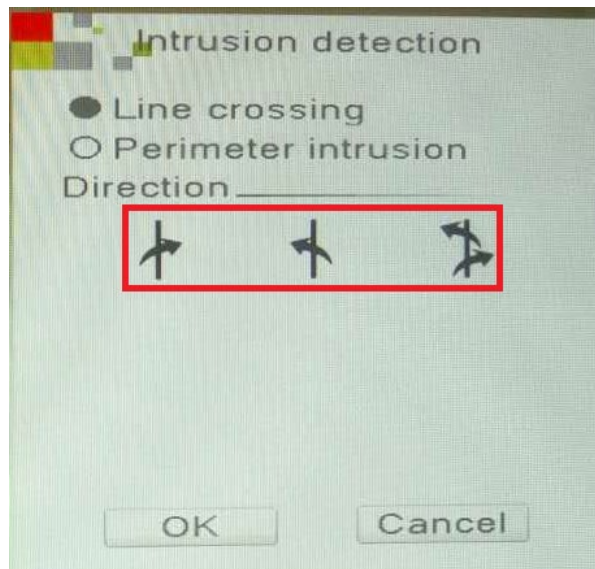
1. Intrusion Detection

1.1. Line crossing

For "Line Crossing" activation you need to check "Line Crossing" box



Then choose the rule of alarm triggering.



- line crossing from
left to right

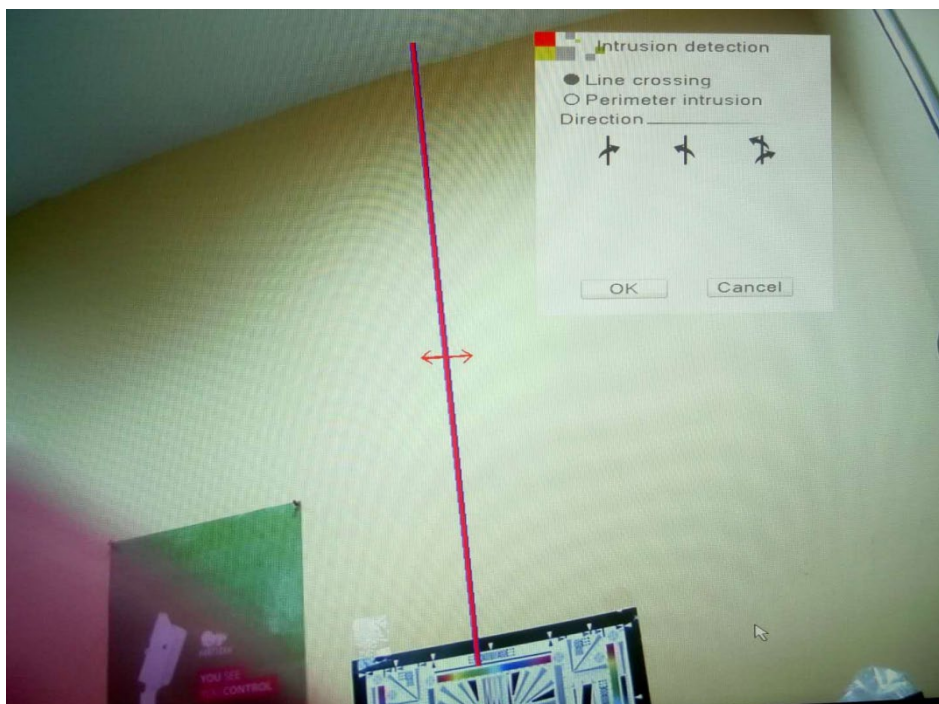


- line crossing from
right to left



- double-sided line
crossing

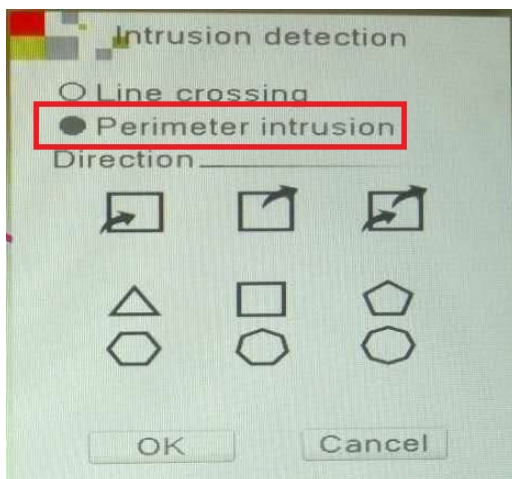
Set a conditional crossing line on the screen using the mouse.



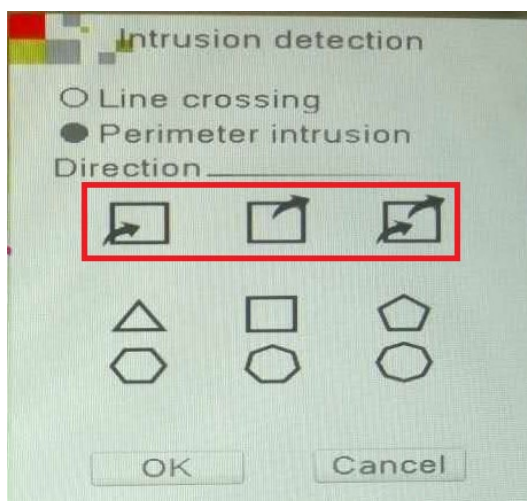
To complete settings click "OK" to save the rule.

1.2. Perimeter intrusion

For " Perimeter Intrusion " activation you need to check " Perimeter Intrusion" box



Then choose the rule of alarm triggering.



- entering into the
area alarm

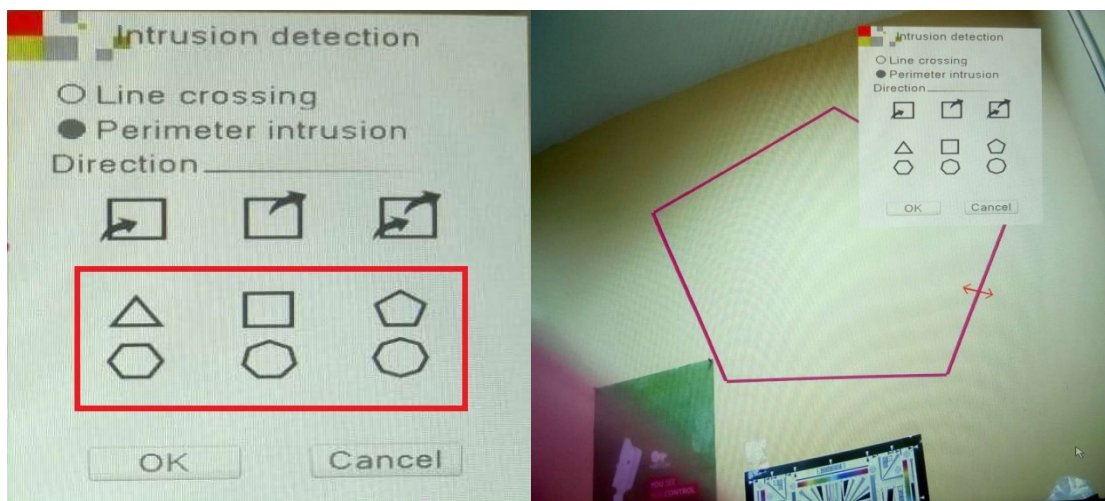


- leaving the area
alarm



- entering and leaving
the area alarm

Then select the area type (6 options are available) and apply it to the camera image.

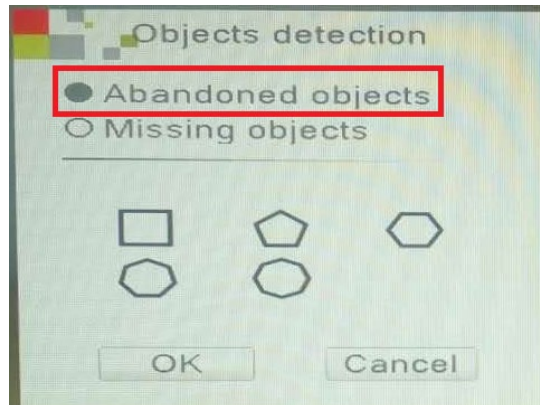


To complete settings click "OK" to save the rule.

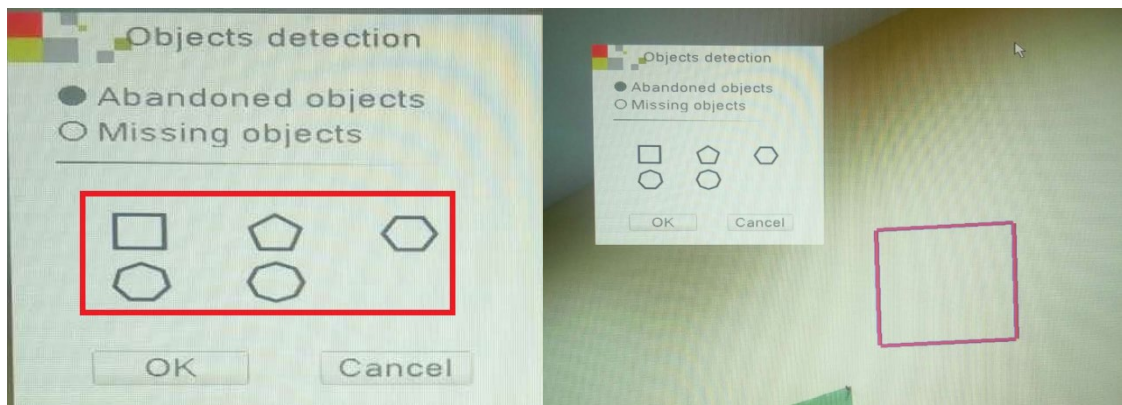
2. Objects detection

2.1. Abandoned object

For "Abandoned object " detection you need to check "Abandoned object " box



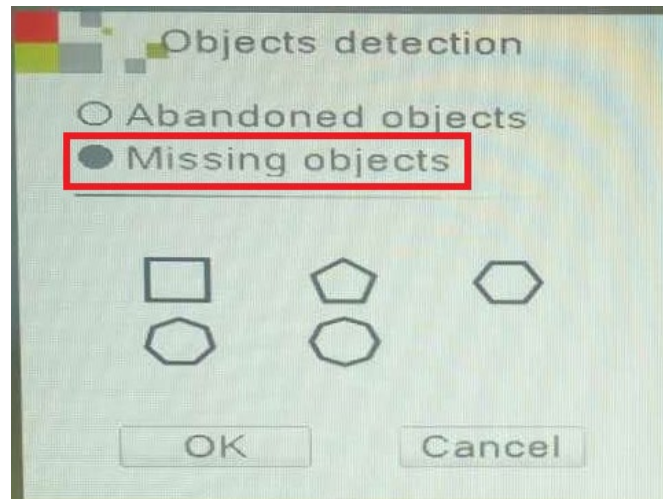
Then select the area type (5 options are available) and apply it to the camera image.



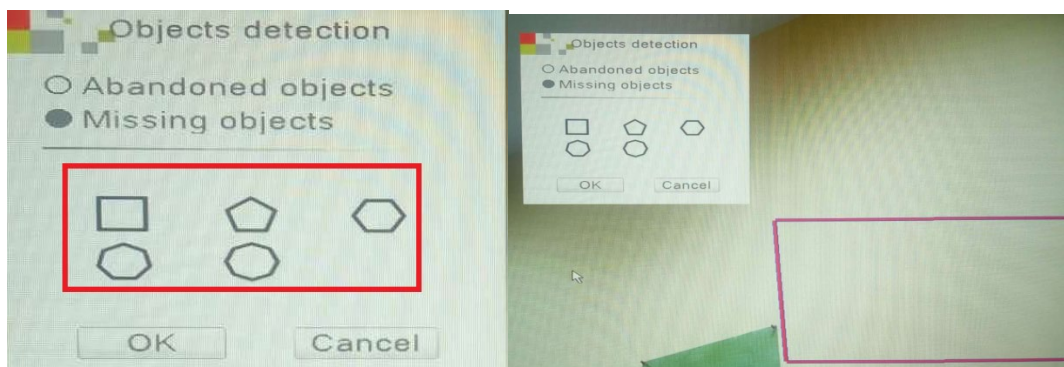
To complete settings click "OK" to save the rule.

2.2. Missing object

For "Missing object " detection you need to check "Missing object " box



Then select the area type (5 options are available) and apply it to the camera image.

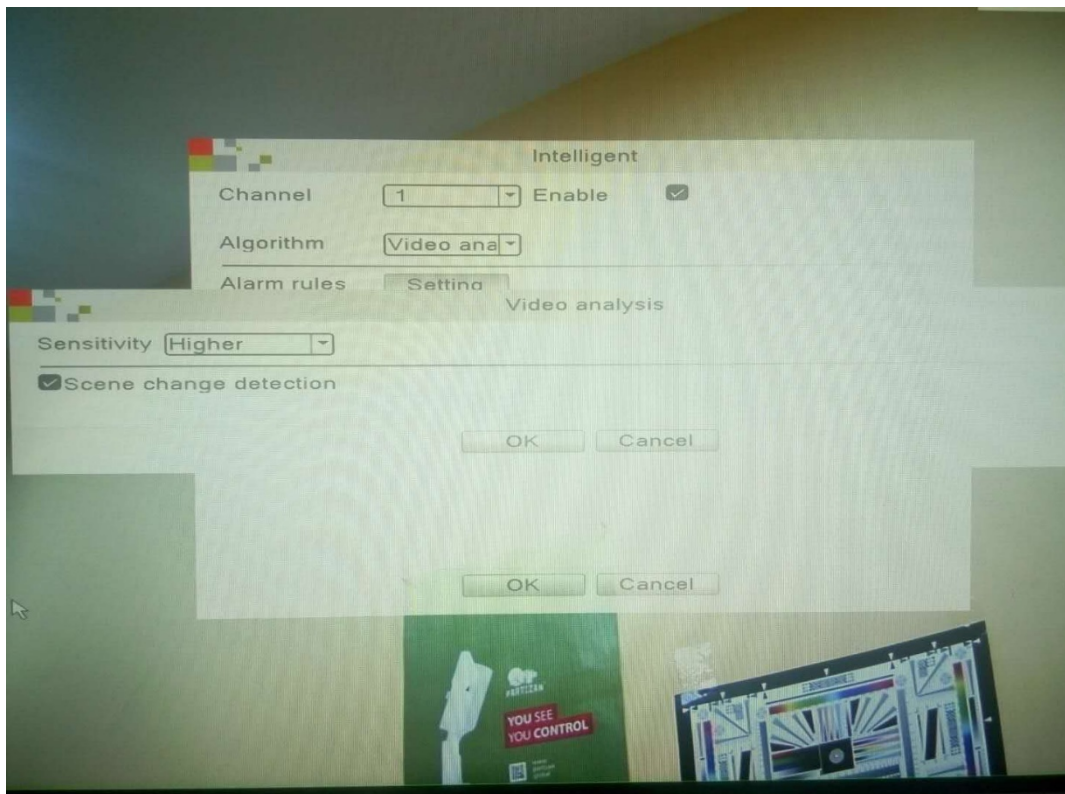


To complete settings click "OK" to save the rule.

3. Video analysis

Intellectual video analysis reacts to changes in front of CCTV camera lens.

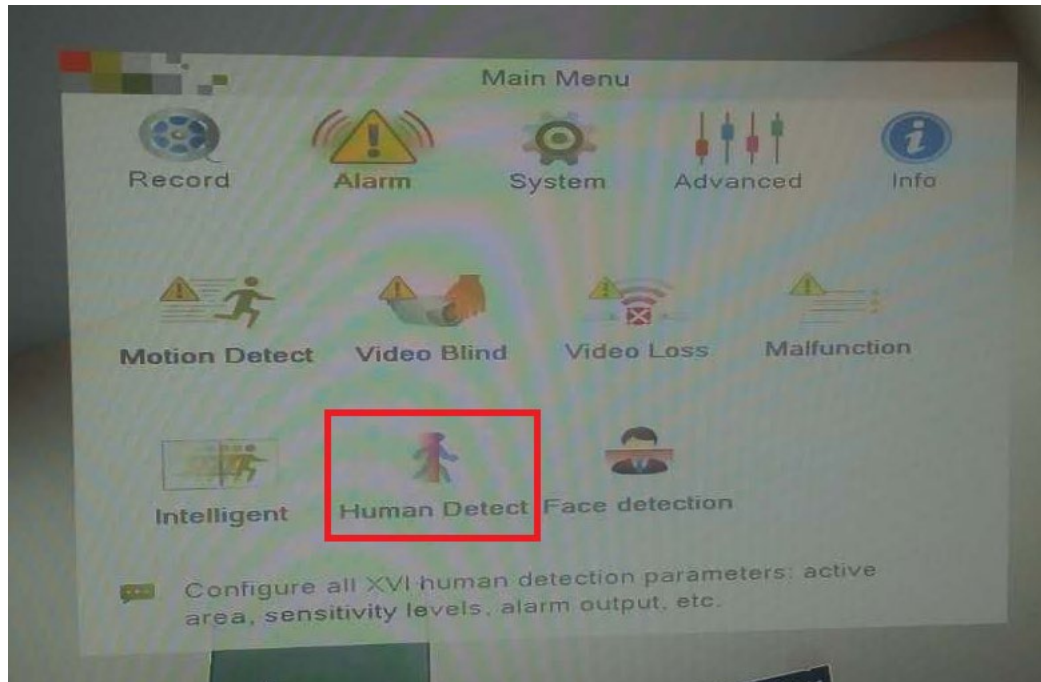
Change of sensitivity to scene changes is available in settings.



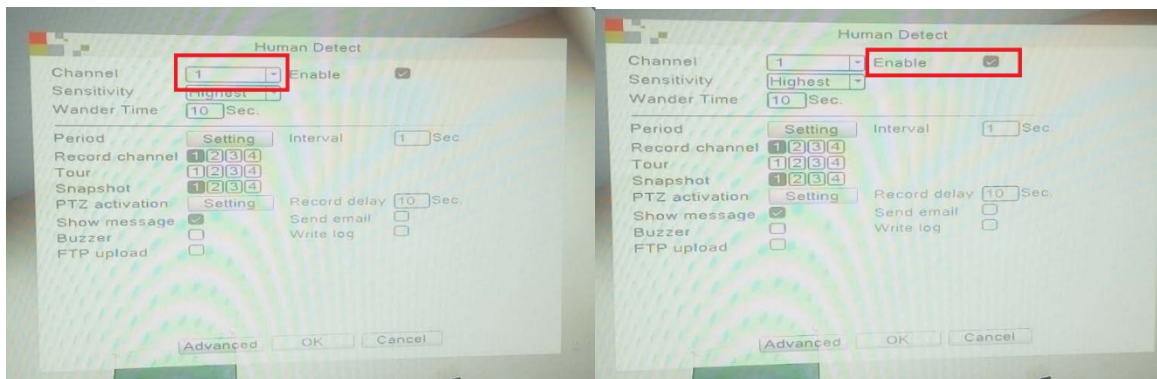
4. Enabling Human Detection Algorithm

This algorithm allows, based on the intellectual analysis, to detect the presence of a person in the frame and to take appropriate actions.

To enable "Human Detection" algorithm - go to the tab "Main menu" => "Alarm" => "Human Detect"



There you must select the channel and enable the algorithm



Then you need to set the action settings when running this algorithm

Sensitivity

Wander time – time spent in the frame

Period – rule validity period

Record channel – active recording channel

Tour – tour activation

Snapshot – snapshot activation

PTZ activation – activations of pan-tilt-zoom robotic CCTV camera

Show message – display a message on the screen

Buzzer – enable an alarm sound

FTP upload – upload a file to an FTP server

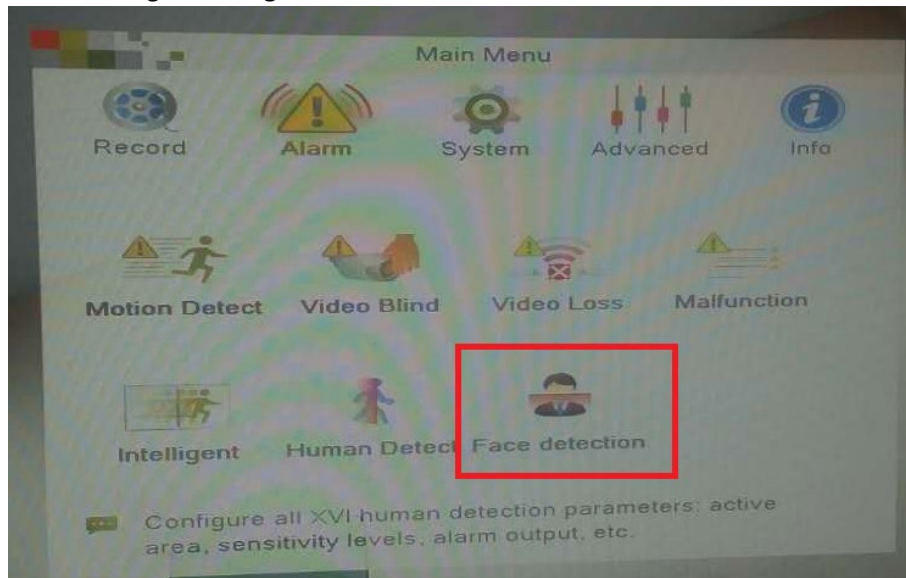
Send email – email notifications

Write log – write an event to a log file

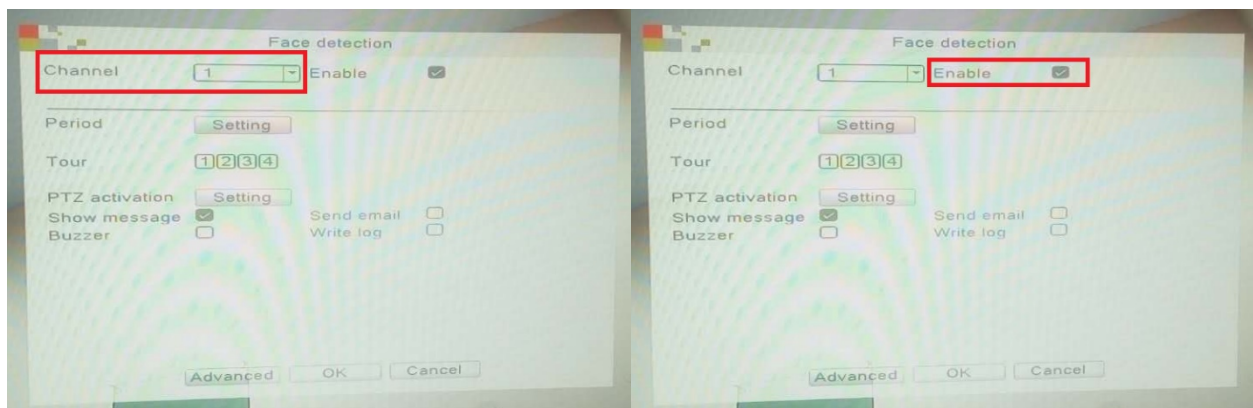
5. Enable Face Detection Algorithm

This algorithm allows, based on intellectual analysis, to detect the presence of a human face in the frame, and to add it to the database for further work.

To enable "Face Detection" algorithm - go to the tab "Main menu" => "Alarm" => "Face Detection"



There you must select the channel and enable the algorithm



Then you need to set the action settings when running this algorithm

Period – rule validity period

Tour – tour activation

PTZ activation – activations of pan-tilt-zoom robotic CCTV camera

Show message – display a message on the screen

Buzzer – enable an alarm sound

Send email – email notifications

Write log – write an event to a log file