



| User Manual Partizan CMS

Chapter 1 Installation Instructions	3
Chapter 2 Basic Operations	7
Chapter 3 Screen.....	9
Chapter 4 System.....	11
Chapter 5 Users management	28
Chapter 6 Local Log.....	29
Chapter 7 Recording	30
Chapter 8 Advanced.....	32

Chapter 1 Installation instructions

1.1 Requirements for running CMS on Computer

1.1.1 Hardware Requirements.

- Processor: Intel Pentium IV 2.0 GHz or higher.
- Memory: 1.5 GB
- Video card: ATI 9800 or higher, with at least 256 MB of memory
- Network card: 100/1000 MB / sec.
- Free space on hard disk 100 MB

1.1.2 Software requirements.

CMS of this version can run on Windows XP, Windows 7, and Windows 8. Please close all anti-virus programs and disable firewall, after that you can install the program correctly; otherwise it may not be able to add a DVR.

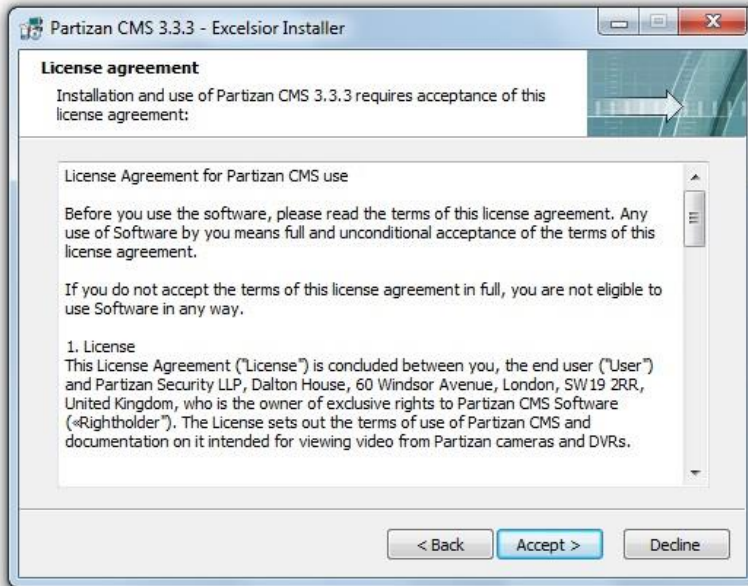
1.2 Installation.

1.2.1 Locate "Partizan CMS 3.3.3" on installation CD or download from our website www.partizan-cctv.com and run installation file.

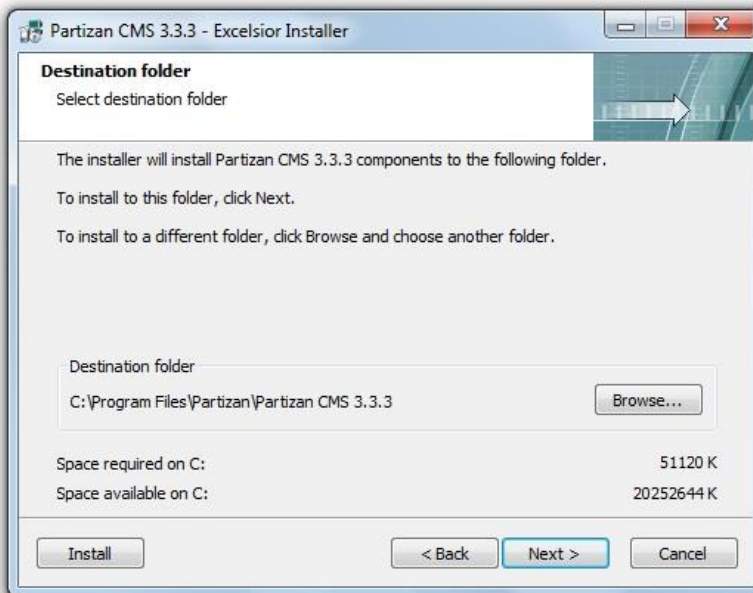
1.2.2 Click "Next", as shown in the picture below.



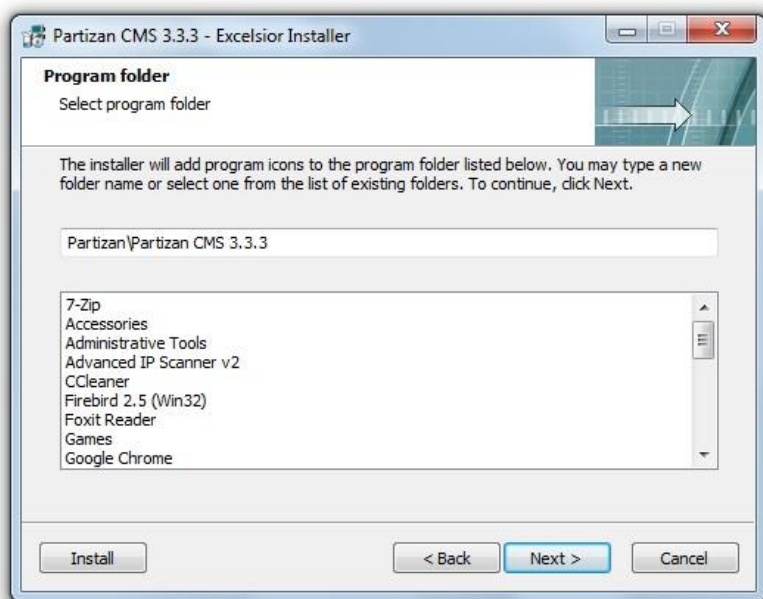
1.2.3 Click "Accept" to accept the license agreement and continue the installation.



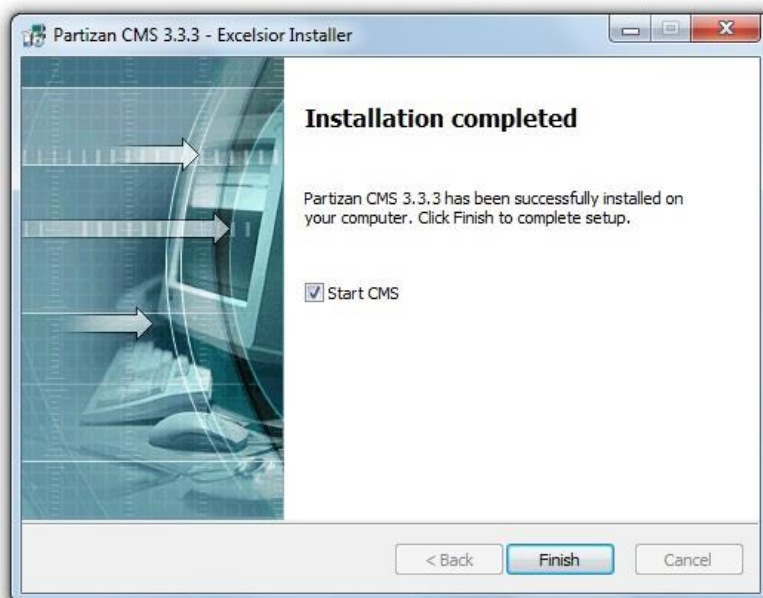
1.2.6 Select the Destination folder you want to install the programme in and click "Next"



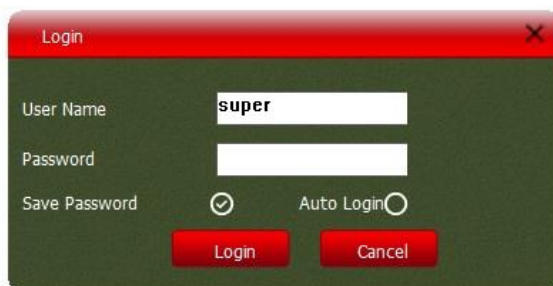
1.2.7 Click "Install"



1.2.8 To complete CMS installation click "Finish".



Start Partizan CMS from the desktop, Start Menu or folder in which you installed it.

A screenshot of a login window titled "Login" with a red header bar. The window has a dark green background. It contains two text input fields: "User Name" with the text "super" entered, and "Password" which is empty. Below the password field are two checkboxes: "Save Password" which is checked, and "Auto Login" which is unchecked. At the bottom of the window are two red buttons labeled "Login" and "Cancel".

By default, user name is "super", but there is no password. You can choose "save password" and "automatic login" when the program starts.

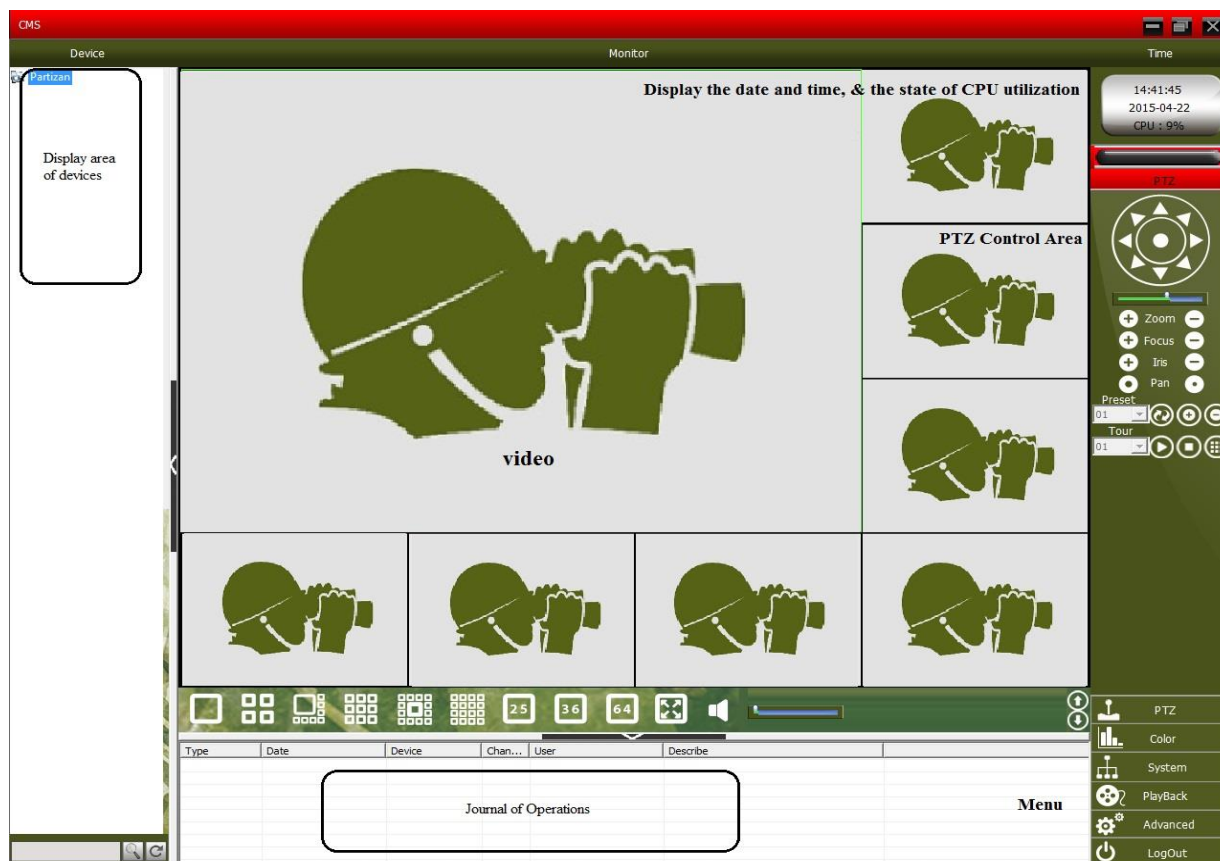
After the download is complete, the main menu will be displayed.



Chapter 2 Basic Operations

2.1 CMS Main Menu

Double-click the device name to connect, and then click again to select the video.



2.1.1 Display Devices: In this area you can see available devices and administrator settings, click on the device name or channel to change real-time preview.

2.1.2 Video: You can view video devices in real time.

2.1.3 Date and time, CPU utilization.

2.1.4 PTZ

2.1.5 Operations Log: Activity Log where alarms, generated operations, system information will be displayed.

2.1.6 Menu: Access to programme menus and submenus.

Table 1. Menu

№	Main-menu	First sub-menu	Second sub-menu	Functions & description	Permissions
1	PTZ			Control cameras up, down, left, right, stop with the Panel. Speed control, zoom, focus, IRIS, presets and tours.	Admin/Users
2	Colour			Adjust video screen brightness, contrast, saturation and shade	Admin/Users
3	system	Device Manager	Add area	Add zone for all devices	Admin/Users
4			Add device	Add a device for watching videos.	Admin/Users
5			Modify	Change the device name, IP address, user name, or password.	Admin/Users
6			Delete	Remove the device from the list.	Admin/Users
7			Devices imp.	Import device configuration	Admin/Users
8			Devices exp.	Export device configuration	Admin/Users
9			Connection test	Test the connection with the device	Admin/Users
10		Local Config	Base Config	Select your language, disk drives, and a list of Maintenance log.	Admin/Users
11			Alarm setting	Setting the alarm	Admin/Users
12			Record plan	Setting up a template record	Admin/Users
13			DDNS Config	Selecting the port and server for DDNS	Admin/Users
14			Version info	Information about the product	Admin/Users
15		Device Config	Guide & device	Configure connected devices	Admin/Users
16		Users management	Group	Add and remove users, groups, distribution rights.	Admin/Users
17			User	Add, delete, and manage users, customize the display of user names, passwords, and access rights to the menu.	Admin/Users
18		Local log		View alarm log and performed operations.	Admin/Users
19	Playback		Play back	Search and play back recorded files.	Admin/Users
20	Advanced	Decoder		Set the DVR and decode.	Admin/Users
21		Map		Use the map to display each camera on the territory of the organization, and search currently displayed screen	Admin/Users
22		Tour		Specify channel display mode and time interval	Admin/Users
23		Template conf.	Template Plan	List of templates	Admin/Users
24			Template Node	Information about template configuration	Admin/Users

User configurable option rights

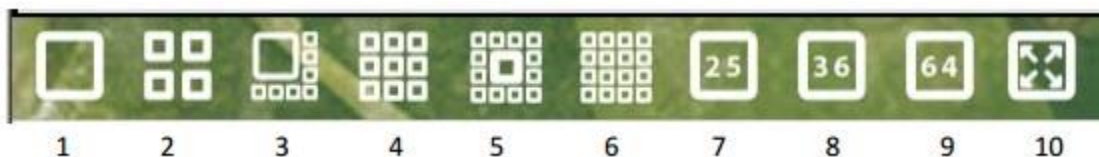
Chapter 3 Screen

Click this menu to change the display options.

Menu options: View, PTZ, and video settings.

3.1 Viewing

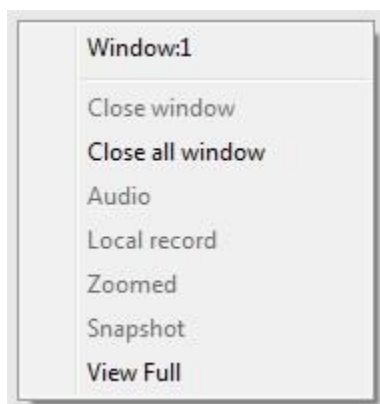
Table 2 Description of playback menu possibilities.



№ icons	value
1	Click to display a single channel.
2	Click to display four channels.
3	Click to display eight channels.
4	Click to display nine channels.
5	Click to display thirteen channels.
6	Click to display sixteen channels.
7	Click to display twenty-five channels.
8	Click to display thirty-six channels
9	Click to display sixty-four channel.
10	Click to activate the full-screen mode.

3.2 Right-click menu

In the area in use, the user can bring up a context menu by clicking the right mouse button:






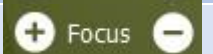

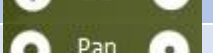




- Close window: Closes the current channel.
- Close all windows: closes all channels.
- Audio: enables audio on the current channel.
- Local recording: records the current channel to the configured disk.
- Snapshot: Saves the screenshot to the specified disk.
- Zoom: Digital Zoom.
- Full screen: activates full-screen display.





3.3 PTZ

When speed dome cameras are connected to the DVR, the user can manage them through this menu to turn up, down, left & right, to stop the playback, adjust the speed, to zoom the image, to change the focus and IRIS, to change presets and "Tours". When the user activates the "Tour", the camera will start pre-programmed "Tour".

Features:

N	icon	value
1		 means "playback"  means "stop playback"
2		Drag the slider to change playback speed.
3		Click «+» to zoom in. Click «-» to zoom out.
4		Click «+» to zoom in focus. Click «-» to zoom out focus.
5		Click «+» to adjust iris. Click «-» to reverse adjustment.
6		Panorama setting display.
7		Select the preset, specify points, PTZ will automatically follow them, add, remove and adjust the preset.
8		Multiple presets combine points in "tours", specify the sequence of the points so that PTZ follow them.

3.4 Color


N	icon	value
1		brightness
2		contrast
3		saturation
4		shade



Note: Click  to restore the default values.

Chapter 4 System

4.1 Devices

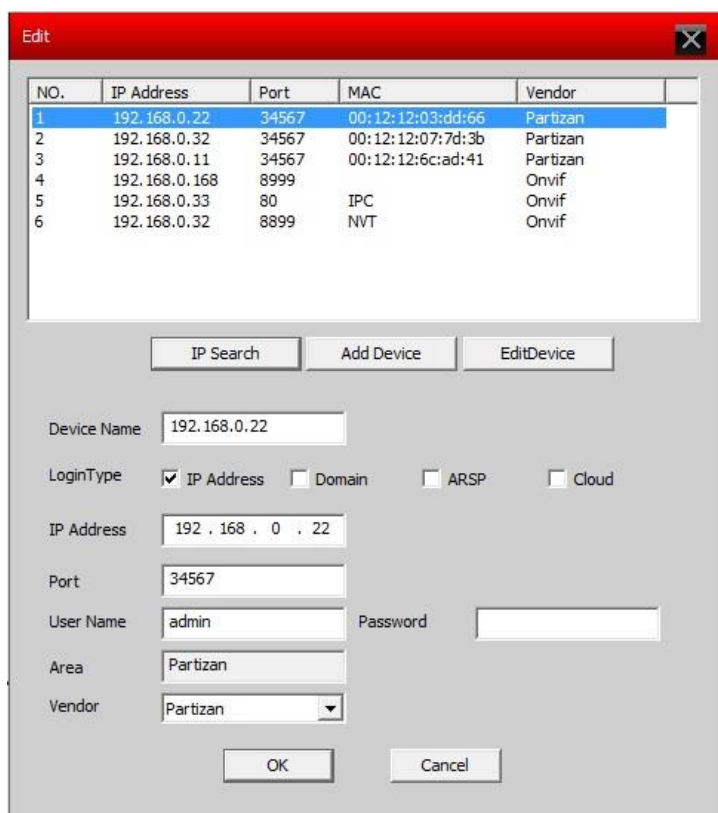
4.1.1 Press  to add a field, as shown below:



The dialog box titled "Area" has a red header bar with a close button (X) on the right. It contains two input fields: "Area" and "Up Area". Below the input fields are two buttons: "OK" and "Cancel".



4.1.2 Click to add a device:



NO.	IP Address	Port	MAC	Vendor
1	192.168.0.22	34567	00:12:12:03:dd:66	Partizan
2	192.168.0.32	34567	00:12:12:07:7d:3b	Partizan
3	192.168.0.11	34567	00:12:12:6c:ad:41	Partizan
4	192.168.0.168	8999		Onvif
5	192.168.0.33	80	IPC	Onvif
6	192.168.0.32	8899	NVT	Onvif

IP Search Add Device EditDevice

Device Name: 192.168.0.22

LoginType: ☒ IP Address ☐ Domain ☐ ARSP ☐ Cloud

IP Address: 192.168.0.22

Port: 34567

User Name: admin Password:

Area: Partizan

Vendor: Partizan

OK Cancel


- IP Search: Press to automatically find the device in the network.
- Edit: Click to edit the device information.
- Device Name: Enter the device name at your discretion.
- Type of connection: IP Address, Domain, ARSP, Cloud.
- Area: the domain name in the external network, for example, xxx.3332.org; xxx.dyndns.org etc...
- IP Address: IP Address
- Port: TCP port
- User Name: User Name, in DVR or (IP camera).
- Password: Password in DVR or (IP cameras).

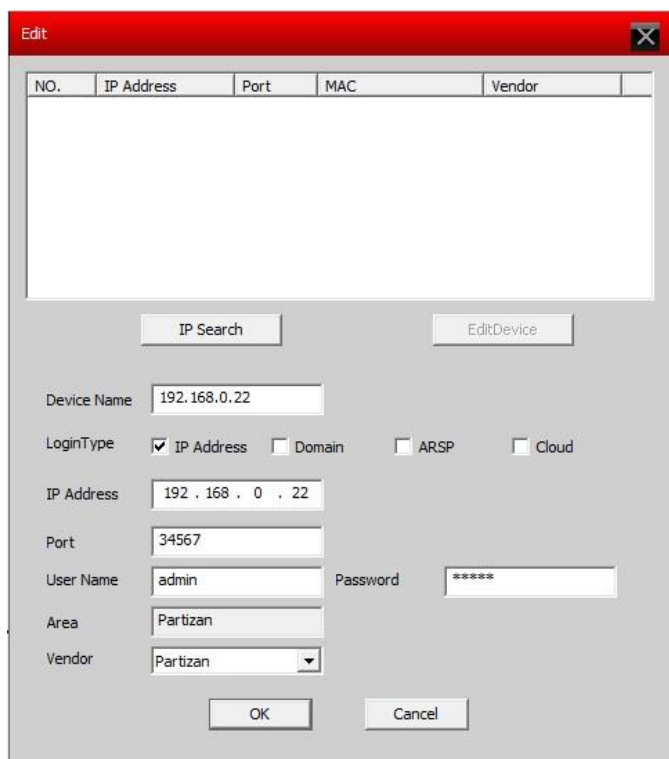
Click "OK" after filling out all the parameters, the device will appear on the device list as in the picture below, you can open the device by clicking on it twice.



Note: Select only one domain or IP-address.



4.1.3 Click on the  icon to change technical settings, see the image below:



After completing all the changes, click "OK"

4.1.4 Remove Devices: Select the device you want to delete, then press:



Note: Please make sure your device is turned off before you make changes or remove the device.

4.1.5 Export devices: Select the device you want to export, and then click:



4.1.6 Importing devices: Select the device you want to import, and then click:

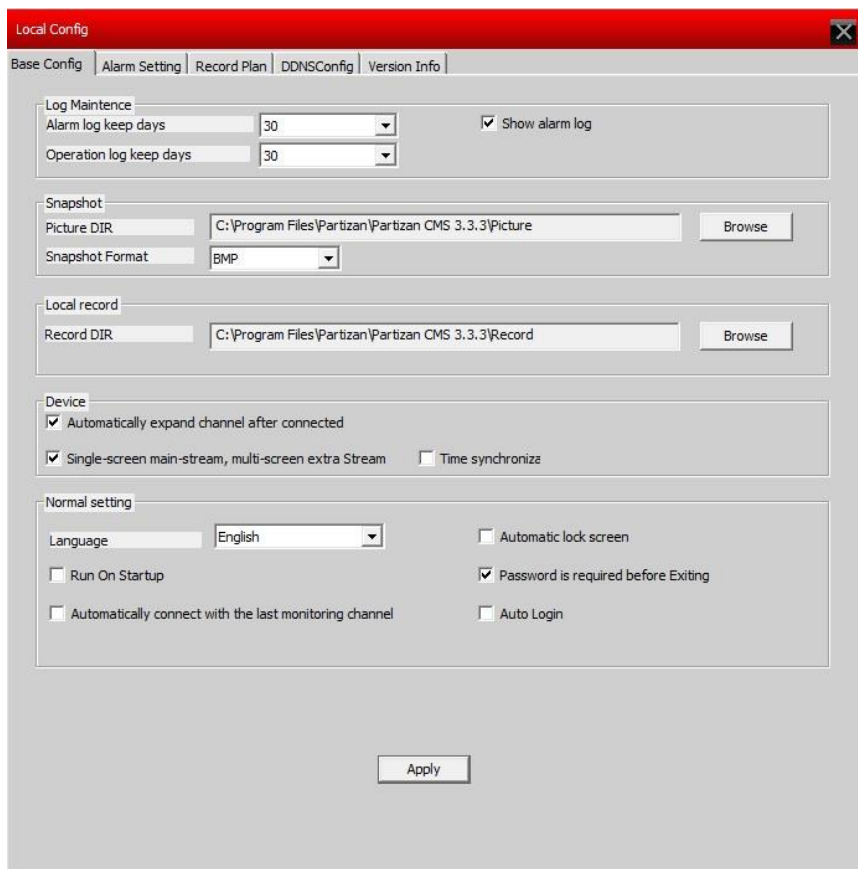


4.1.7 Connection Test: Select the device which you want to verify, and then click:



5.2 Local Config

5.2.1 Base Config: See the picture below:



The screenshot shows the 'Local Config' window with the 'Base Config' tab selected. The settings are organized into several sections:

- Log Maintenance:** Includes 'Alarm log keep days' (set to 30) and 'Operation log keep days' (set to 30). A checkbox for 'Show alarm log' is checked.
- Snapshot:** Includes 'Picture DIR' (set to 'C:\Program Files\Partizan\Partizan CMS 3.3.3\Picture') and 'Snapshot Format' (set to 'BMP'). A 'Browse' button is next to the directory field.
- Local record:** Includes 'Record DIR' (set to 'C:\Program Files\Partizan\Partizan CMS 3.3.3\Record'). A 'Browse' button is next to the directory field.
- Device:** Includes checkboxes for 'Automatically expand channel after connected' (checked), 'Single-screen main-stream, multi-screen extra Stream' (checked), and 'Time synchronize' (unchecked).
- Normal setting:** Includes 'Language' (set to 'English'), 'Automatic lock screen' (unchecked), 'Run On Startup' (unchecked), 'Password is required before Exiting' (checked), 'Automatically connect with the last monitoring channel' (unchecked), and 'Auto Login' (unchecked).

An 'Apply' button is located at the bottom of the window.

- Log Maintenance: The duration of storage of alarm events, and system events
- Snapshot: folder to save images
- Local record: folder to save video

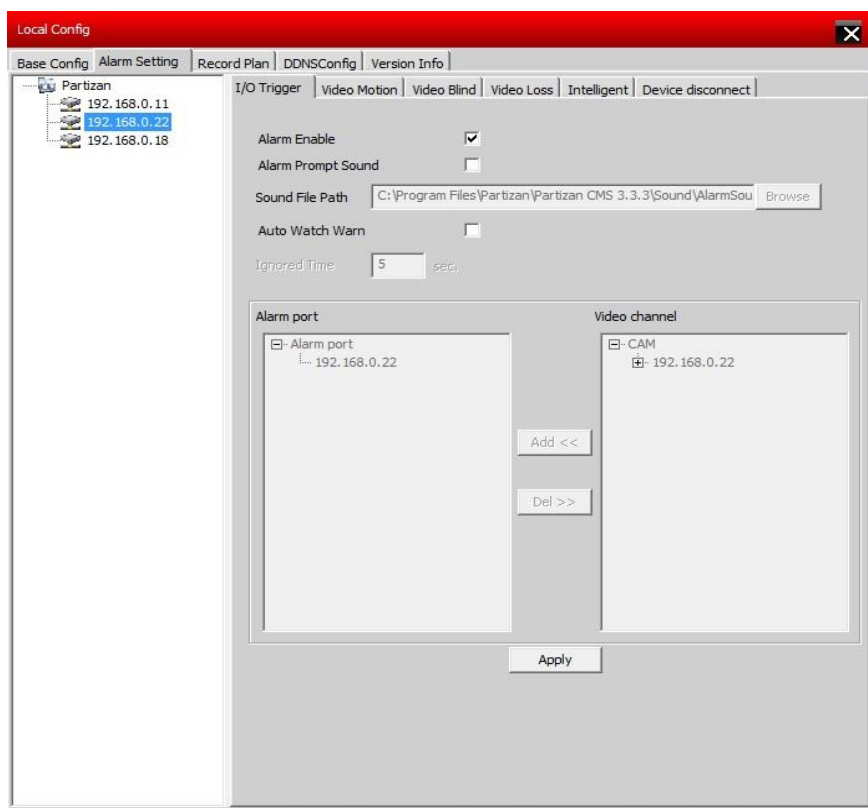
Device:

- Time Synchronization with PC: configures the device and the PC making time overall.
- The Auto Channel latter compound.
- One screen main screen, multi-screen additional stream: In quadmode channels will be displayed in additional stream, by selecting a channel in full screen, the channel will be displayed in the main stream.

Normal settings:

- Language: Select language for the CMS.
- Run On startup: CMS program will start after Windows loading.
- Automatic connects to the latest monitoring channel: on CMS start, the channels will be opened in the same sequences as before closing the program.
- Automatic lock screen: Locks programs in standby mode.
- Password is required to exit: To close the program, you have to enter user's password.
- Auto Login: automatic login.

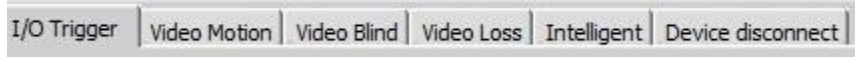
4.2.2 Alarm Setting



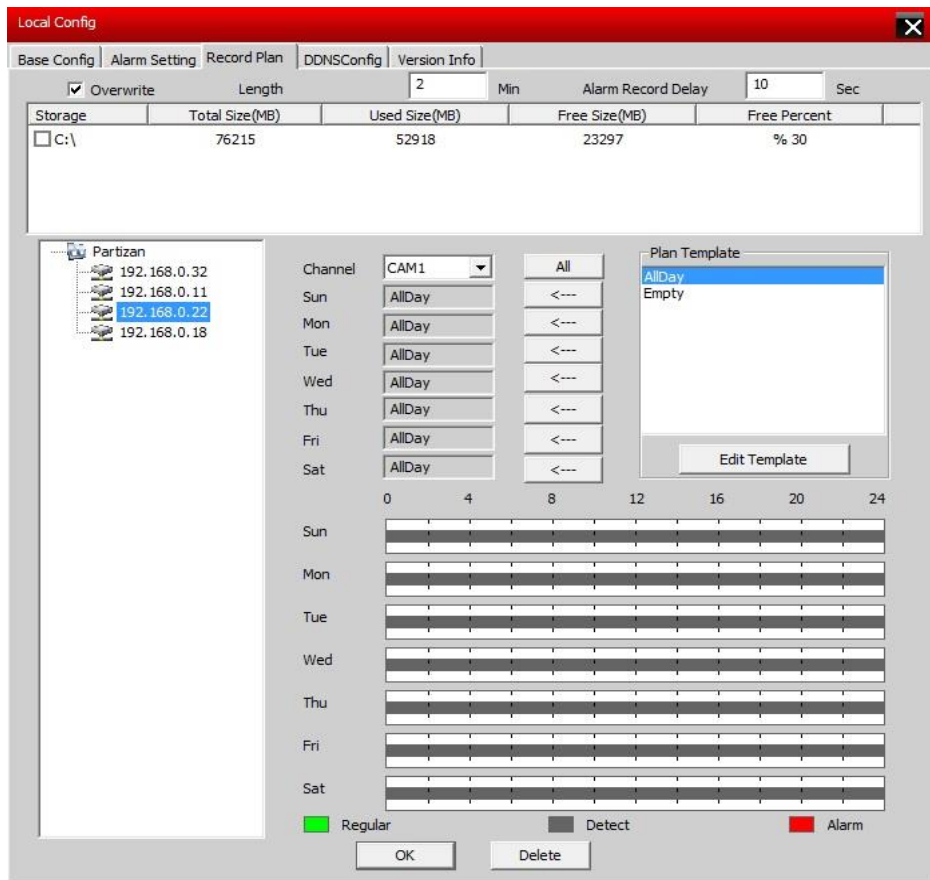
- Device List: select one device to configure alarms.
- Alarm Enable: select to turn the alarm function on.
- Alarm Prompt Sound: switches on sound at alert.
- Alarm file path: specify the path to the sound that is activated during the event.

- Auto watch warn: includes adding channels with alarm.

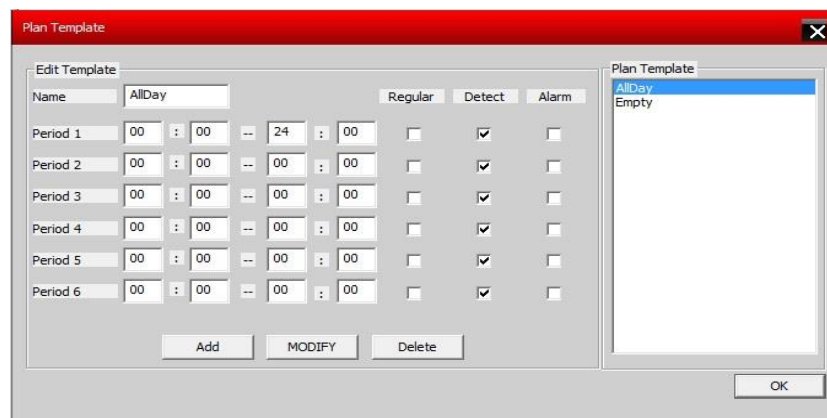
Note: Please select the type of alarm at the beginning:



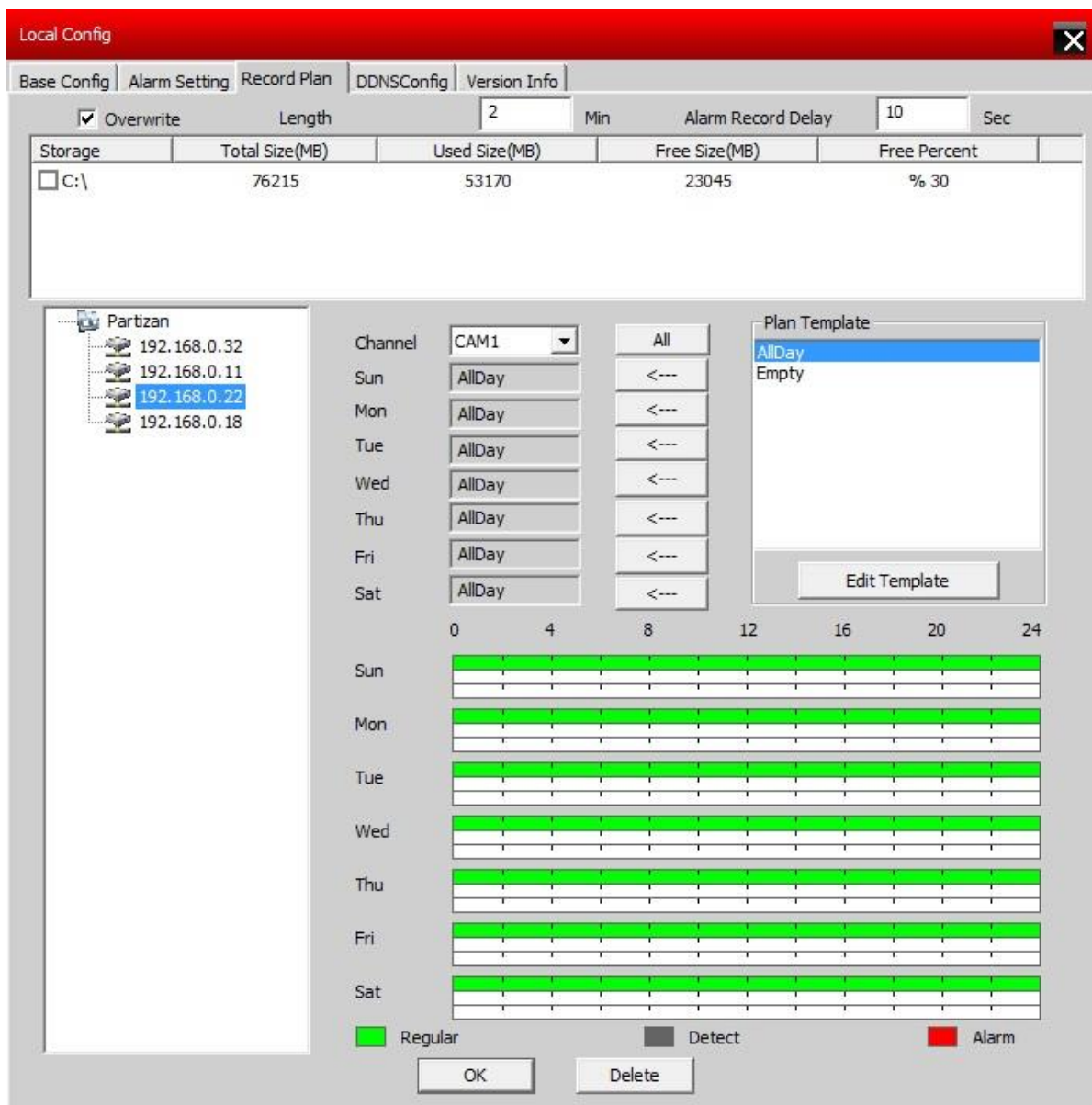
4.2.3 Record Plan: The ability to customize your schedule for all days and hours, as well as apparatus choice for recording, see picture below:



Edit the template, see the image below: After selecting the template name, click on "Add" and then "OK".



First select the channel, and then adjust the recording schedule for all days of the week from Monday to Sunday.



Local Config

Base Config | Alarm Setting | **Record Plan** | DDNSConfig | Version Info

☒ Overwrite Length: 2 Min Alarm Record Delay: 10 Sec

Storage	Total Size(MB)	Used Size(MB)	Free Size(MB)	Free Percent
<input type="checkbox"/> C:\	76215	53170	23045	% 30

Channel: CAM1

Sun: AllDay
Mon: AllDay
Tue: AllDay
Wed: AllDay
Thu: AllDay
Fri: AllDay
Sat: AllDay

Plan Template: AllDay, Empty

0 4 8 12 16 20 24

Sun
Mon
Tue
Wed
Thu
Fri
Sat

Regular Detect Alarm

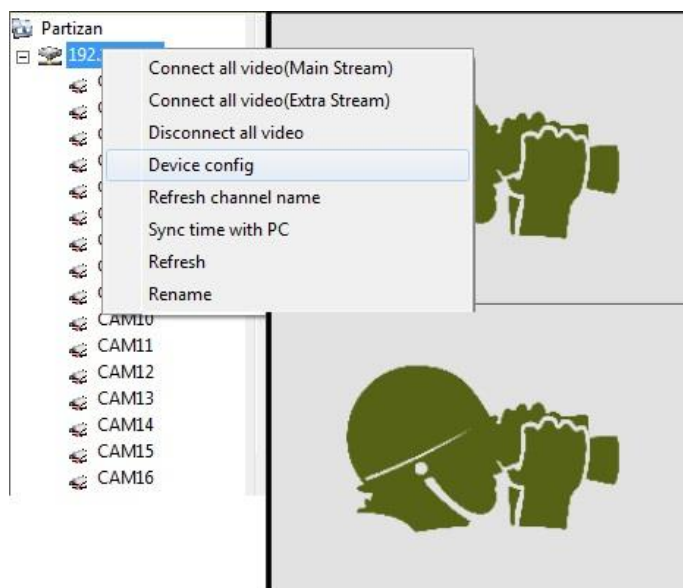
OK Delete

Note: after you create your schedule, to start recording, please, make sure that you have completed all the requirements:

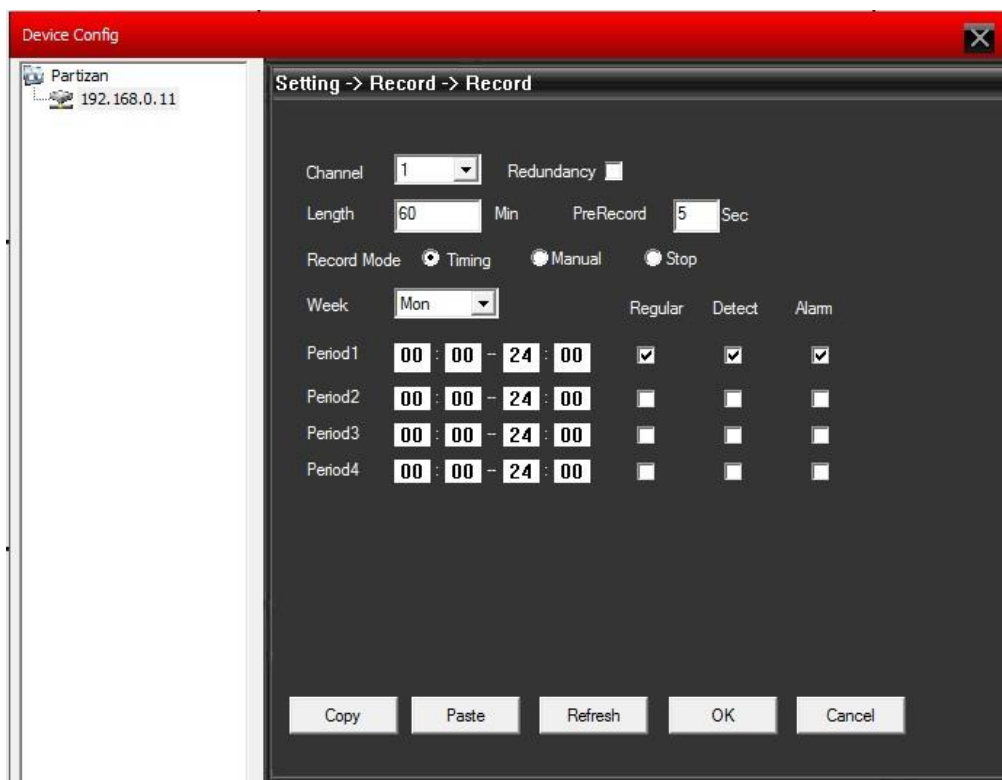
1. Select the drive for local recording.
2. The device is connected to the network and active.
3. PC is always on.

4.3 Remote configuration

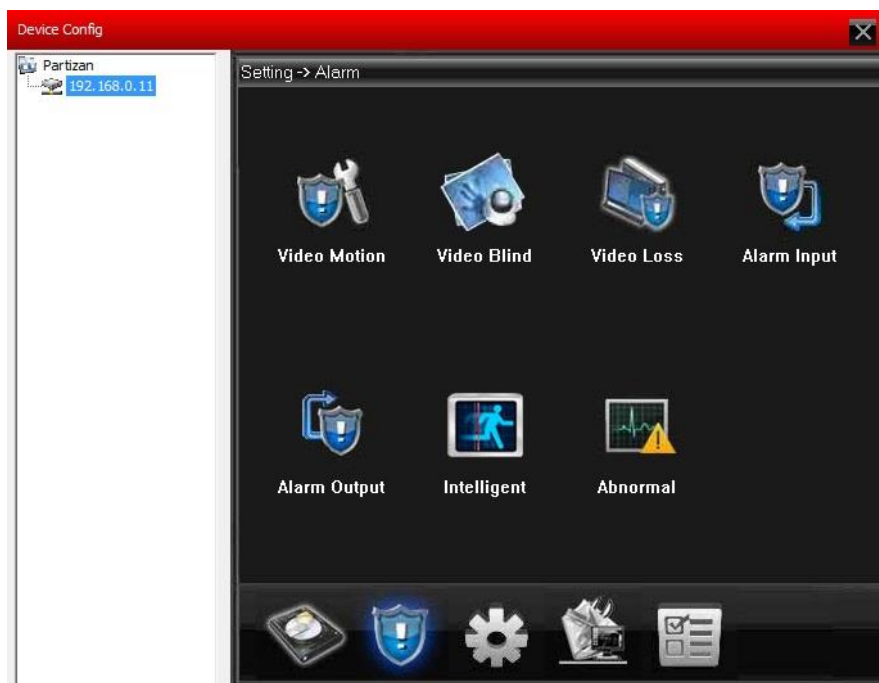
First select the device, click the right mouse button and select "Device Config": then you will have access to the settings, see the image below:



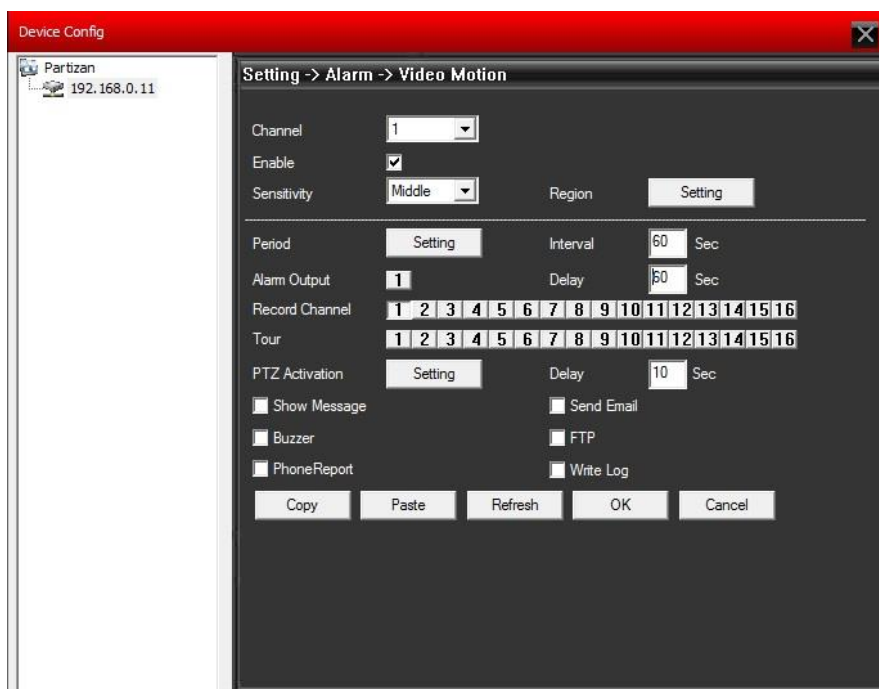
4.3.1. Recording: press the "record" – to get into the menu. Configure recording duration, period, style, and so on:



4.3.2 The alarm: Press "alarm" to enter the menu. Activates the configuration of alarms (movement, closed cells, loss of signal, alarming entry, error log), see picture below.

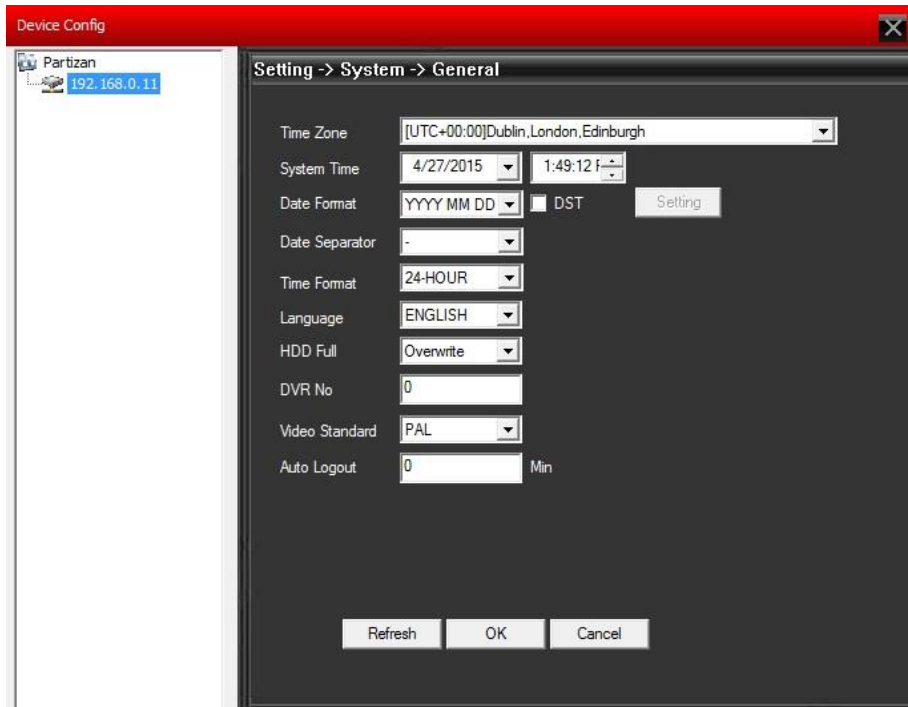


Motion: motion detection, depending on the preset it will automatically record, issue a message, a beep, send Email messages, record video to FTP. You can customize each channel separately.



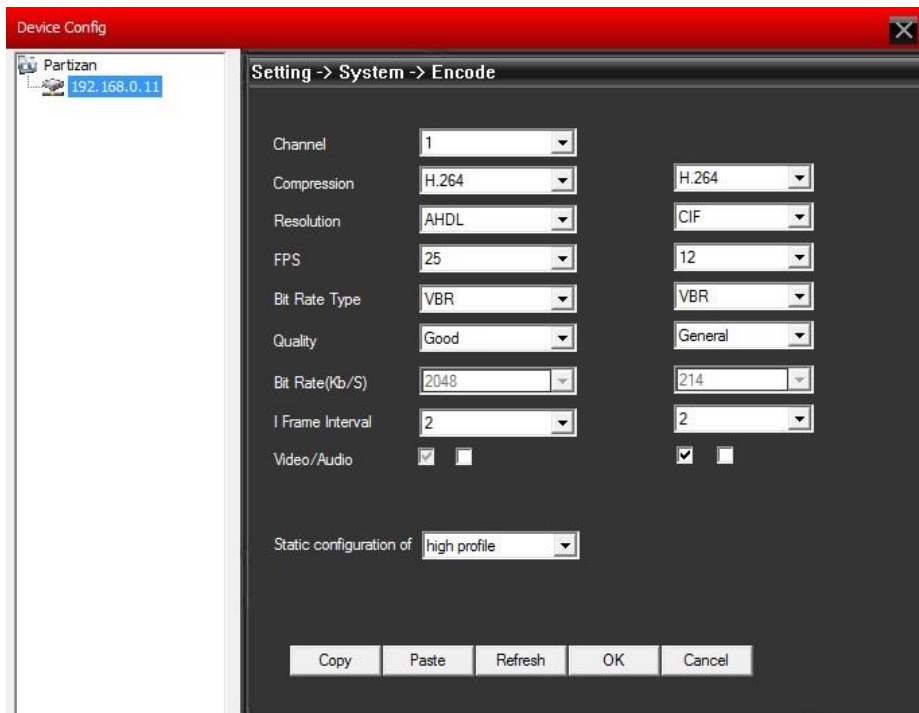
For The "Off" Position. Cameras, loss of signal, alarming. Enter the same settings.

4.3.3 System: Click System in order to get into the settings.



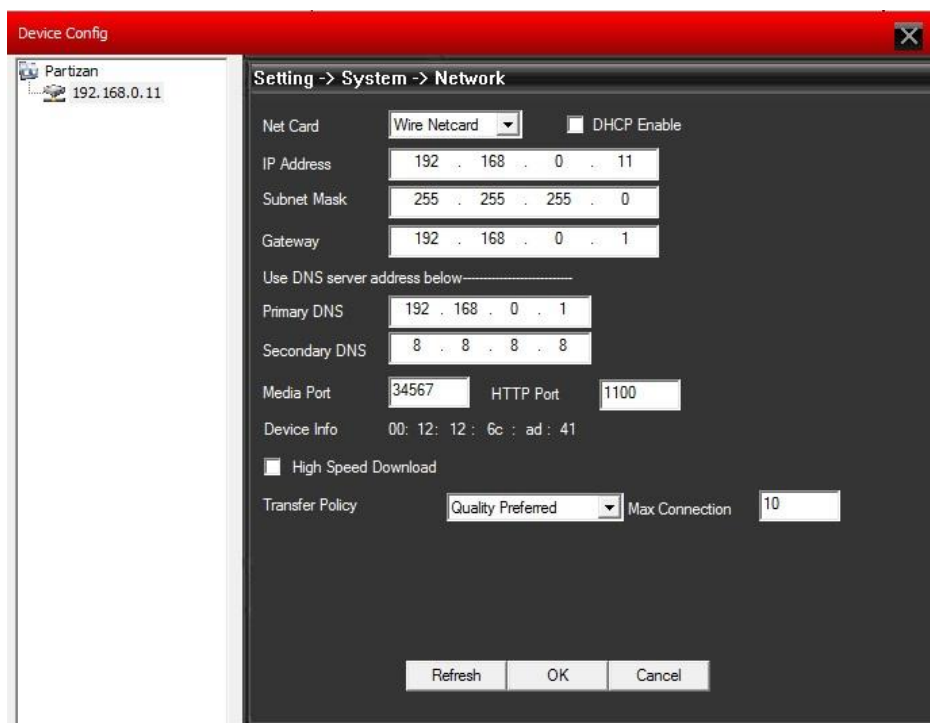
General: Set system time, Select language, standard video input, automatically exit system, etc... see picture below.

Encode: Set the resolution, FPS, quality video, etc... See the picture below.

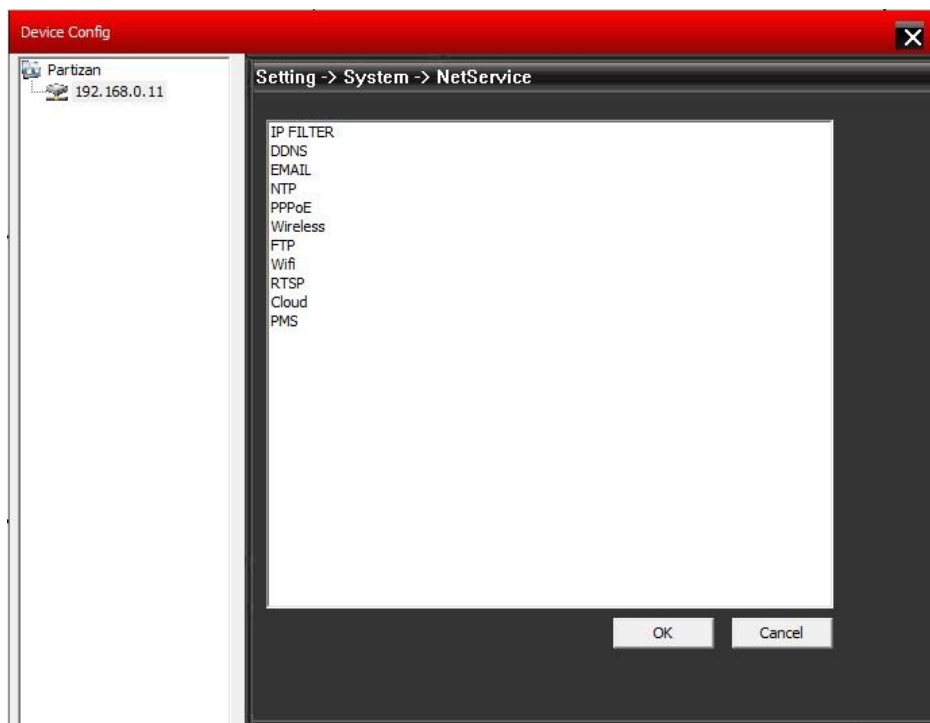


Networking: set IP addresses, ports, DNS, etc. ...

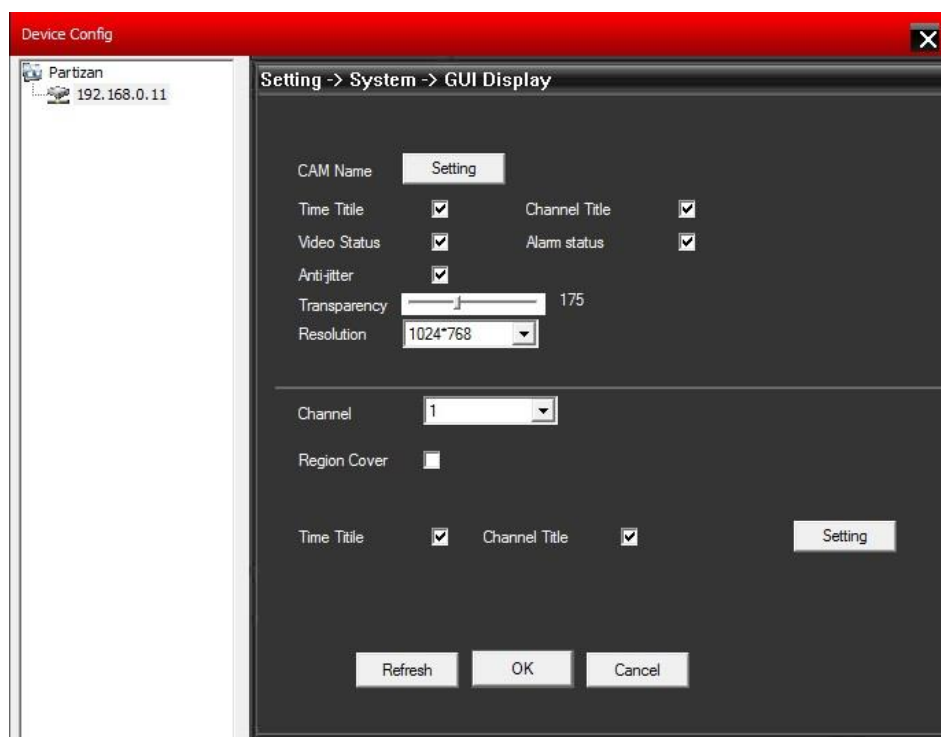
Rules for "mobile port" and "remote monitor" see in the menu, as shown in the picture below:



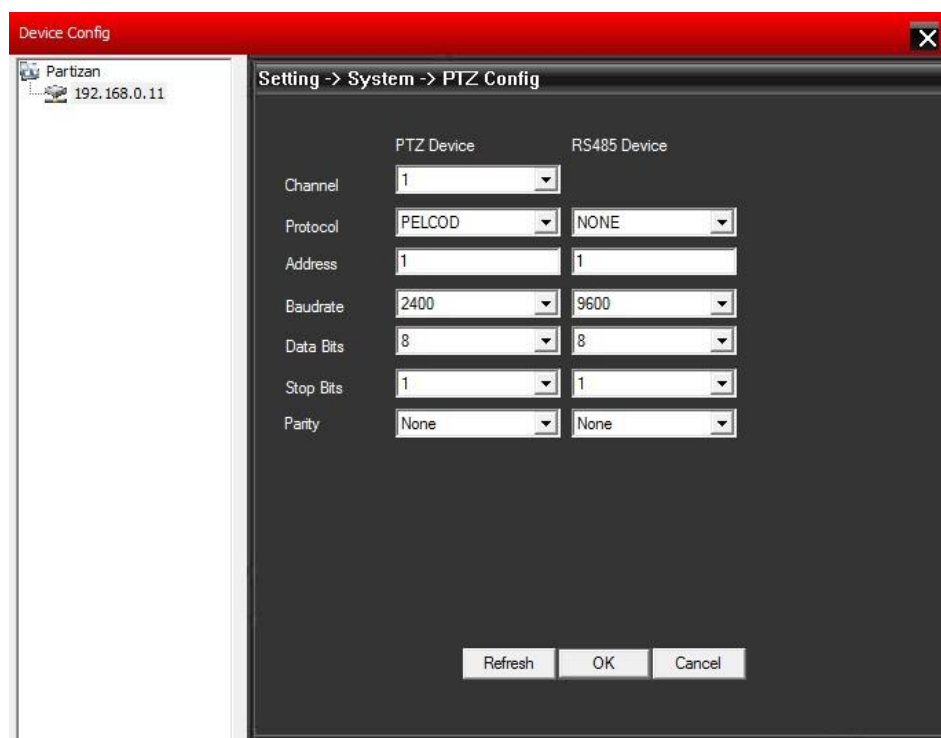
NetService: Set IP filtre, DDNS, E-mail, etc... See the picture below



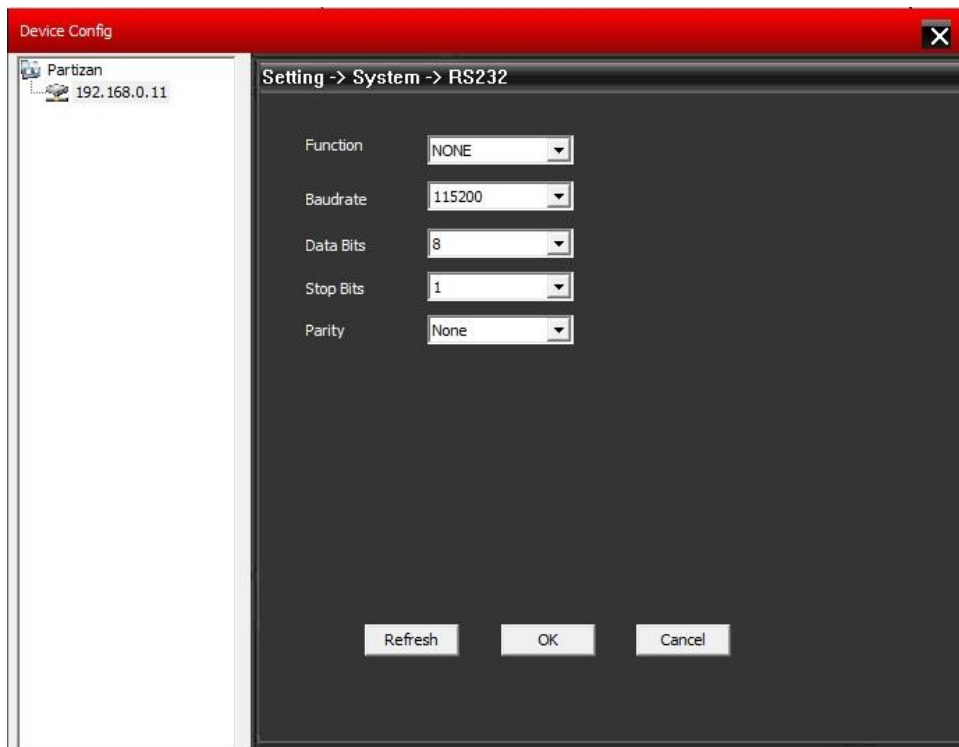
GUI Display: add and modify camera names, display time, channel name, video status, alarm status, transparency, and display resolution, including the mask area, see picture below



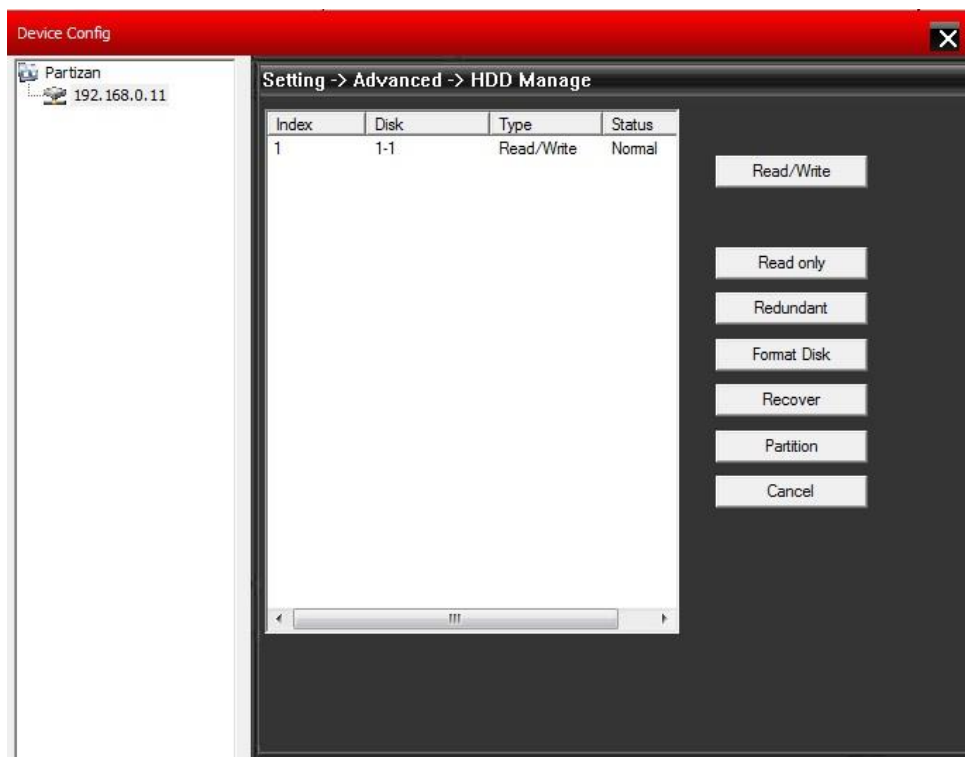
PTZ: Configure PTZ for different cameras.



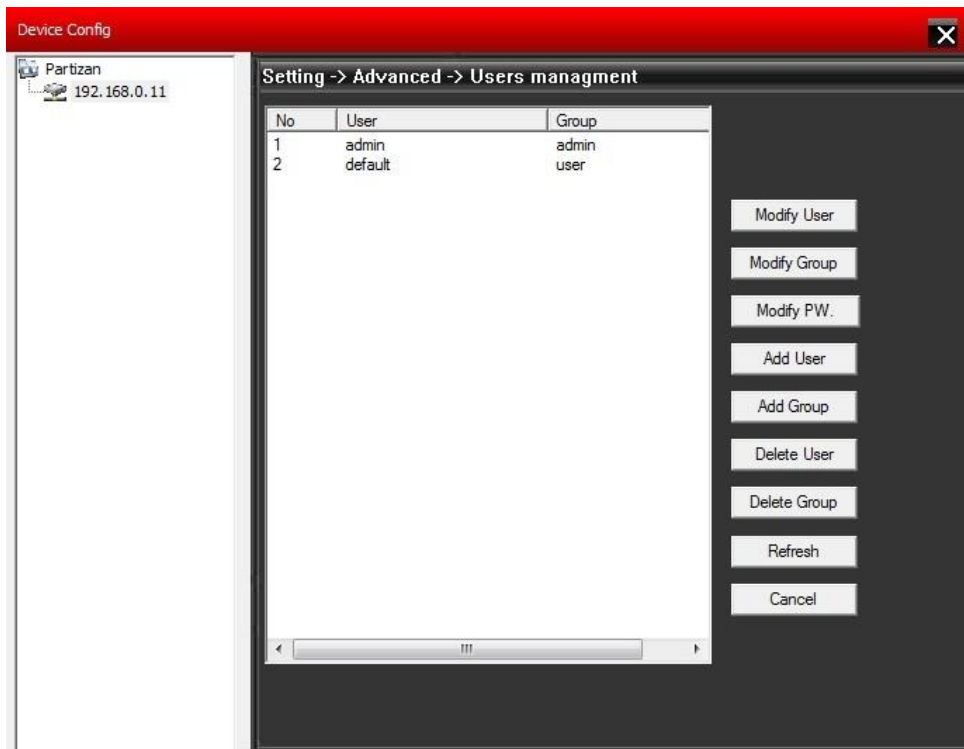
RS232: Configure RS232 port, see image below



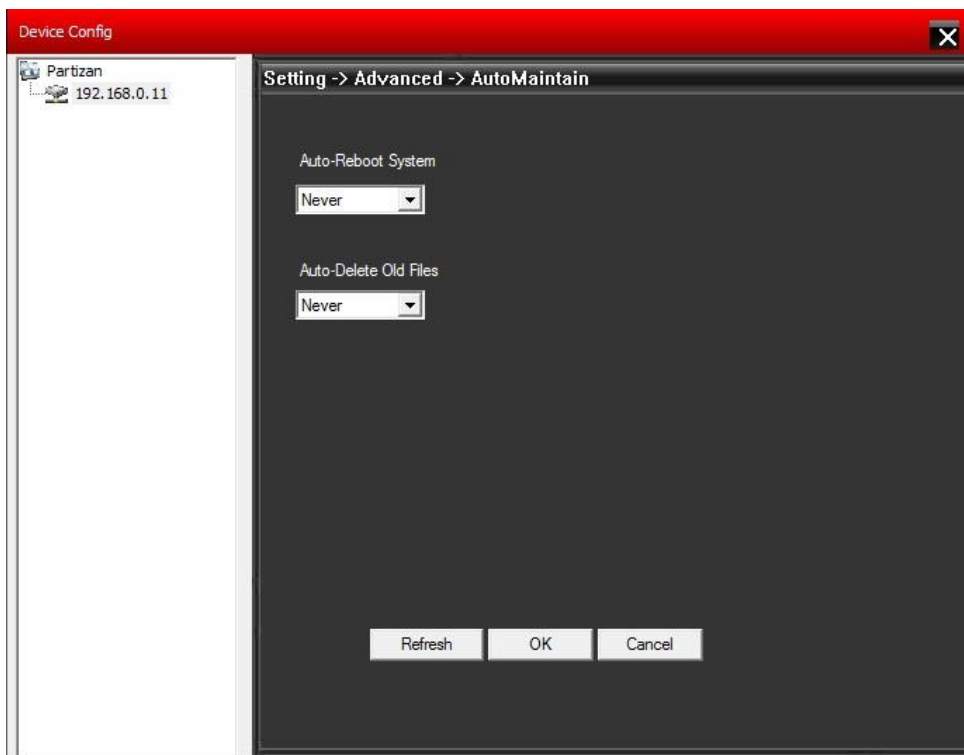
Setting: Advanced: HDD Manage:



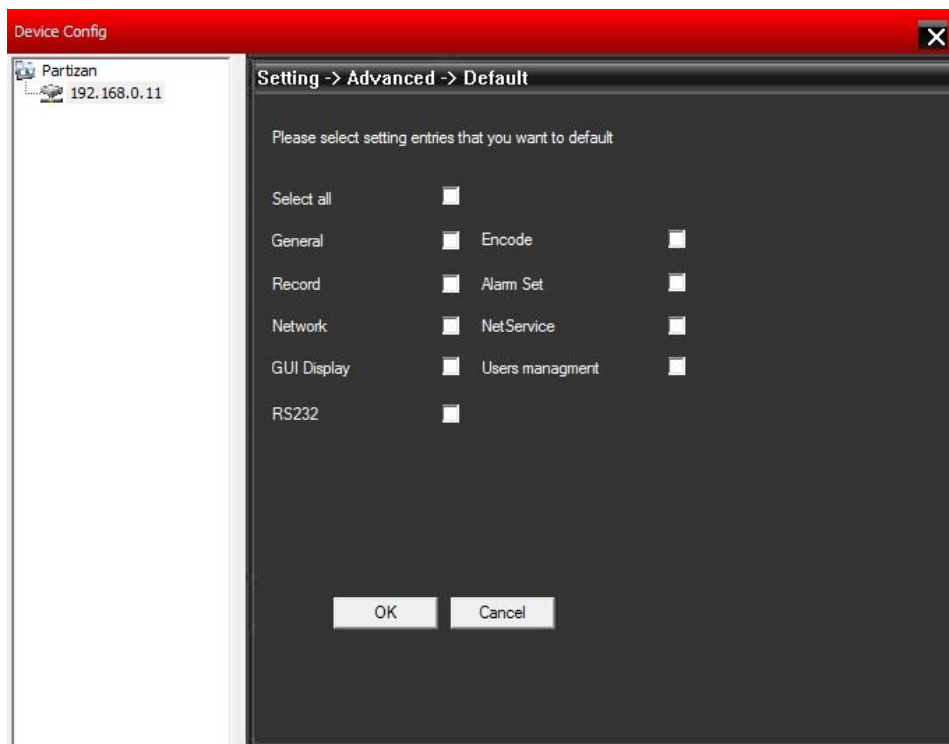
Users' management: change group, edit users, add users and groups, change passwords etc..., see image below:



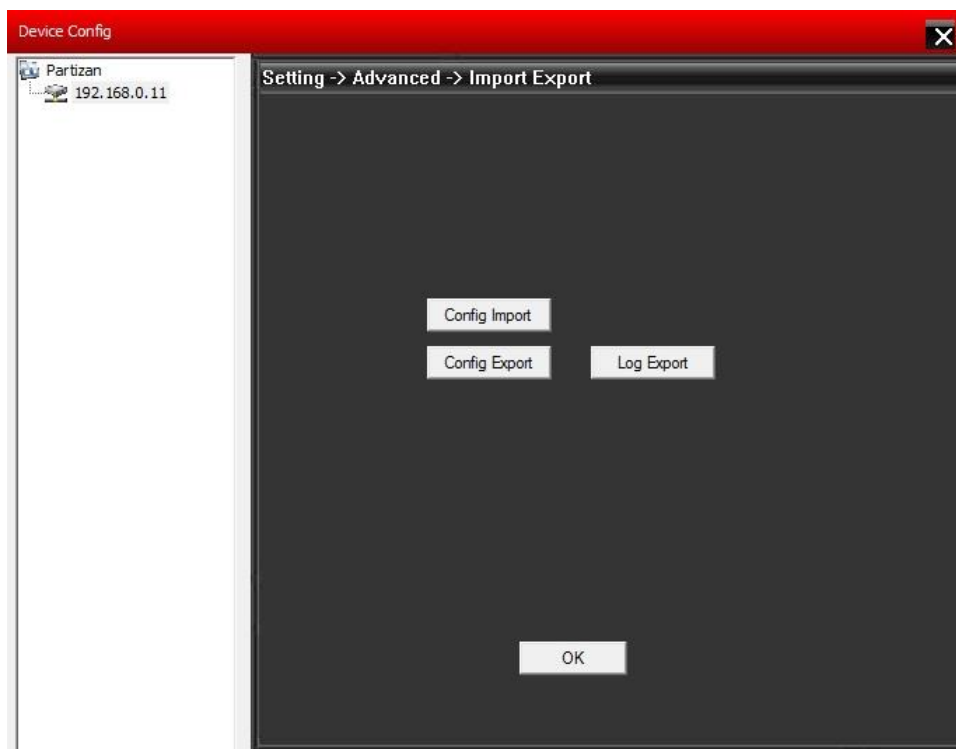
Auto Maintain: Set automatic reboot, delete files, see picture below.



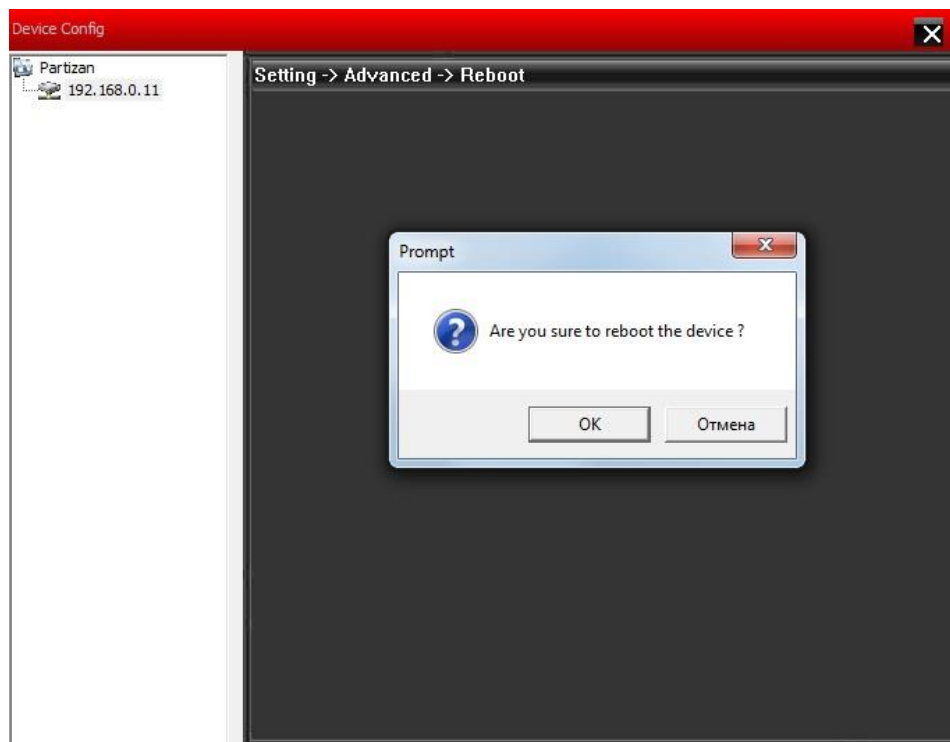
Default: Restore factory settings



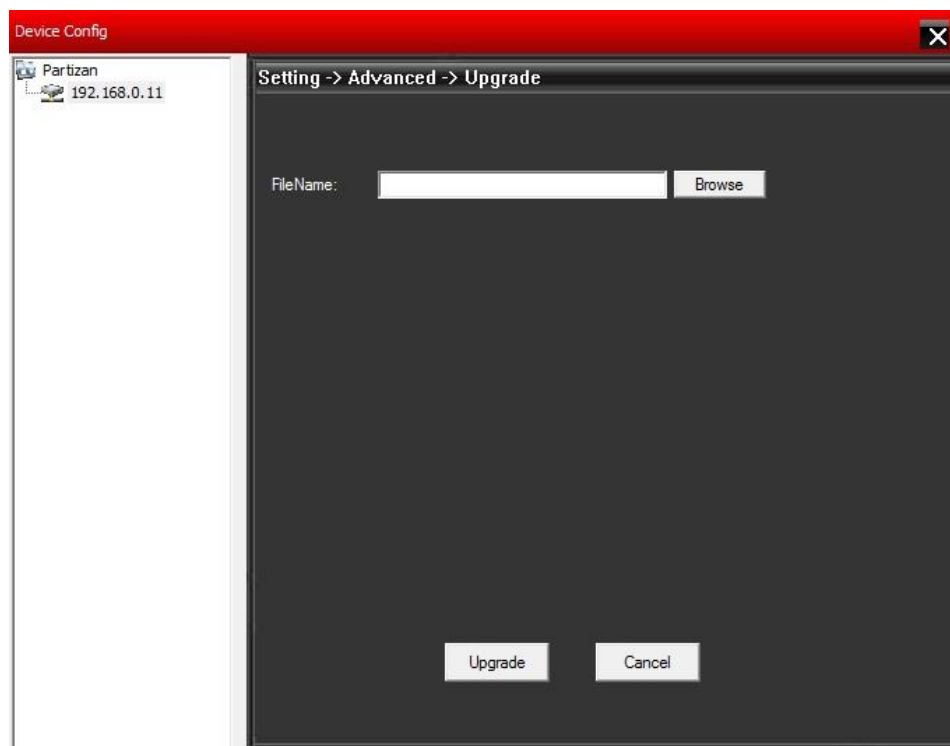
Import/export: import all settings made by the user previously, export settings made by the user, saving the log.



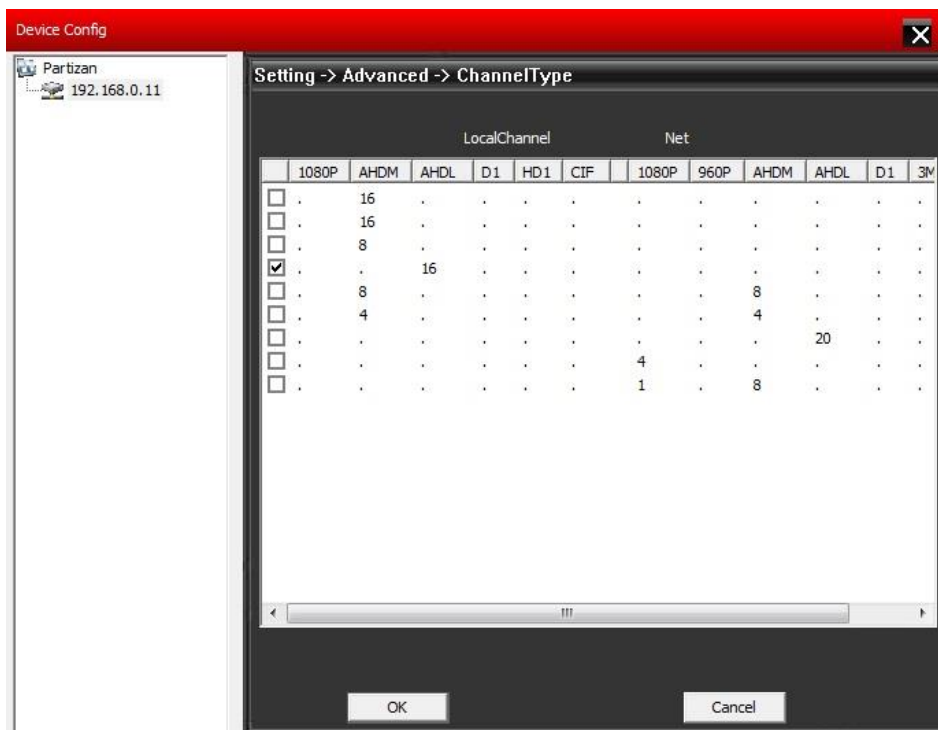
Reboot: Restart device



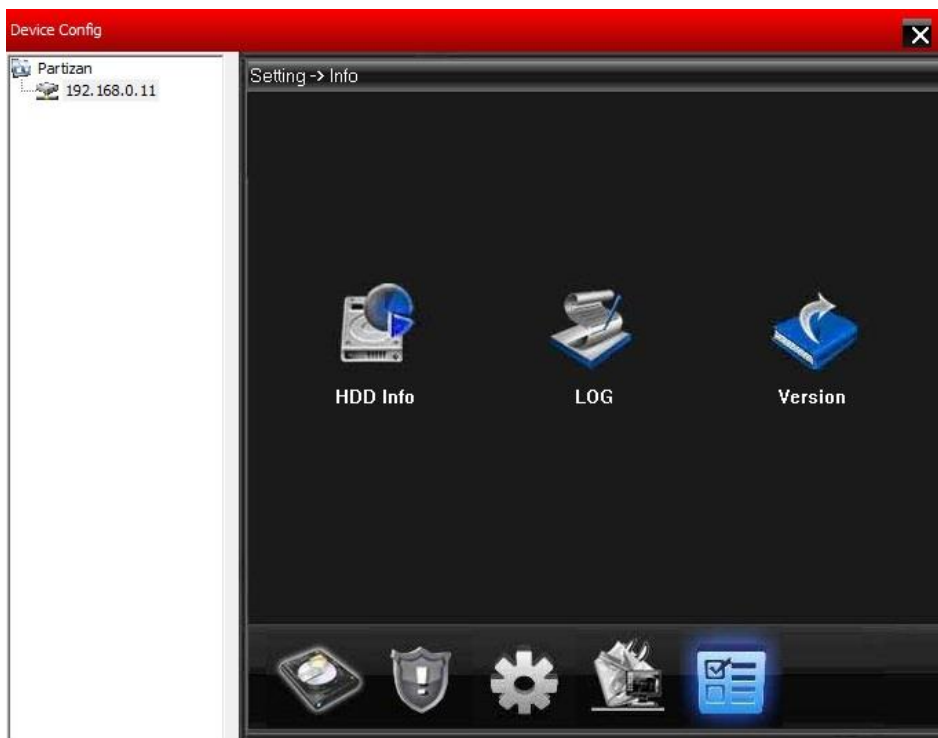
Upgrade: Update the software on the DVR or IP camera.



Channel Type: (only for hybrid DVRs): the ability to select the operating mode



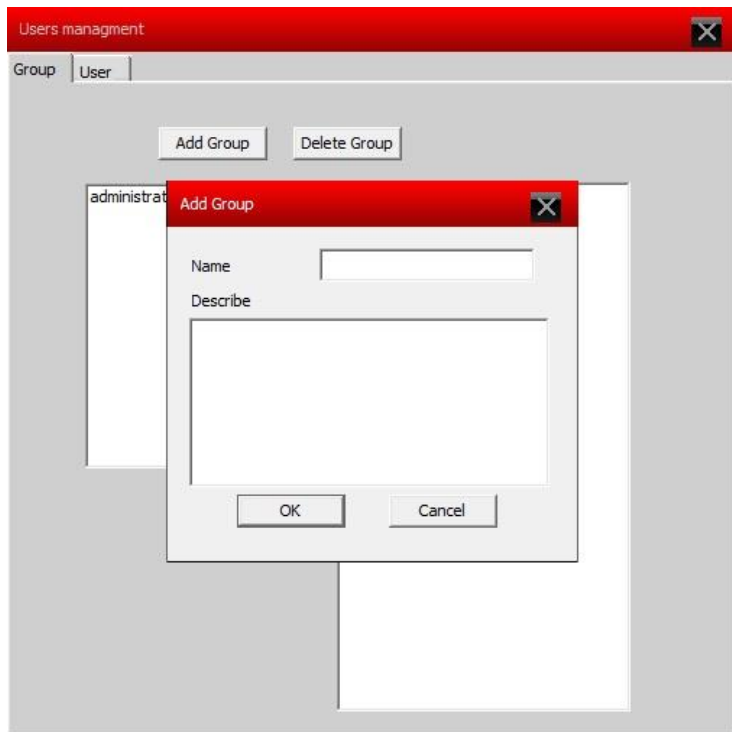
Info: Displays information on the system, see the image below:



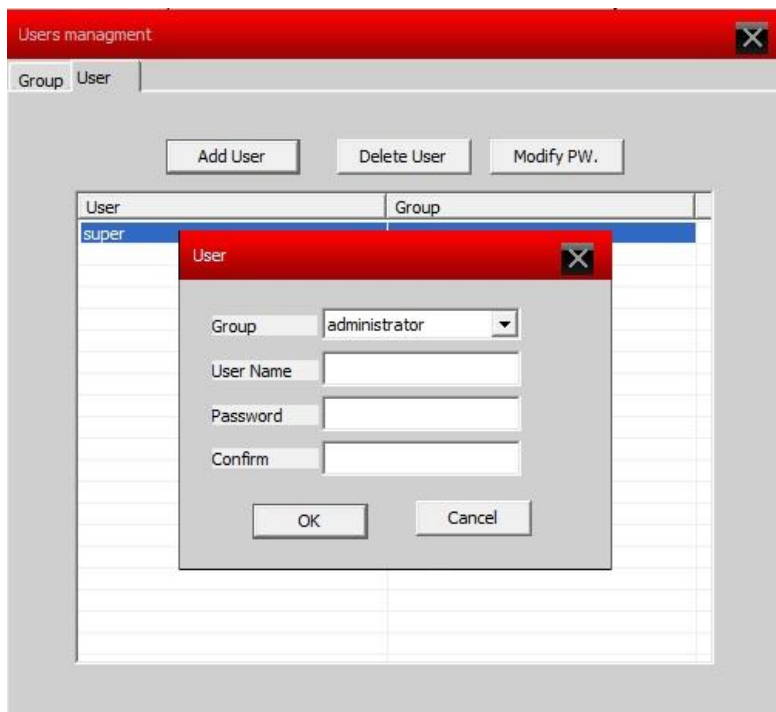
Available in system menu, hard disk space, event log, and versions of software and firmware.

Chapter 5 Users management

5.1 Groups: Add, delete groups, and customize their rights, refer to the image below:



5.2 Users: add, delete users, and change their passwords.



Chapter 6 Local Log

The user can search for events, alarm events, and other events, such as time, in the log see the image below:

Local Log					
Log Type		Operation	Begin Time	4/28/2015	12:00:00 AM
Operation		All	End Time	4/28/2015	11:59:59 PM
<input type="button" value="Search"/> <input type="button" value="NextPage"/> <input type="button" value="PrePage"/> <input type="button" value="Log Export"/>					
No	Type	Date	Device	User	Describe
1	System Op...	2015-04-28 09:08:11		super	User:super Login
2	Video	2015-04-28 09:08:34	192.168.0.11	admin	Connect successful
3	Video	2015-04-28 09:10:29	ADH-18v	user	Connect successful
4	Video	2015-04-28 09:10:34	ADH-18v	user	Channel 1 Open OK
5	Video	2015-04-28 09:10:34	ADH-18v	user	Channel 2 Open OK
6	Video	2015-04-28 09:10:34	ADH-18v	user	Channel 3 Open OK
7	Video	2015-04-28 09:10:34	ADH-18v	user	Channel 4 Open OK
8	Video	2015-04-28 09:10:34	ADH-18v	user	Channel 5 Open OK
9	Video	2015-04-28 09:10:34	ADH-18v	user	Channel 6 Open OK
10	Video	2015-04-28 09:10:34	ADH-18v	user	Channel 7 Open OK
11	Video	2015-04-28 09:10:34	ADH-18v	user	Channel 8 Open OK
12	Video	2015-04-28 09:10:40	ADH-18v	user	Channel 1 Closed successful
13	Video	2015-04-28 09:12:54	ADH-18v	user	Channel 4 Closed successful
14	Video	2015-04-28 09:12:54	ADH-18v	user	Channel 4 Open OK
15	Video	2015-04-28 09:13:04	ADH-18v	user	Channel 6 Closed successful
16	Video	2015-04-28 09:13:04	ADH-18v	user	Channel 6 Open OK
17	Video	2015-04-28 09:13:09	ADH-18v	user	Channel 6 Closed successful
18	Video	2015-04-28 09:13:09	ADH-18v	user	Channel 6 Open OK
19	Video	2015-04-28 09:13:16	ADH-18v	user	Channel 3 Closed successful
20	Video	2015-04-28 09:13:17	ADH-18v	user	Channel 3 Open OK
21	Video	2015-04-28 09:13:27	ADH-18v	user	Channel 3 Closed successful
22	Video	2015-04-28 09:13:28	ADH-18v	user	Channel 3 Open OK
23	Video	2015-04-28 09:13:33	ADH-18v	user	Channel 3 Closed successful
24	Video	2015-04-28 09:13:33	ADH-18v	user	Channel 3 Open OK
25	Video	2015-04-28 09:13:56	ADH-18v	user	Channel 6 Closed successful
26	Video	2015-04-28 09:13:56	ADH-18v	user	Channel 6 Open OK
27	Video	2015-04-28 09:14:01	ADH-18v	user	Channel 6 Closed successful
28	Video	2015-04-28 09:14:02	ADH-18v	user	Channel 6 Open OK
29	Video	2015-04-28 09:14:03	ADH-18v	user	Channel 4 Closed successful
30	Video	2015-04-28 09:14:03	ADH-18v	user	Channel 4 Open OK
31	Video	2015-04-28 09:14:06	ADH-18v	user	Channel 4 Closed successful
32	Video	2015-04-28 09:14:06	ADH-18v	user	Channel 4 Open OK
33	Video	2015-04-28 09:14:45	ADH-18v	user	Channel 7 Closed successful
34	Video	2015-04-28 09:14:45	ADH-18v	user	Channel 7 Open OK

Chapter 7 Recording

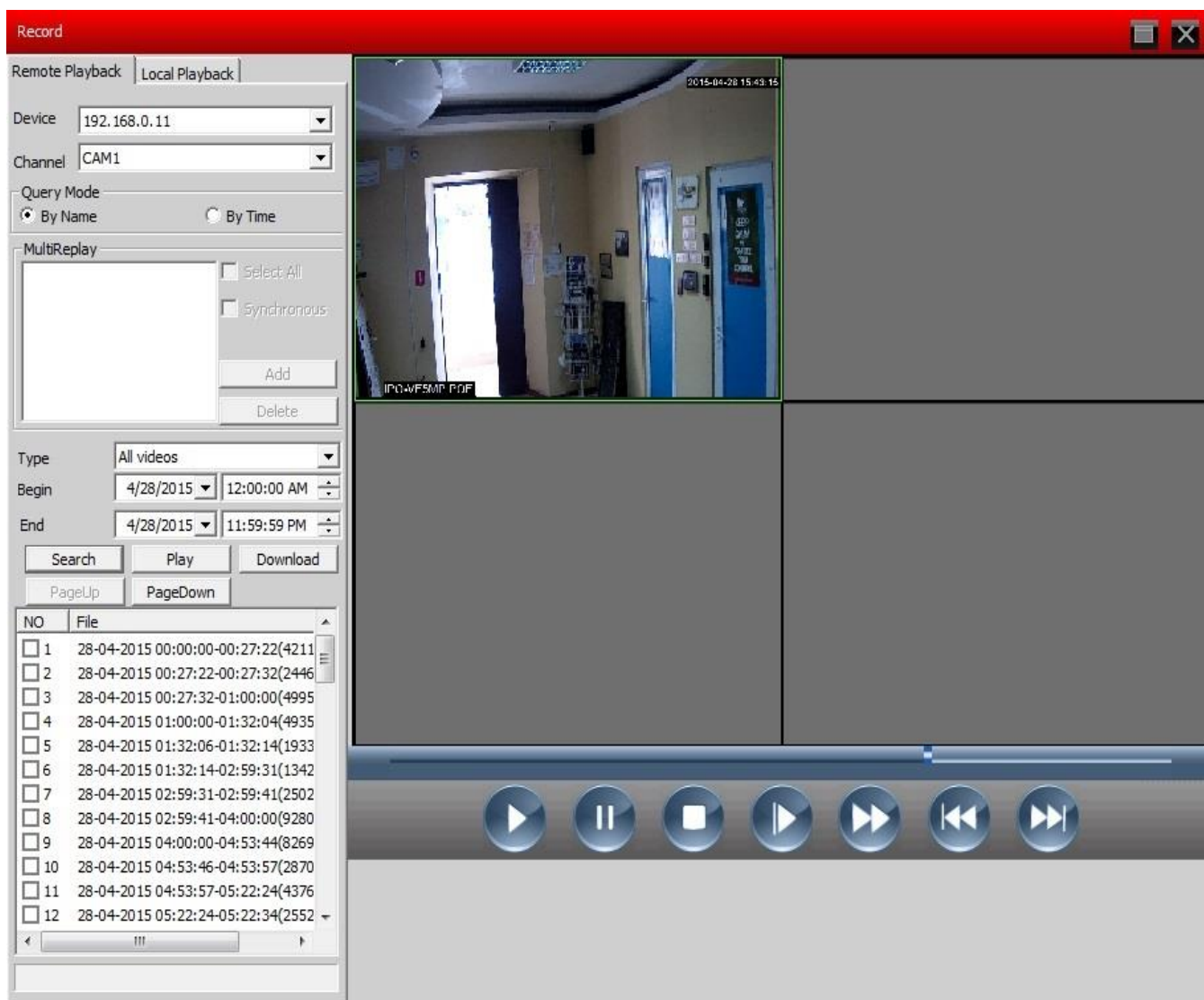
7.1 Playback:

Playback is possible in two versions: remote playback and local playback.

Remote Playback: Playback DVR.

Local Playback: Playback of recordings from the PC HDD.

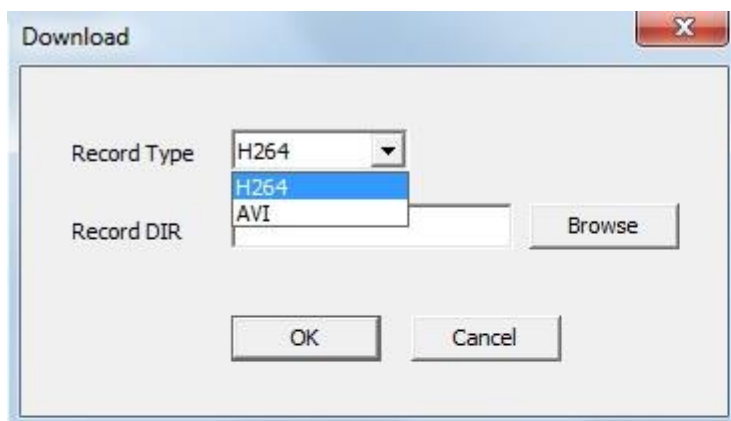
You can play any recording, a maximum of four channels simultaneously.



Meaning of icons

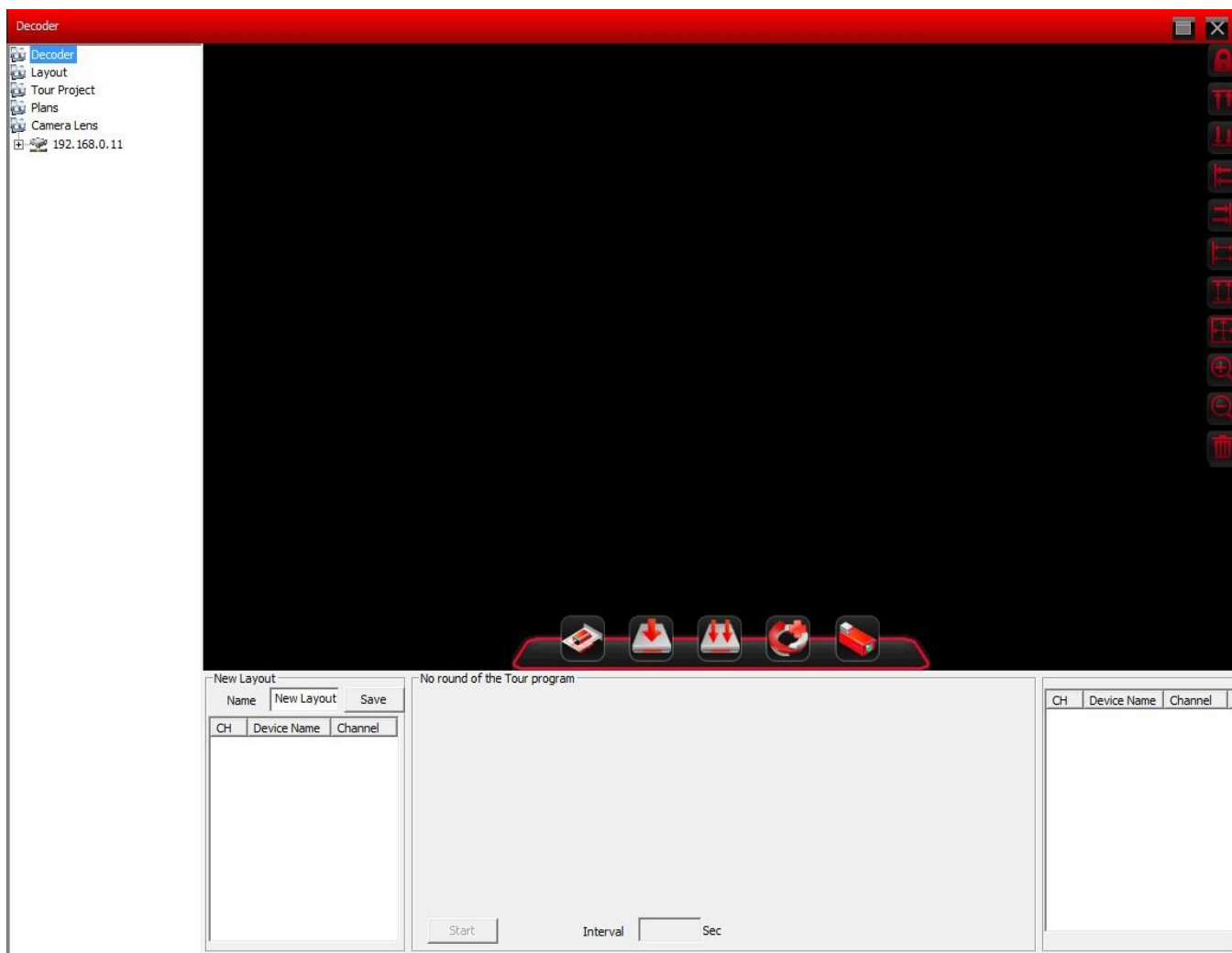
№	icons	Meaning
1		Play
2		Pause
3		Stop
4		Slow motion playback
5		Fast Playback
6		Previous Frame
7		Next Frame

7.2 Processing & Archiving: you can download found on the HDD files, by setting time and channel. Select channel length of time, click Load, select the encoding format and choose a folder to save.



Chapter 8 Advanced

8.1 Decoder



Add decoder



Save tours



Save tours as...



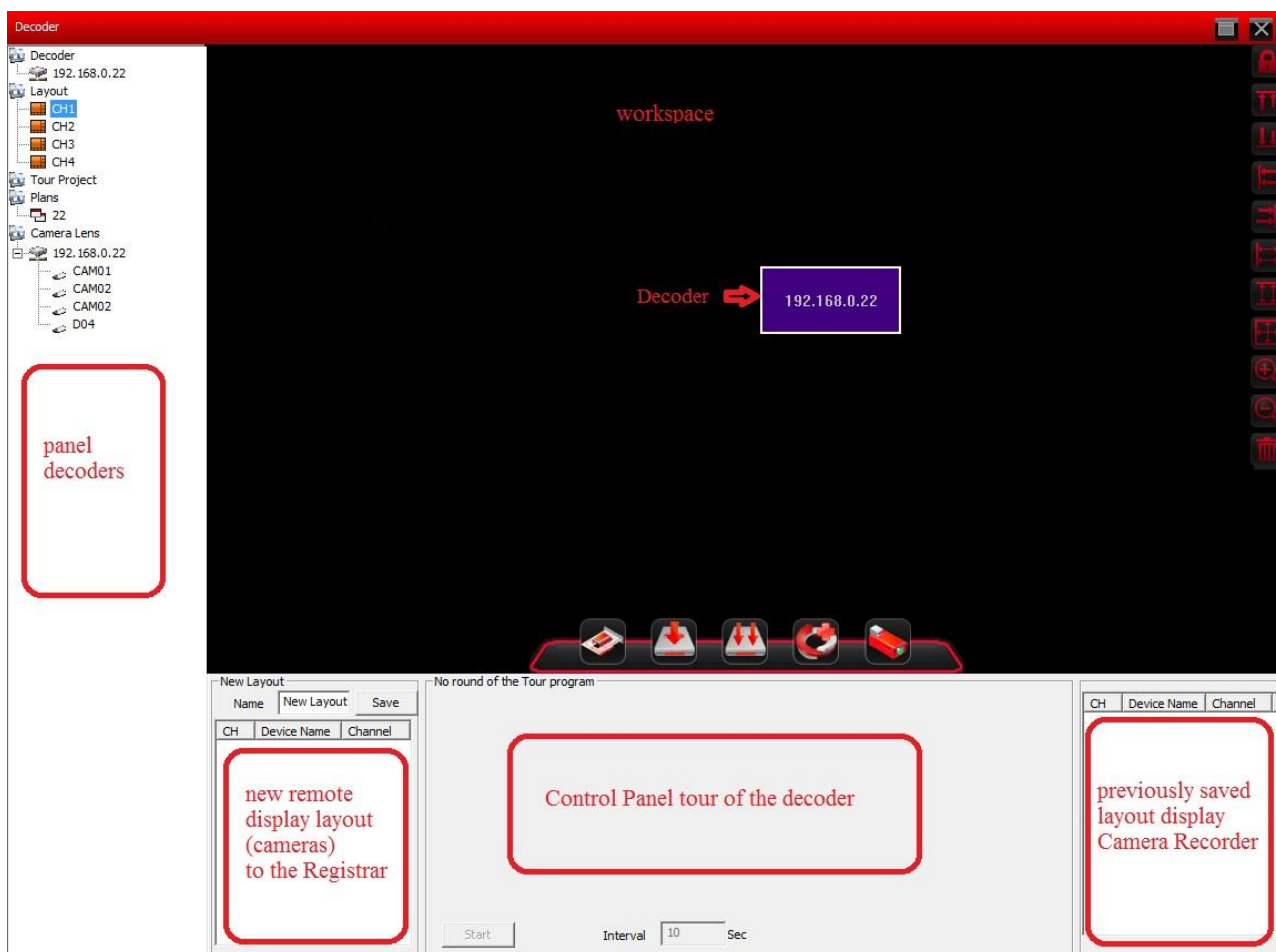
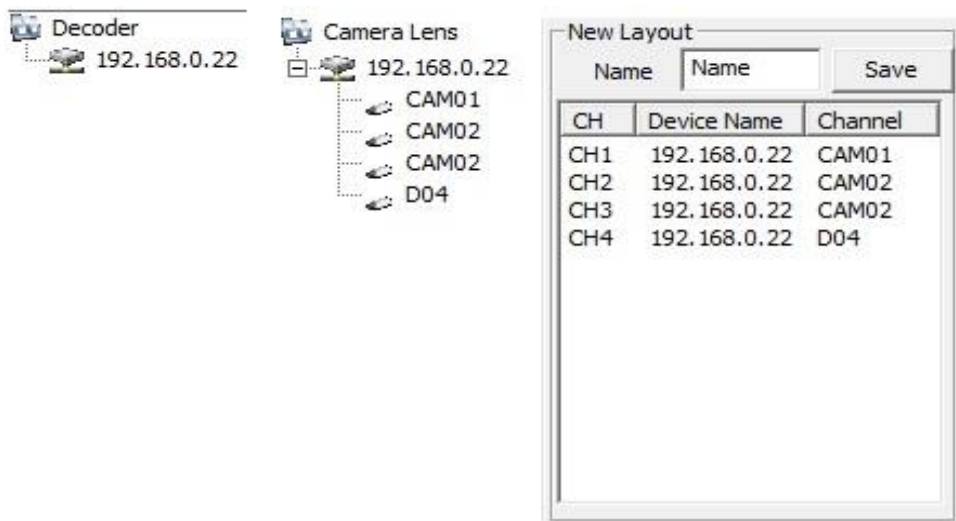
A new round of the tour program



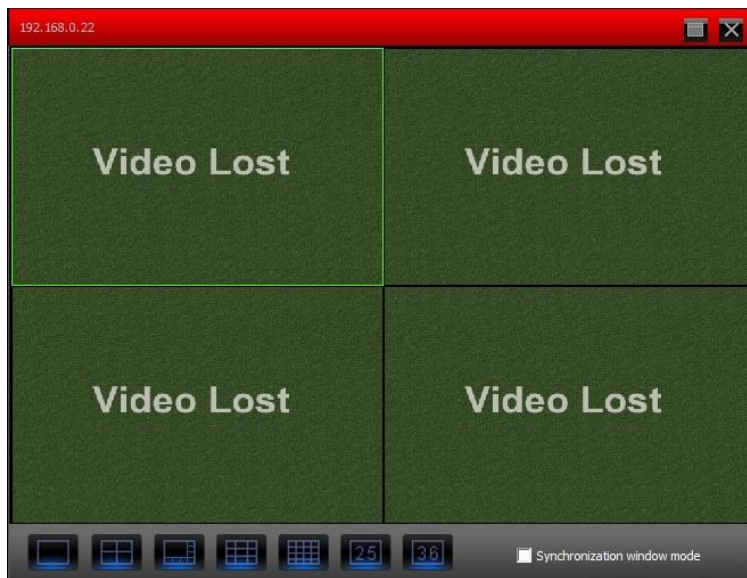
Edit the lens (device)

Create a decoder device (Registrar), then layout – drag lens (camera) in the desired order – save new configuration window to a friendly name, and then drag the layout in the new configuration window and click

Save as, then push A new round of the tour program, and click the left mouse button two times click on the desired layout and store by specifying the interval of the tour.



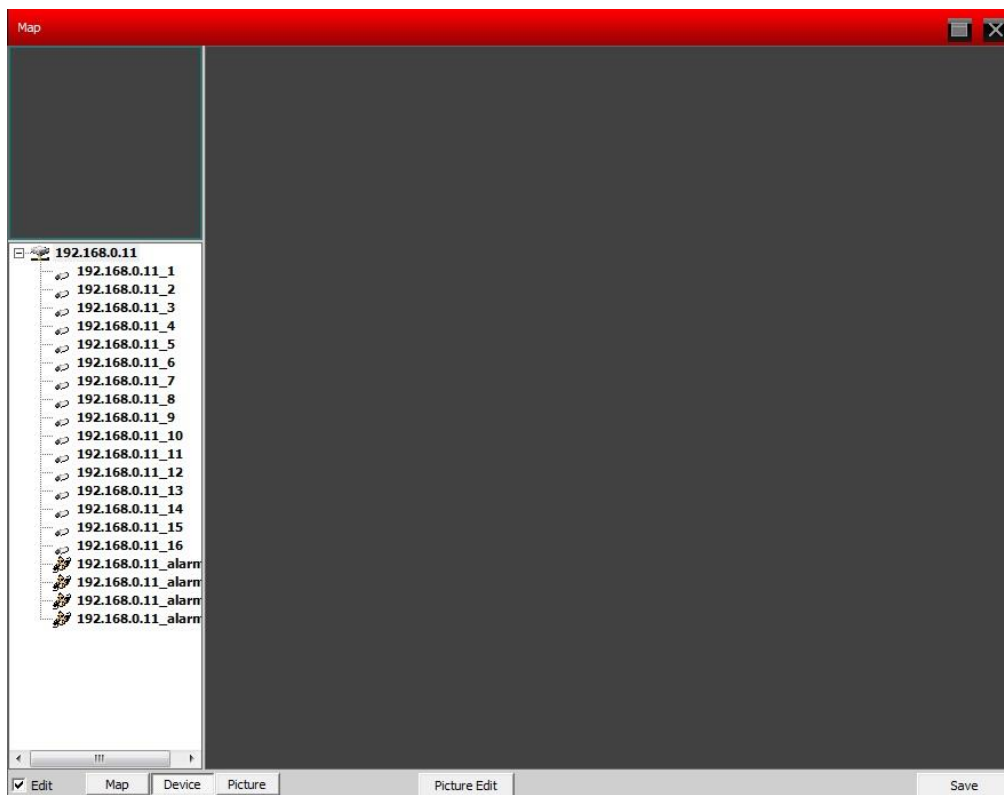
You can also view two Registrars by more than one decoder, and drag the open window of the decoder to the second monitor.



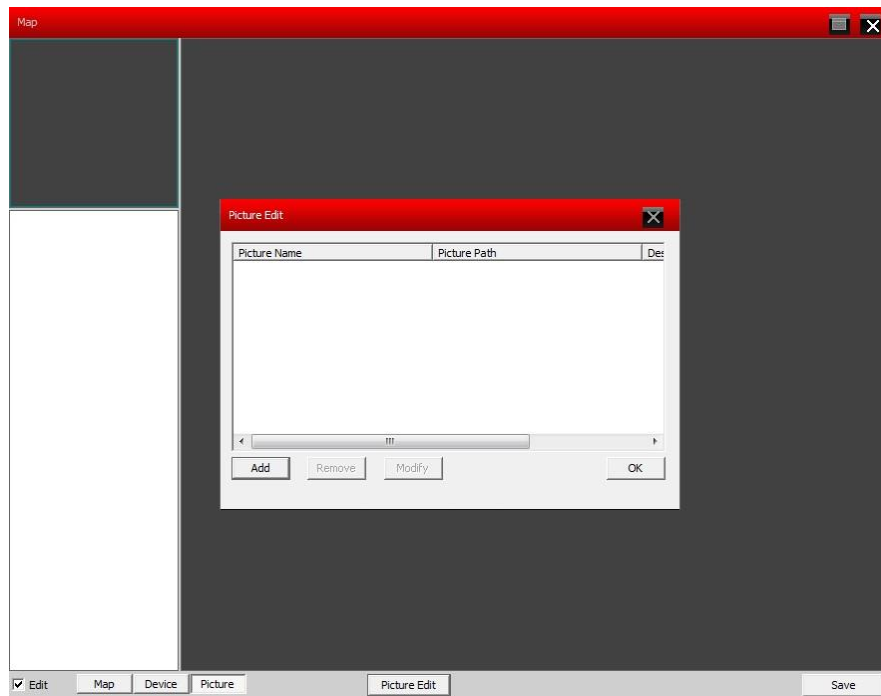
Open decoder window

8.2 Map

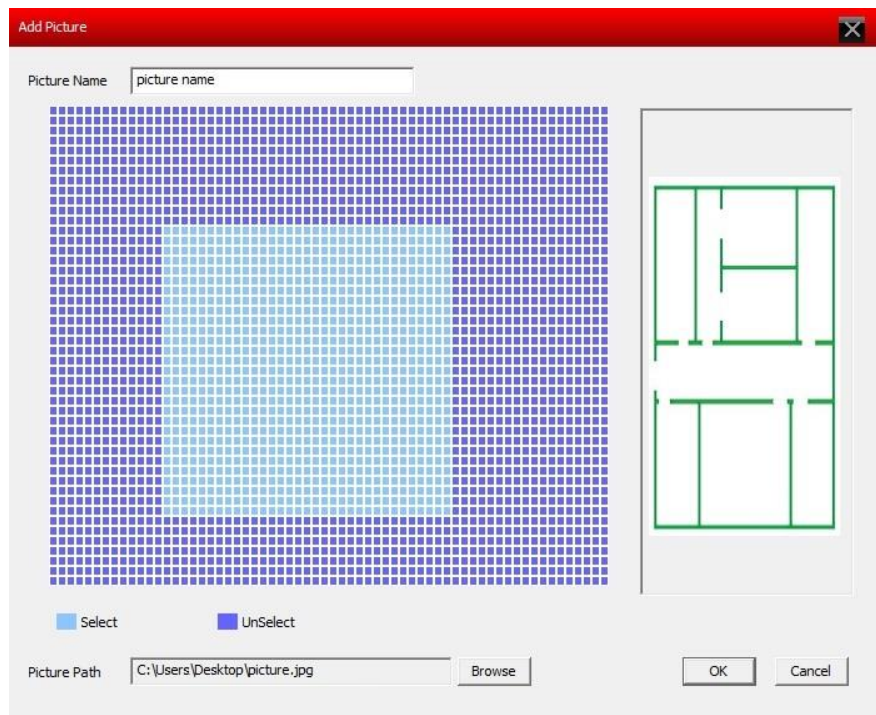
Go to the Map, put a check mark next to the Change, you will see the device settings and snapshots (images)



Click on the image, then edit image

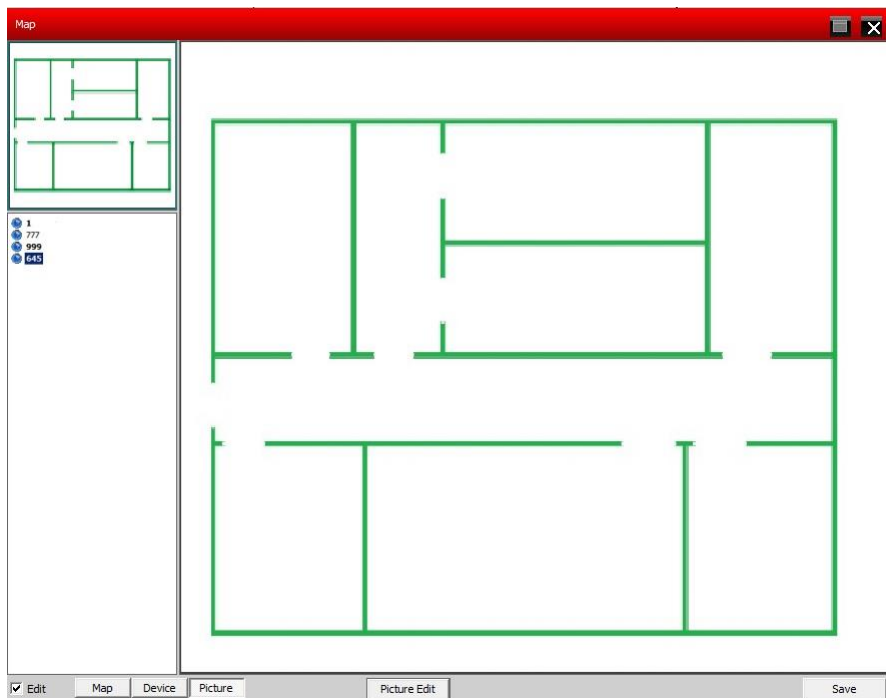


Add an image to the scene (for example floor plan)

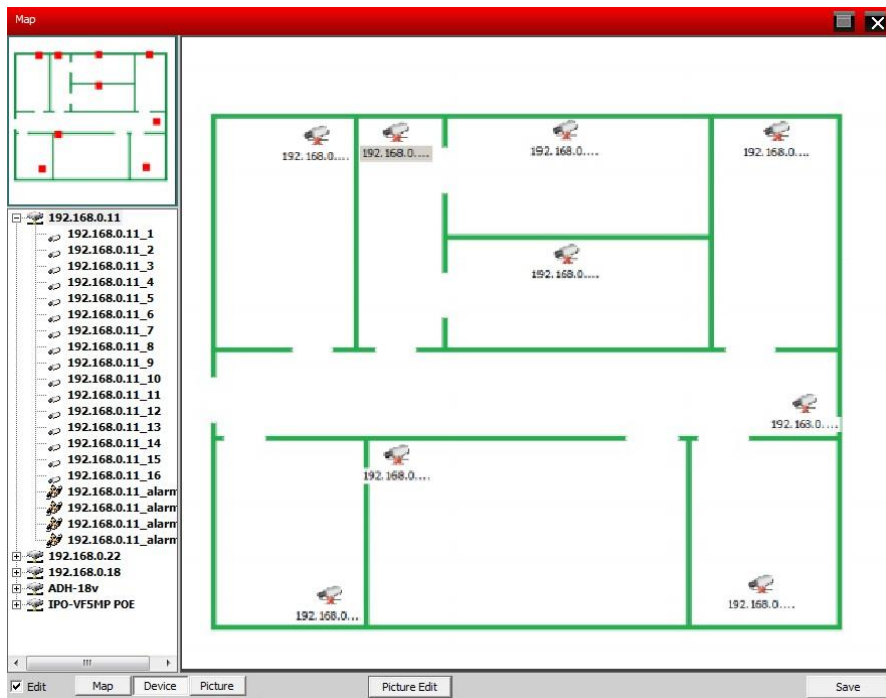


Select the desired area of the image or the whole image

In the right pane, drag the desired image



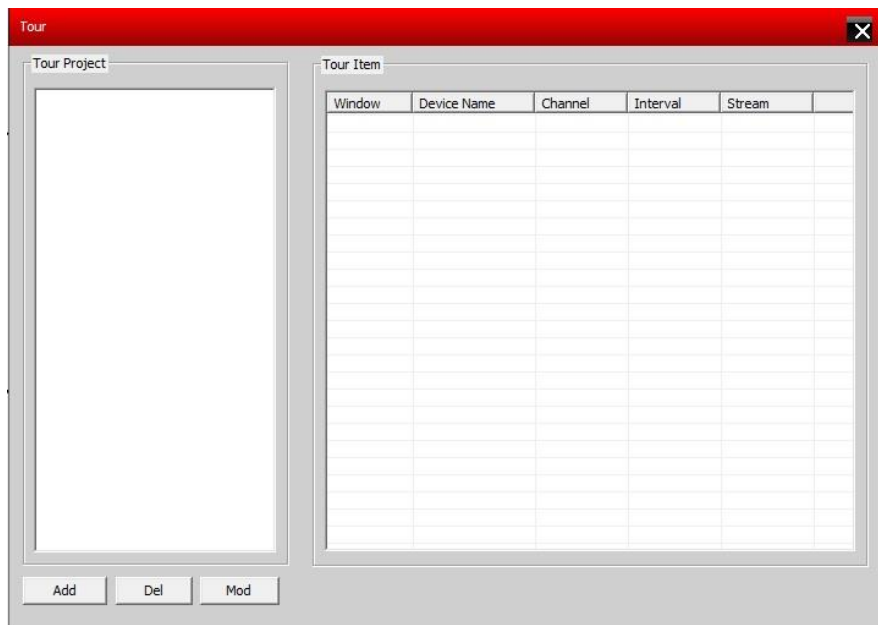
Then, go to the devices tab and drag your camera



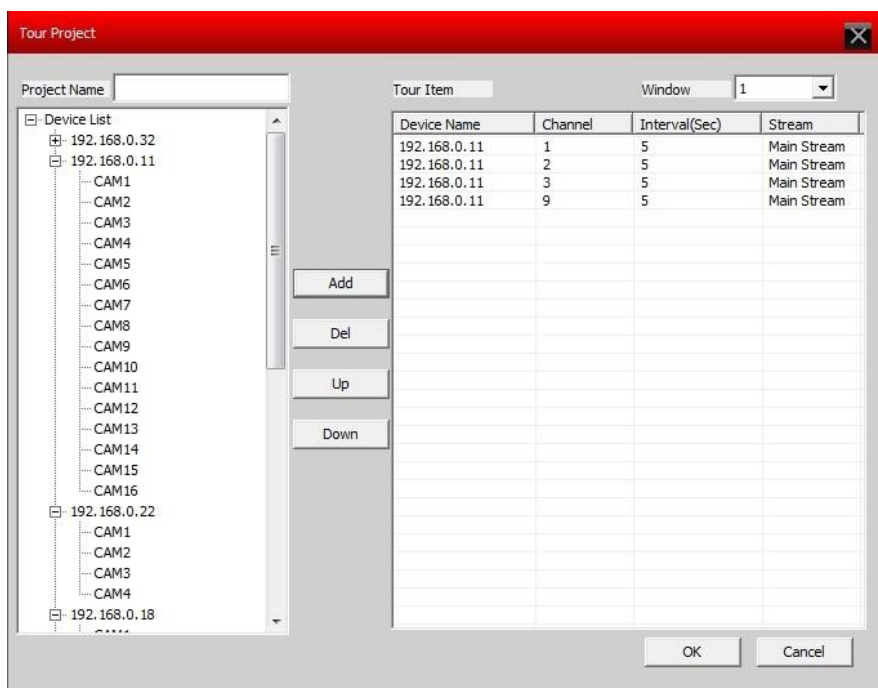
After adding cameras to the picture press the right button to save, Thanks to this function you can always have up-to-date data on your equipment placement for one or more objects.

8.3 Tour

Specify the display mode of the channels and their intervals

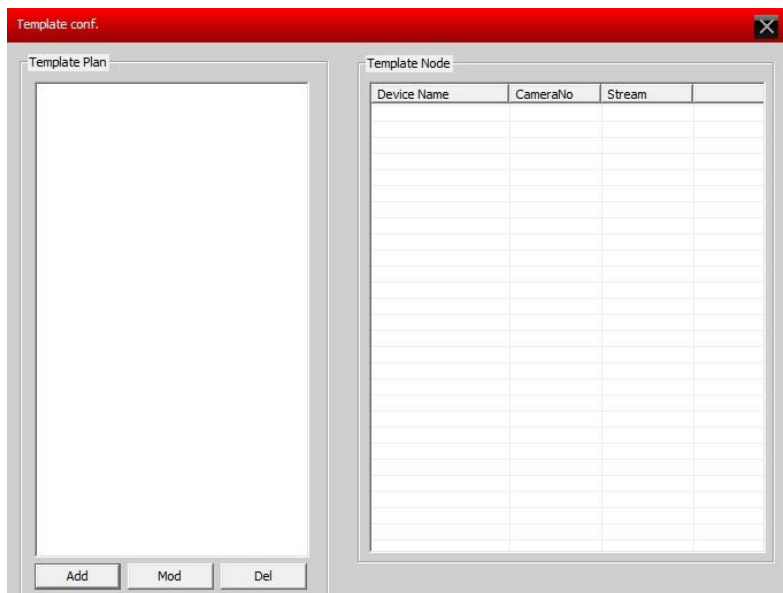


Add, remove, or Edit Project Tour

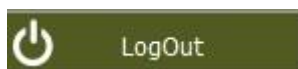
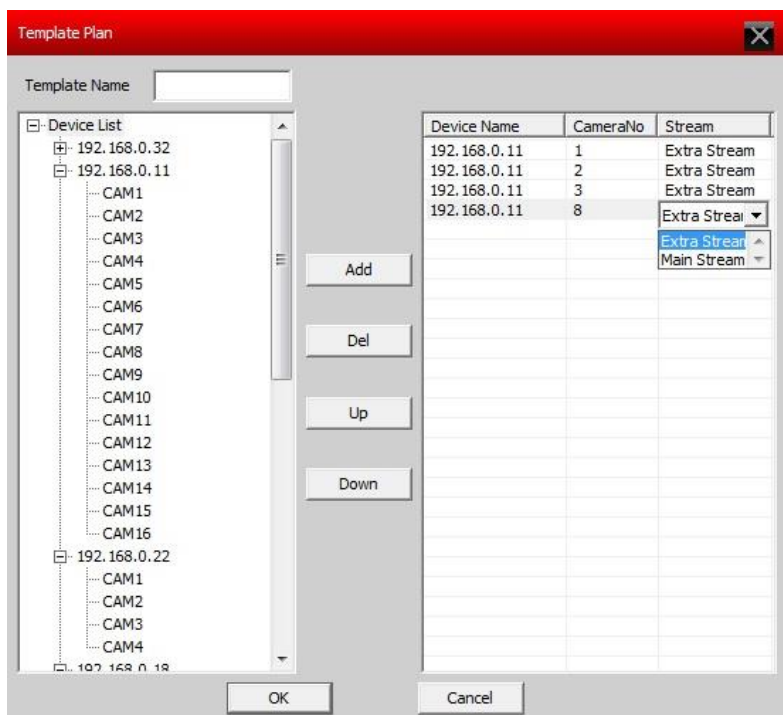


Edit order, spacing and flow display device (Windows)

8.4 Template conf. Task templates display devices



Add a rendering template (for a change) channels



Finishes operating CMS program.