



Control Plus and Partizan Camera Setup Guide



There are three steps required to add Partizan Cameras into the Orisec Control Plus app for streaming:

1. Connect the cameras to the Partizan cloud (page 2)
2. Add the cameras to the control panel using Orisec UDL (page 3)
3. Add the cameras to the Orisec ControlPlus app (page 4)

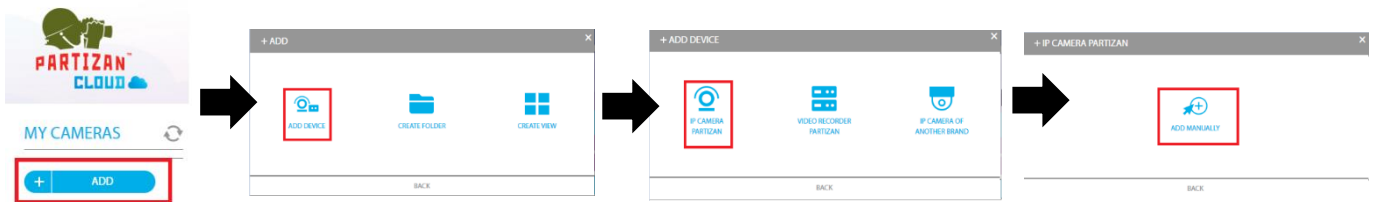
See over for further details.

1. Connect the Cameras to the Partizan Cloud

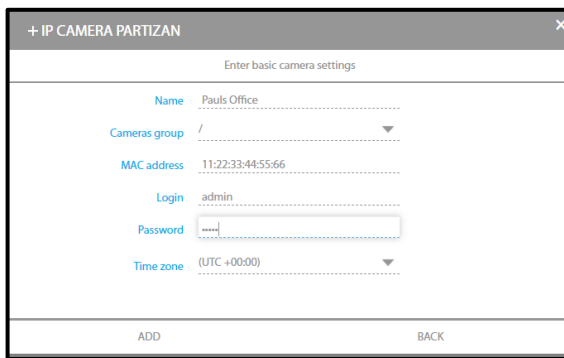
1. Unbox the camera and fix it at the desired location.
2. Take note of the MAC address, Login in Name and Password on the side of the box:



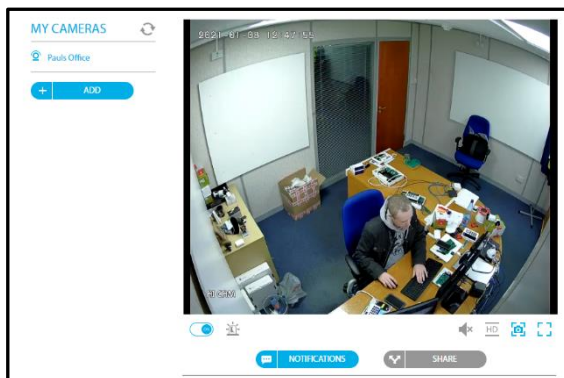
3. Install the power supply and network cable or POE cable to the camera so the camera is connected to the internet.
4. If they don't already have one, register an account for the end-user / site at: <https://login.partizancloud.com/registration>
5. Login to the account using the end-user email and password at: <https://login.partizancloud.com/login>
6. From the left-hand pane select ADD > ADD DEVICE > IP CAMERA PARTIZAN > ADD MANUALLY



7. Enter the required information followed by 'ADD'
(Refer to step 1 for MAC address and login name/ password.)



Once added the image will be visible on the screen using a supported browser (Google Chrome/ Microsoft Edge/ Firefox)



Additional cameras may be added following the same steps.

2. Add the cameras to the control panel using Orisec UDL

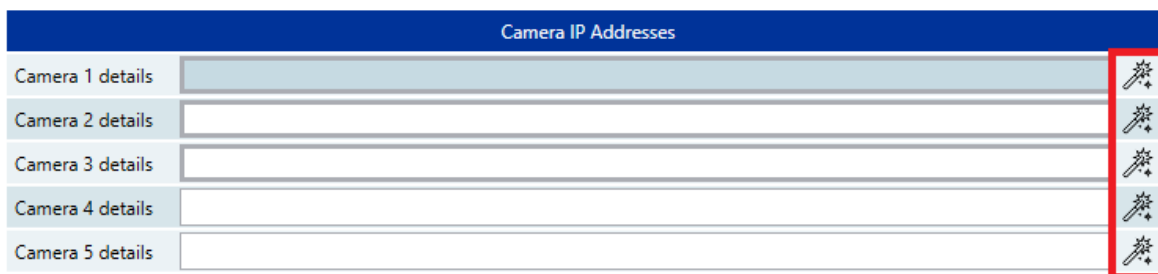
1. Open the Orisec UDL (Version 5.0.8.1 onwards)
2. Open the relevant account and connect to the required site.
3. Select 'Coms' at the top;



4. Select 'UDL Setup' from the left hand pane;

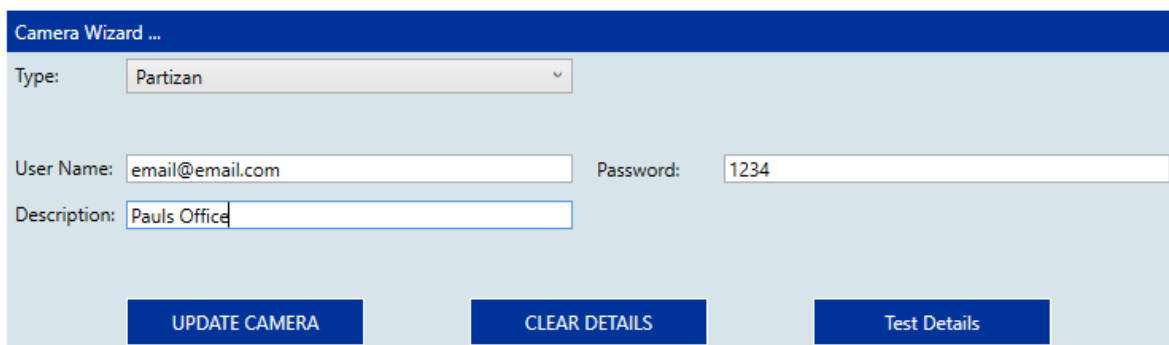


5. Select Camera 1's Wizard icon to open the setup menu at the bottom of the screen;



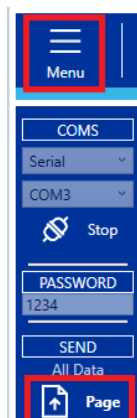
6. Enter the following information;

- Type: Select 'Partizan'
- Username: The email address that is registered to the Partizan account.
- Password: The password that is registered to the Partizan account.
- Description: This has to match the description for the camera that was added to the Partizan account.



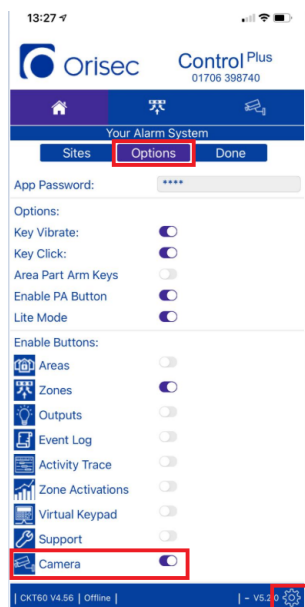
Once all information has been added select 'UPDATE CAMERA'

7. Send the information to the control panel:



3. Add the cameras to the Orisec ControlPlus App

1. Open the Control Plus application.
2. Tap the Settings cog
3. Tap the Options tab
4. Enable 'Cameras'
5. Connect to the site and select cameras.



Minimum Requirements

- Control Panel
 - CP/CK/CT-20/60 – Version 1.00 onwards
 - W-CP-40 E/K/T – Version 2.00 onwards
 - CP-30/50/100/200 – Version 3.00 onwards
- Communication module
 - ZX-5C Version – Version 4.40 onwards
 - CM2 – Version 2.20 onwards
- Orisec UDL – Version 5.0.8.1 onwards
- Orisec Control Plus application Version 5.0 onwards
 - Android: OS Version 6.0 (Marshmallow) onwards
 - Apple: iOS version 10.00 onwards.
- Partizan Cloud Camera - Version 2.0 onward

UK Based Technical Support

t: +44 (0) 1706 398740
e: support@orisec.co.uk