

Smart Curtain Switch
Myers MCR-220V/500W ZB+RF

User manual



PREMIUM SMART HOME SYSTEMS
by PARTIZAN

1. How to start	3
2. Main elements of the device	5
3. Connecting device to the power grid	6
4. Adding device to Partizan mobile application	7
4.1 Download and install Partizan mobile application.....	7
4.2 Starting the device via ZigBee Hub.....	7
5. Control Screen	9
6. Settings Menu.....	10
6.1 Connection Settings	10
6.2 Curtain settings	11
6.3 Schedule.....	11
6.4 Delete device.....	12

1. How to start

This device supports **Partizan Cloud Storage** service and **Partizan** mobile application for iOS and Android.

Partizan Cloud Storage benefits:



Your data cannot be stolen or damaged.



No one can access your devices, live and archived video without your permission.



Access to your account and devices from anywhere in the world. Even mobile Internet is enough.



Partizan app won "**Best Mobile Video Surveillance App 2019**" international award.

To take full advantage of the device, **install Partizan mobile application** for iOS or Android:



Partizan mobile application for iOS:

<https://apps.apple.com/app/partizan/id1473001227>

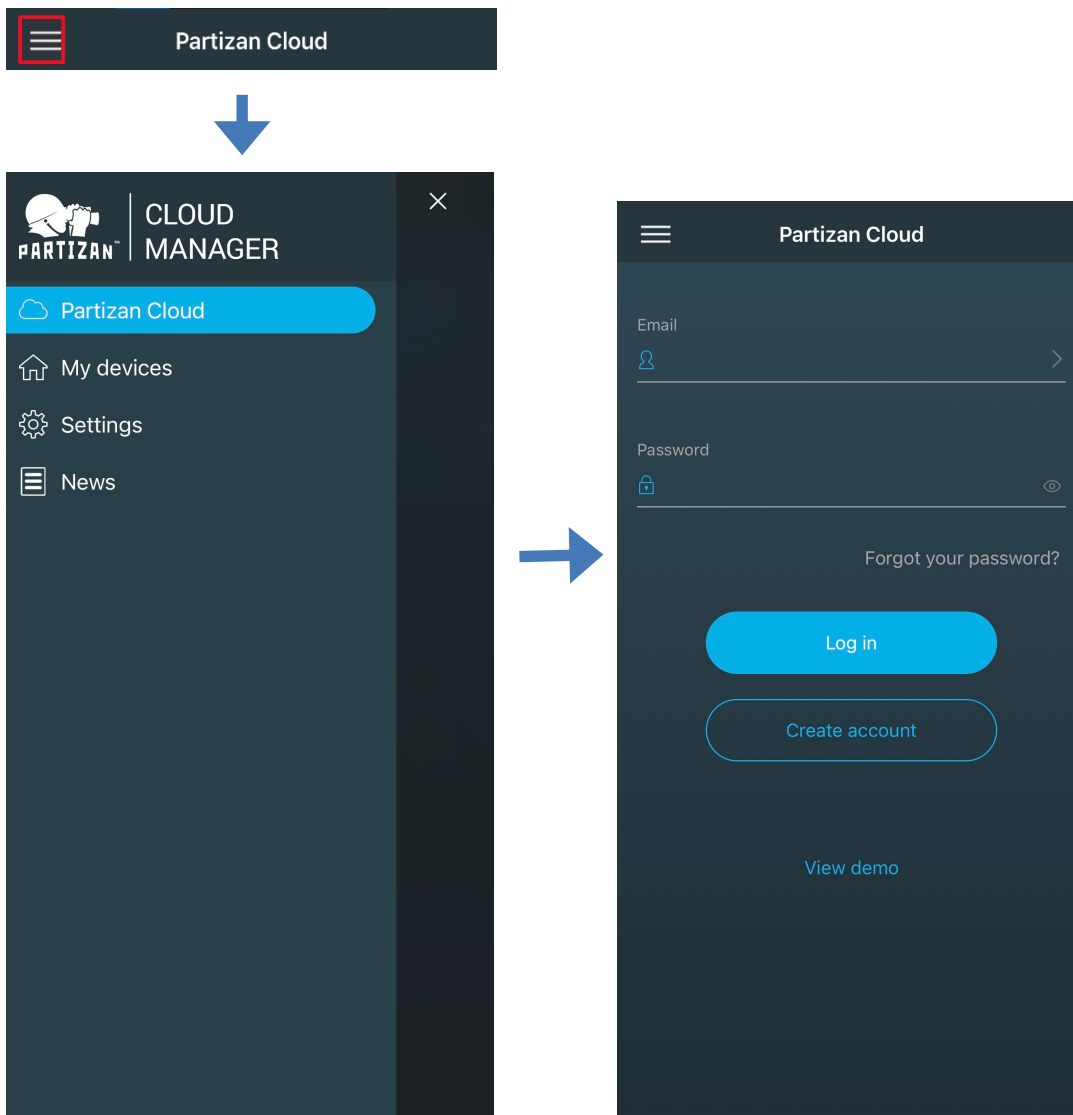


Partizan mobile application for Android:

<https://play.google.com/store/apps/details?id=com.partizan.pro>

To work with this device you need to **sign in to your cloud account**.

Open the app, use an **existing account** or **create a new one**:



After signing into the cloud account you can go directly to device setting.

If you have any questions,
please contact our technical support:

E-mail: support@partizan.global

Skype: partizan-support

Chat: +420 777 054 888 (Viber, Telegram, WhatsApp)



Technical support working time:
<https://partizan.global/support/technical-support>

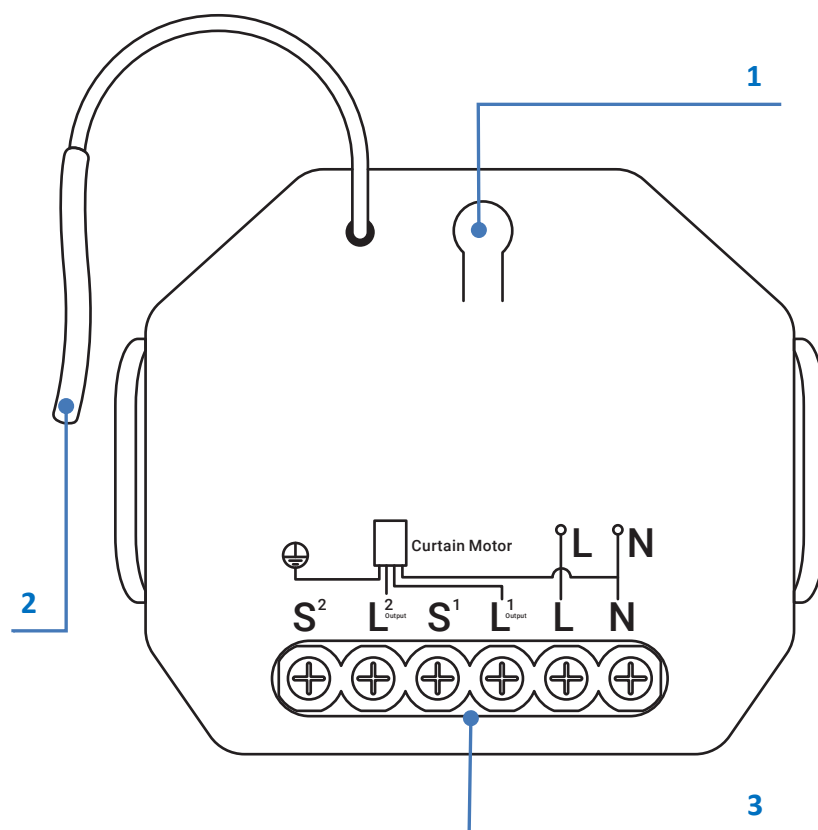


Partizan software:
<https://apps.partizan.global/>

2. Main elements of the device



WARNING! You will need a **ZigBee Hub** to connect and configure this device. **Make sure it is available and connected to the Partizan mobile app.**

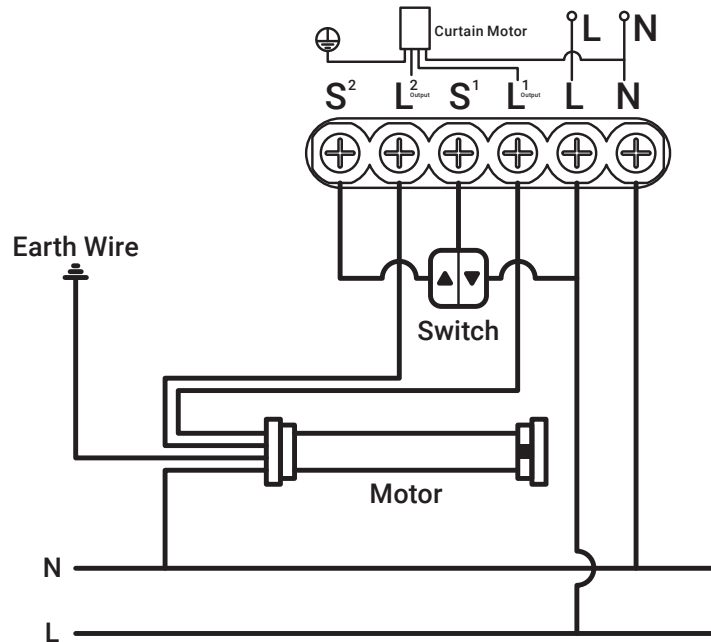


1. Reset button
2. Antenna
3. Connection contacts:
 - L - for electric motor
 - S - for switch

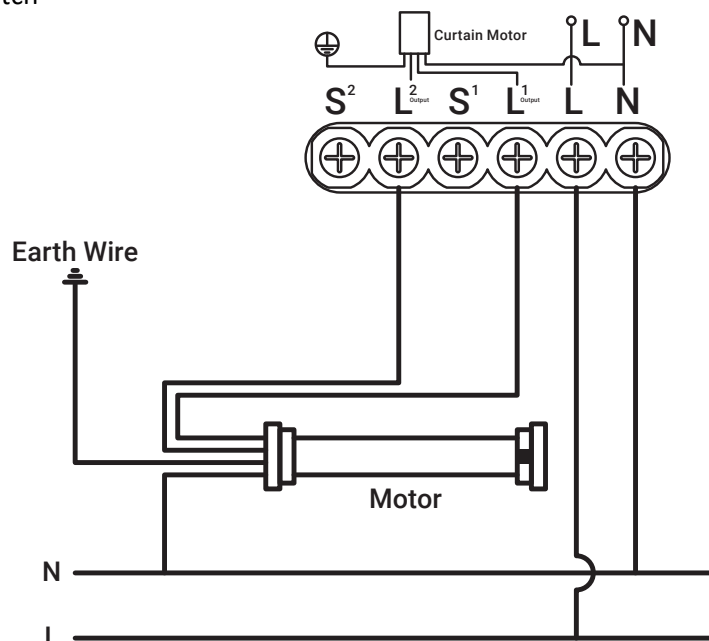
3. Connecting device to the power grid

The device is connected to the power grid using contacts L and N according to the following schemes:

a) With a curtain switch



b) Without a curtain switch



ATTENTION! Danger of electric shock! The connection must be performed by qualified specialists! Before installation, it is necessary to de-energize the electrical network (turn off the switch/circuit breaker/fuse)

4. Adding device to Partizan mobile application

4.1 Download and install Partizan mobile application



Partizan mobile application for iOS:

<https://apps.apple.com/app/partizan/id1473001227>

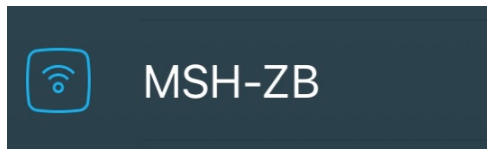


Partizan mobile application for Android:

<https://play.google.com/store/apps/details?id=com.partizan.pro>

4.2 Starting the device via ZigBee Hub

Launch **Partizan mobile application**. Click on **ZigBee Hub** in the list of added devices.



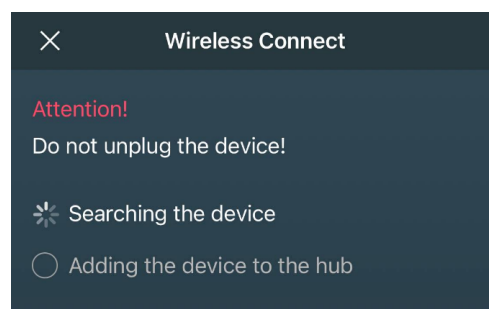
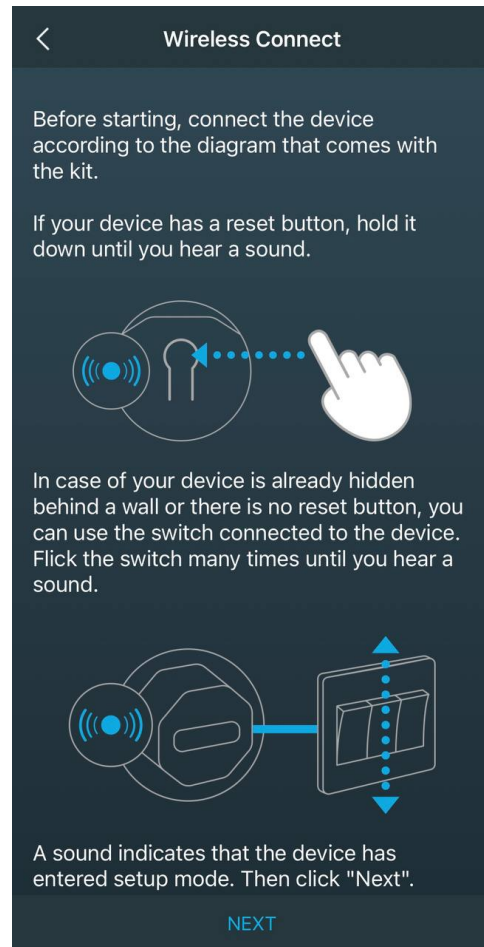
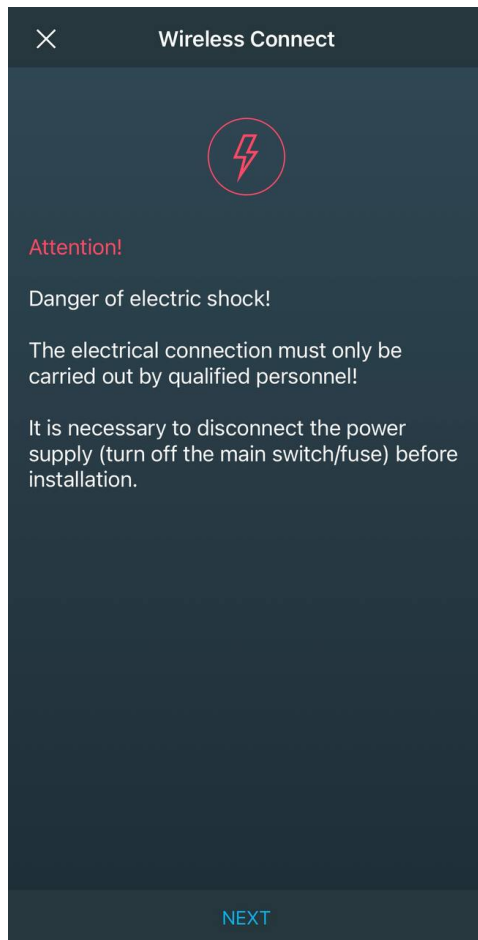
Make sure the device is connected correctly and turn on the power.

Wait 10 seconds for the device to boot.

Click the "+" button in the upper right corner of the screen for iOS or in the lower right corner of the screen for Android.



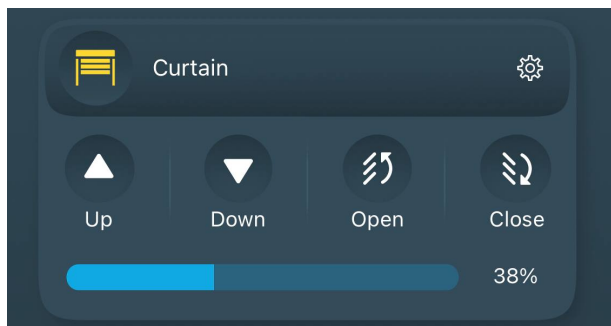
Before starting work, it is necessary to press the **Reset button** or press the connected curtain switch button **10 times with an interval of 0.5 seconds** to reset device.
If the reset is done correctly, the device **will beep and its indicator will flash blue**.



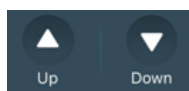
Do not turn off the device and wait until it is connected and added to the device list of your **ZigBee Hub!**

5. Control Screen

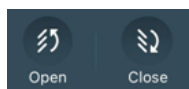
On this screen you can control the curtain.



Control buttons:



Raising and lowering the curtain (in full)




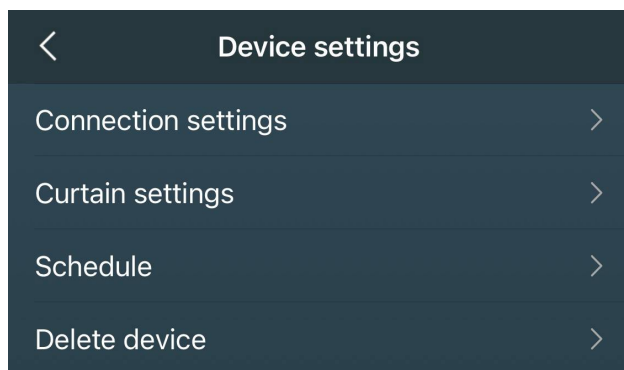
Lamella rotation



Partial raising and lowering of the curtain (regulated by moving the scale on the touch screen)

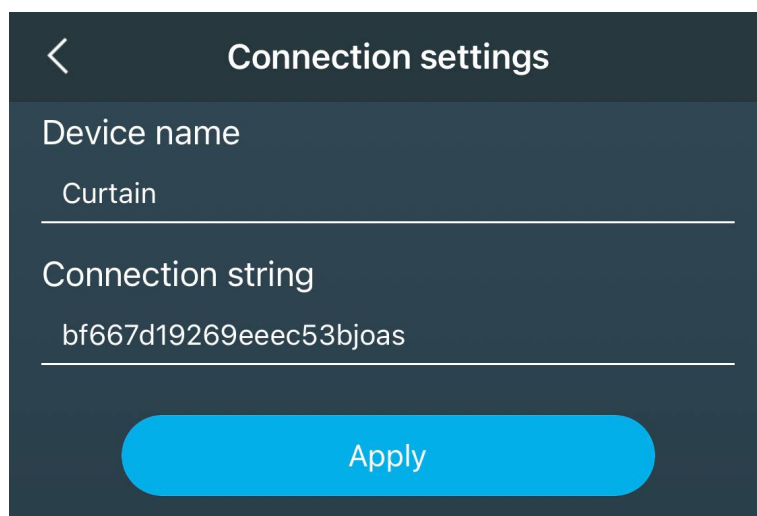
6. Settings Menu

To enter the settings menu, press the gear icon on the control screen .



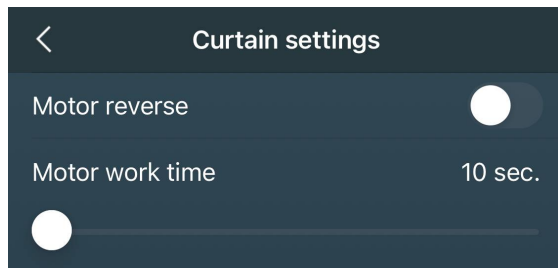
6.1 Connection Settings

In this menu, you can give a name to the device or view the connection ID.

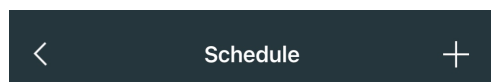


6.2 Curtain settings

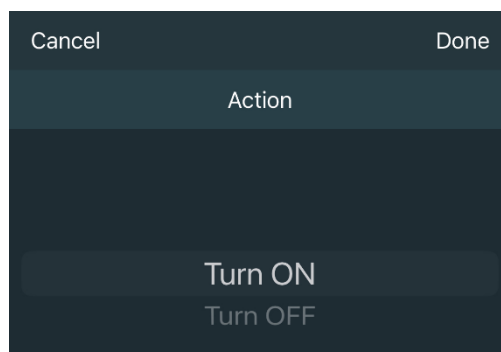
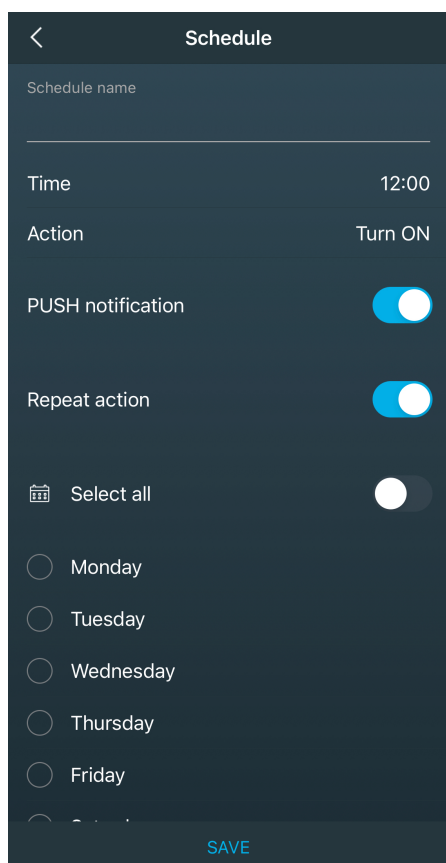
This section of the menu allows you to change the direction of the motor rotation if the polarity was incorrectly determined when connecting. At the same time, using the motor reverse function will correct the polarity error, in which the "Close" button opens the curtain and vice versa. Also, if necessary, in the section you can adjust the operation time of the motor which helps to correctly adjust the operating range of the curtain.



6.3 Schedule

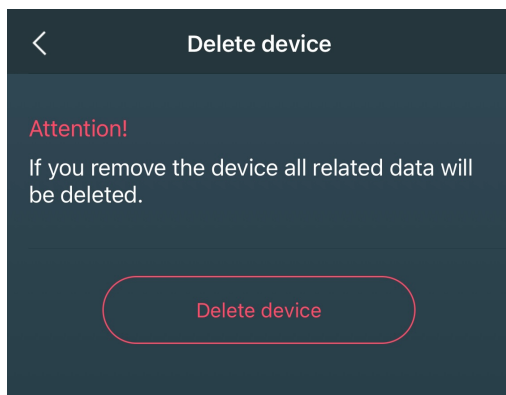


By clicking on the "+" a menu is displayed where you can give a name to the schedule, select the duration of the action, the action itself (Disable or Enable). You can receive notifications about the schedule on your mobile device. The schedule can be made recurring.



6.4 Delete device

To remove it, you must press "**Delete device**" button.



Technical support:

E-mail: support@partizan.global

Skype: partizan-support

Chat: +420 777 054 888 (Viber, Telegram, WhatsApp)



Technical support working time:

<https://partizan.global/support/technical-support>



Partizan software:

<https://apps.partizan.global/>