

**ZigBee HUB**  
**Myers MSH-ZB**

**User manual**



PREMIUM SMART HOME SYSTEMS  
by PARTIZAN

<b>1. How to start .....</b>	<b>3</b>
<b>2. Main elements of the device .....</b>	<b>5</b>
<b>3. Adding device to Partizan mobile application .....</b>	<b>6</b>
3.1 Download and install Partizan mobile application .....	6
3.2 Launch of Partizan mobile application .....	6
<b>4. Interface in Partizan mobile application.....</b>	<b>10</b>
4.1 Adding sub-devices to the Smart Hub .....	10
4.2 Control Screen .....	11
4.3 Settings Menu .....	11
4.4 Connection settings.....	12
4.5 Shared Access.....	12
4.6 Delete device.....	12

## 1. How to start

This device supports **Partizan Cloud Storage** service and **Partizan** mobile application for iOS and Android.

### Partizan Cloud Storage benefits:



Your data cannot be stolen or damaged.



No one can access your devices, live and archived video without your permission.



Access to your account and devices from anywhere in the world. Even mobile Internet is enough.



Partizan app won "**Best Mobile Video Surveillance App 2019**" international award.

To take full advantage of the device, **install Partizan mobile application** for iOS or Android:



Partizan mobile application for iOS:

<https://apps.apple.com/app/partizan/id1473001227>

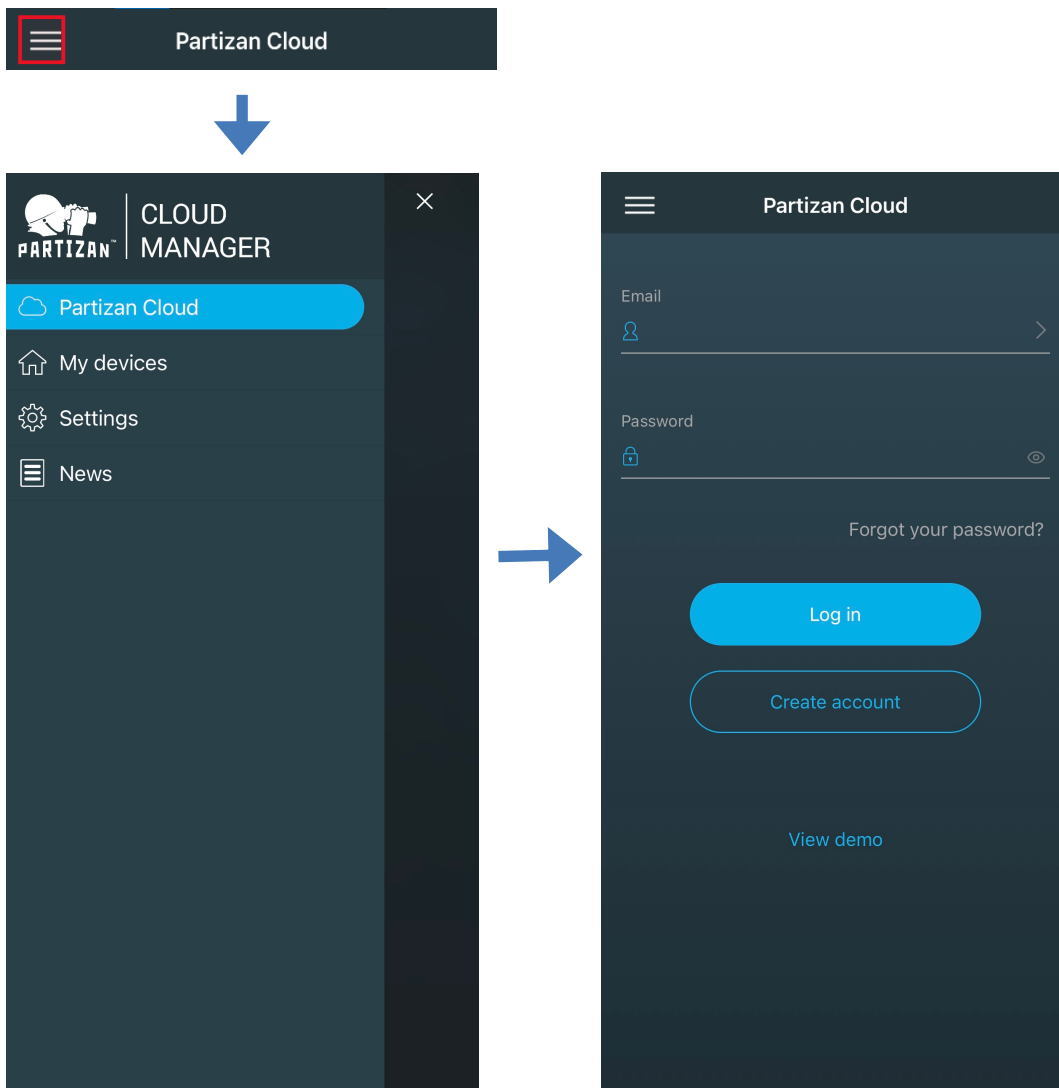


Partizan mobile application for Android:

<https://play.google.com/store/apps/details?id=com.partizan.pro>

To work with this device you need to **sign in to your cloud account**.

Open the app, use an **existing account** or **create a new one**:



After signing into the cloud account you can go directly to device setting.

If you have any questions,  
please contact our technical support:

E-mail: [support@partizan.global](mailto:support@partizan.global)

Skype: partizan-support

Chat: +420 777 054 888 (Viber, Telegram, WhatsApp)



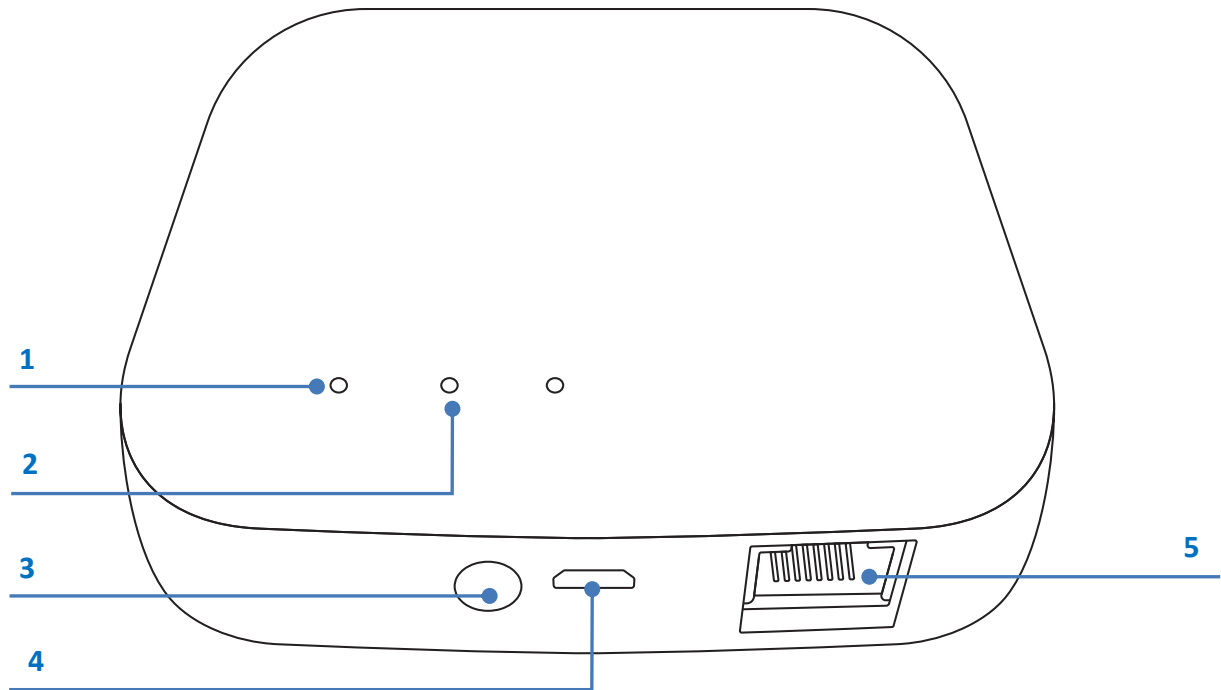
Technical support working time:  
<https://partizan.global/support/technical-support>



Partizan software:  
<https://apps.partizan.global/>

## 2. Main elements of the device

This device is designed to control Myers smart home automation sub-devices (blinds, dimmers, switches, etc.) using the ZigBee protocol.



1. Network Connection Indicator
2. Status Indicator
3. Reset Button
4. Power Socket
5. Network Cable Port

### 1) Network Connection Indicator (Green)

Network Connection Status:

- Steady off: network disconnected
- Steady on: network connected
- Blinks: data transmission accessed

### 2) Status Indicator (Green)

Configuration Status:

- Steady off: successful connection
- Steady on: ready for connection
- Blinks: access learning mode

### 3. Adding device to Partizan mobile application

#### 3.1 Download and install Partizan mobile application



Partizan mobile application for iOS:

<https://apps.apple.com/app/partizan/id1473001227>

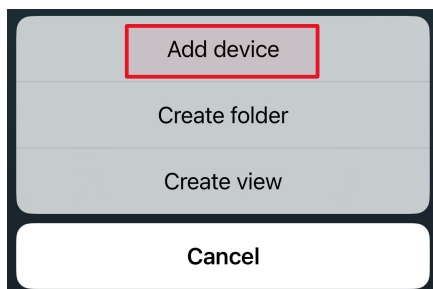


Partizan mobile application for Android:

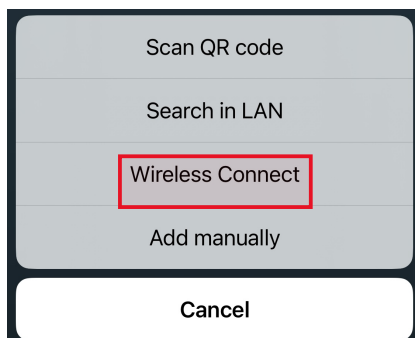
<https://play.google.com/store/apps/details?id=com.partizan.pro>

#### 3.2 Launch of Partizan mobile application

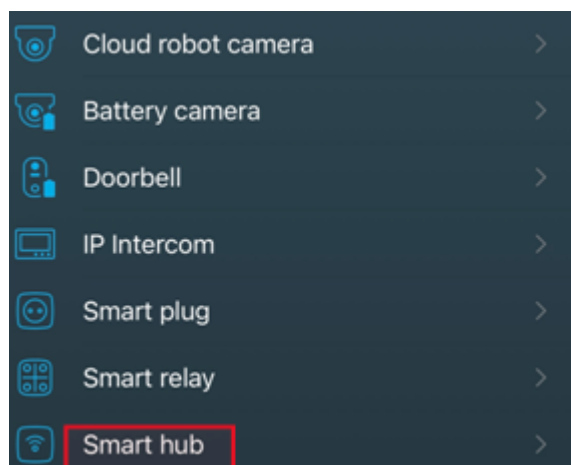
Press "+" **button** (top right corner of the screen for iOS or bottom right corner of the screen for Android). Press «**Add Device**».



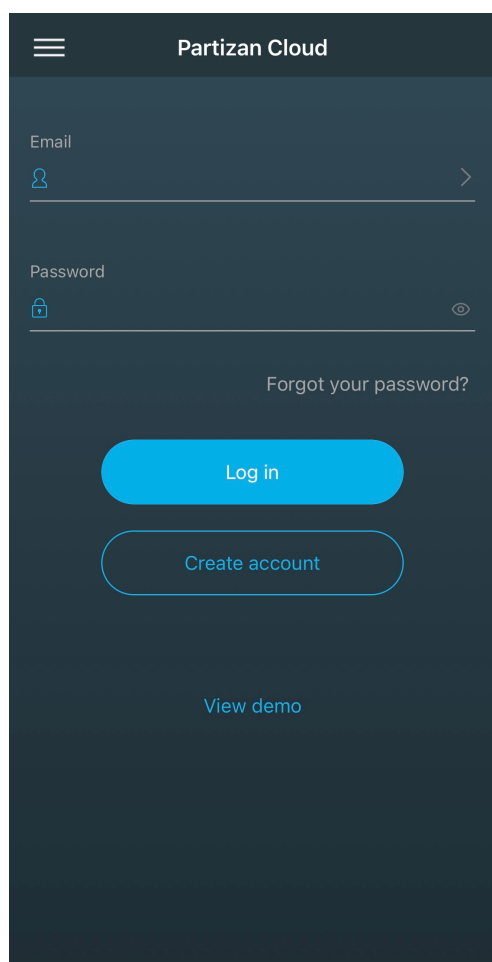
Select device connection type «**Wireless Connect**».



Select «**Smart Hub**» device



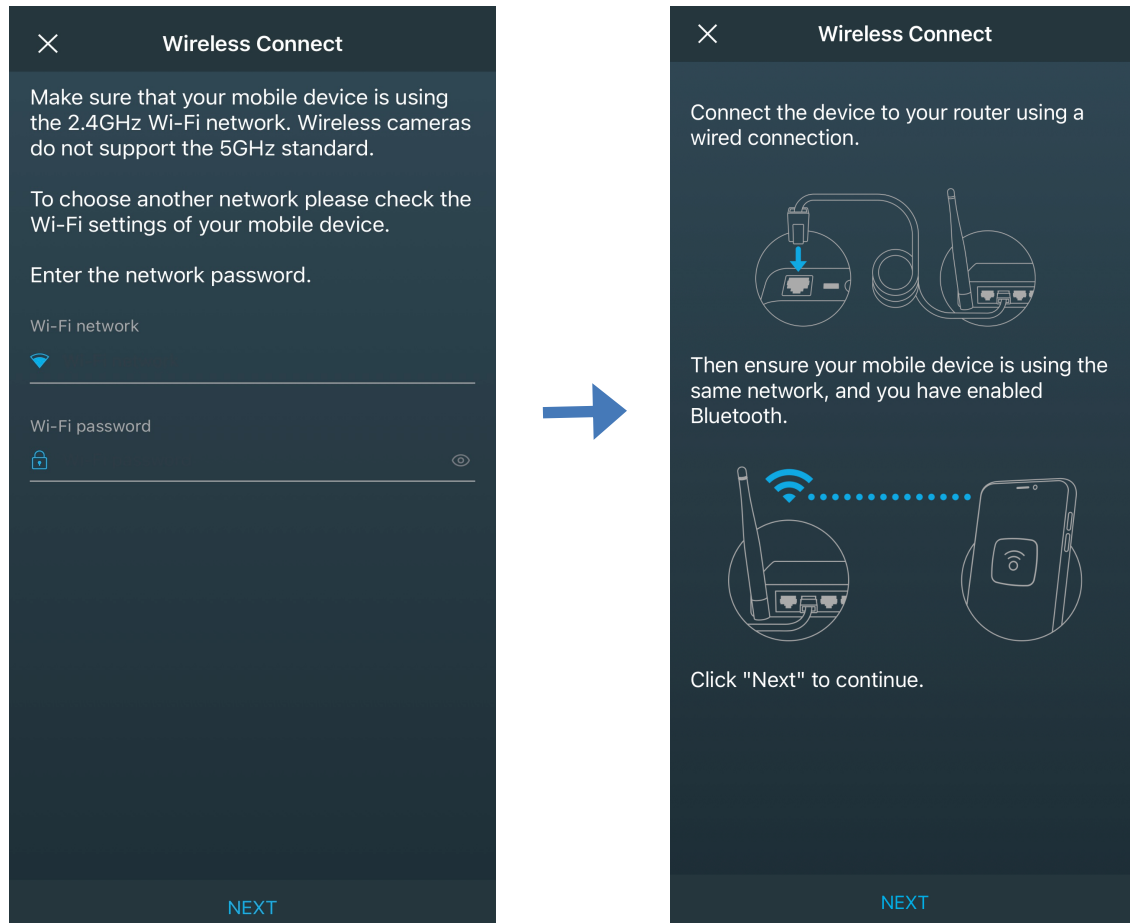
To work with this type of device, you must **log in to your cloud account**. Use an **existing account** or **create a new one**.



Enter the registration data of your Wi-Fi network (name and password) to which the mobile phone is connected. **The network standard must be 2.4GHz!**

Press «Next».

**Switch the device on.**



Connect the device to the router using a wired connection. Then make sure your mobile device is using the same network, and you have turned on Bluetooth.

**Wait 20 seconds for the device to boot up.**

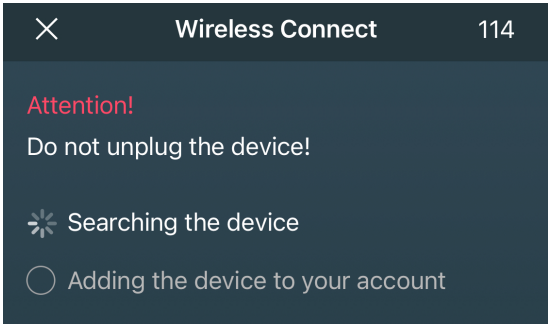
After the device boots up, hold down the reset button until the second LED lights up.





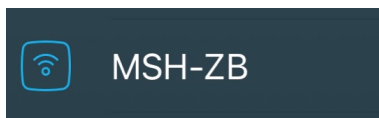
Press «Next».

The Smart Hub will receive the registration data of your Wi-Fi network and will be added to the list of devices in your cloud account.




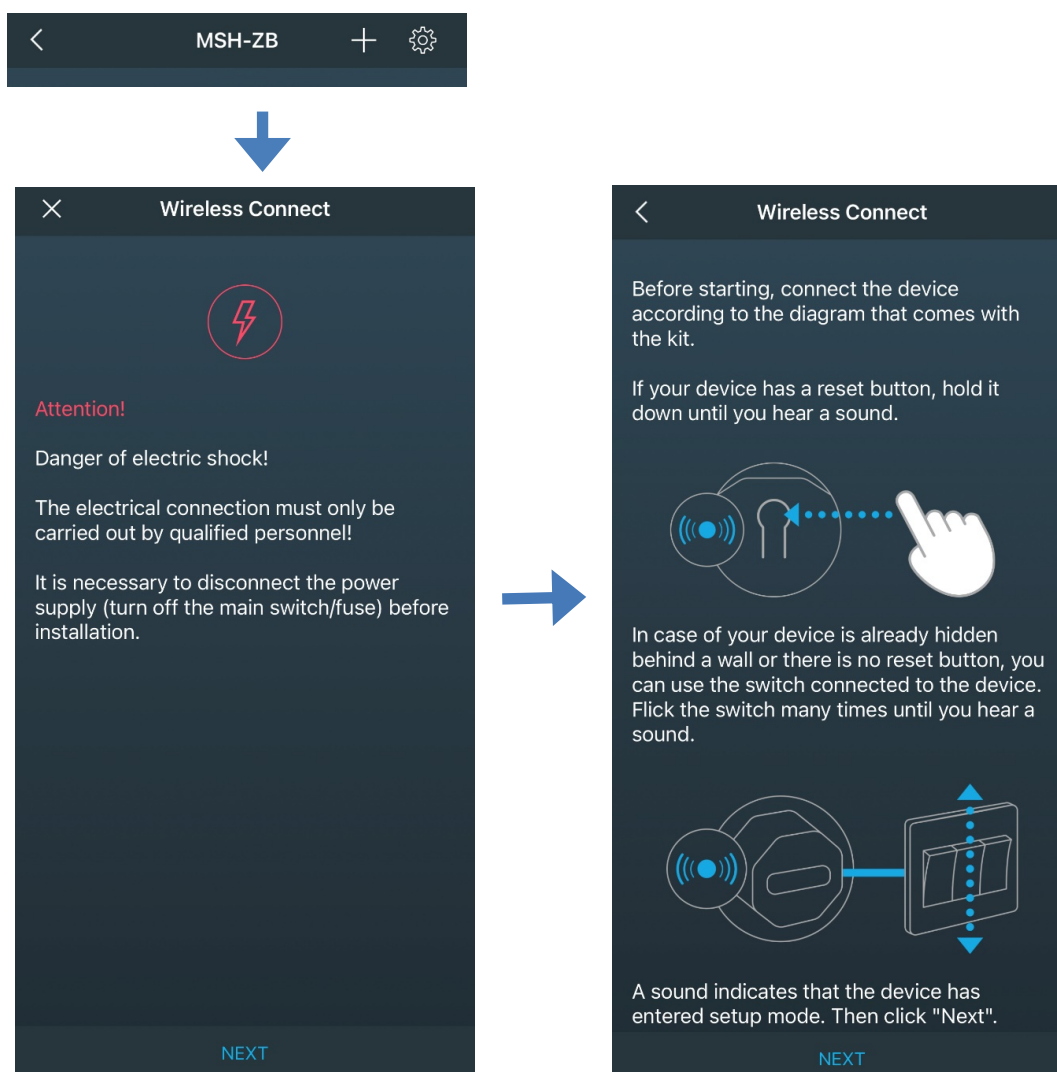
## 4. Interface in Partizan mobile application

Click on Smart Hub in the list of added devices.



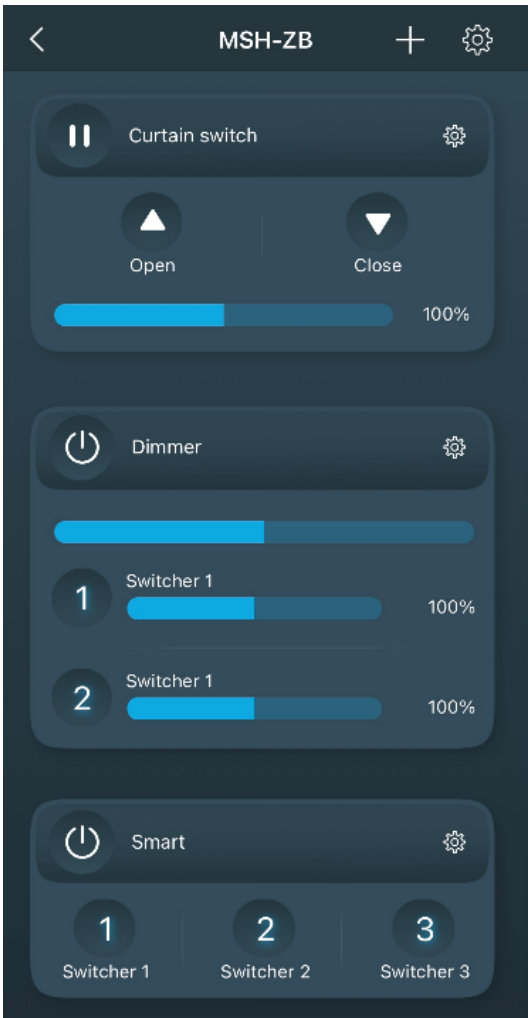
### 4.1 Adding sub-devices to the Smart Hub

Myers sub-devices for a smart home that work on the ZigBee protocol can be connected to the Smart Hub. To do this, click on the  icon in the upper right corner and follow the instructions that appear on the screen.




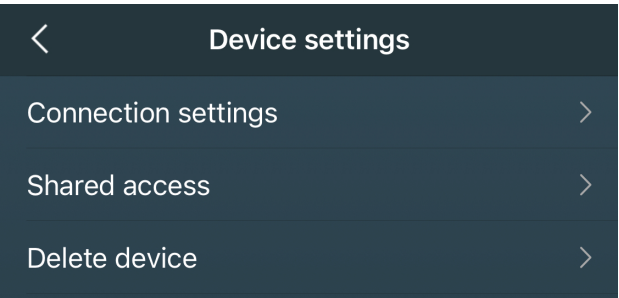
4.2 Control Screen

After adding sub-devices (roller blinds, dimmers, etc.), they will be displayed on the Smart Hub Control Screen. You can directly manage them from this screen.



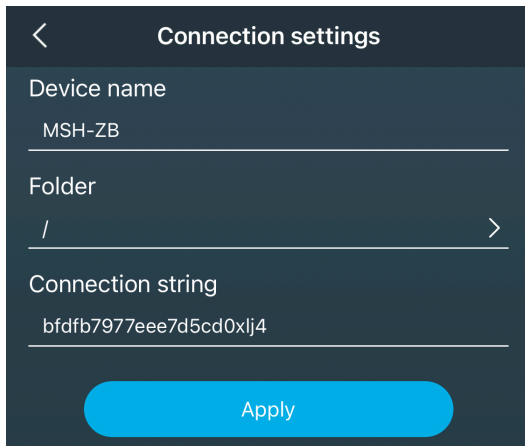
4.3 Settings Menu

To go to the settings menu, click the image of the gear icon  in the upper right corner of the Control Screen.



## 4.4 Connection settings

In this menu, you can give a name to the device or view the connection ID.



< Connection settings

Device name  
MSH-ZB

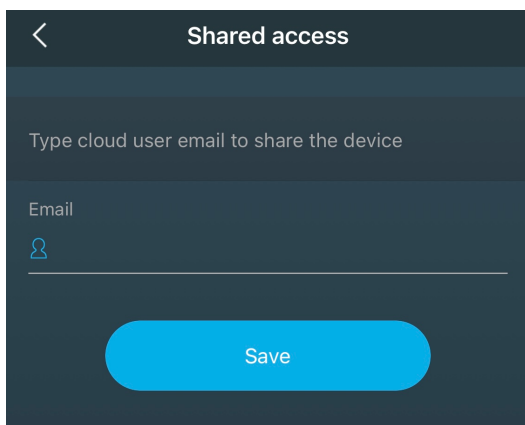
Folder  
/ >

Connection string  
bfdfb7977eee7d5cd0xlj4

Apply

## 4.5 Shared Access

To share access to the device with another user, you must enter his e-mail registered in Partizan Cloud.



< Shared access

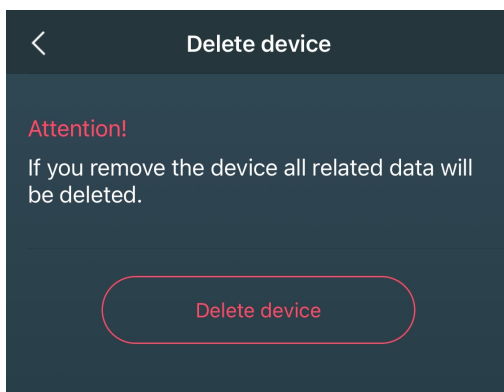
Type cloud user email to share the device

Email  
👤

Save

## 4.6 Delete device

To remove device, you must press "**Delete device**" button.



< Delete device

**Attention!**  
If you remove the device all related data will be deleted.

Delete device

### Technical support:

E-mail: [support@partizan.global](mailto:support@partizan.global)

Skype: partizan-support

Chat: +420 777 054 888 (Viber, Telegram, WhatsApp)



Technical support working time:

<https://partizan.global/support/technical-support>



Partizan software:

<https://apps.partizan.global/>