

Smart Light Switch
Myers MSW-3B-220V/100W ZB

User manual



PREMIUM SMART HOME SYSTEMS
by PARTIZAN

1. How to start3

2. Main elements of the device5

3. Connecting device to the power grid6

4. Adding device to Partizan mobile application9

4.1 Download and install Partizan mobile application.....9

4.2 Starting the device via ZigBee Hub.....9

5. Control Screen11

6. Settings Menu12

6.1 Connection Settings12

6.2 Switch names12

6.3 Switch settings13

6.4 Schedule15

6.5 Delete device.....16

1. How to start

This device supports **Partizan Cloud Storage** service and **Partizan** mobile application for iOS and Android.

Partizan Cloud Storage benefits:



Your data cannot be stolen or damaged.



No one can access your devices, live and archived video without your permission.



Access to your account and devices from anywhere in the world. Even mobile Internet is enough.



Partizan app won "Best Mobile Video Surveillance App 2019" international award.

To take full advantage of the device, **install Partizan mobile application** for iOS or Android:



Partizan mobile application for iOS:

<https://apps.apple.com/app/partizan/id1473001227>

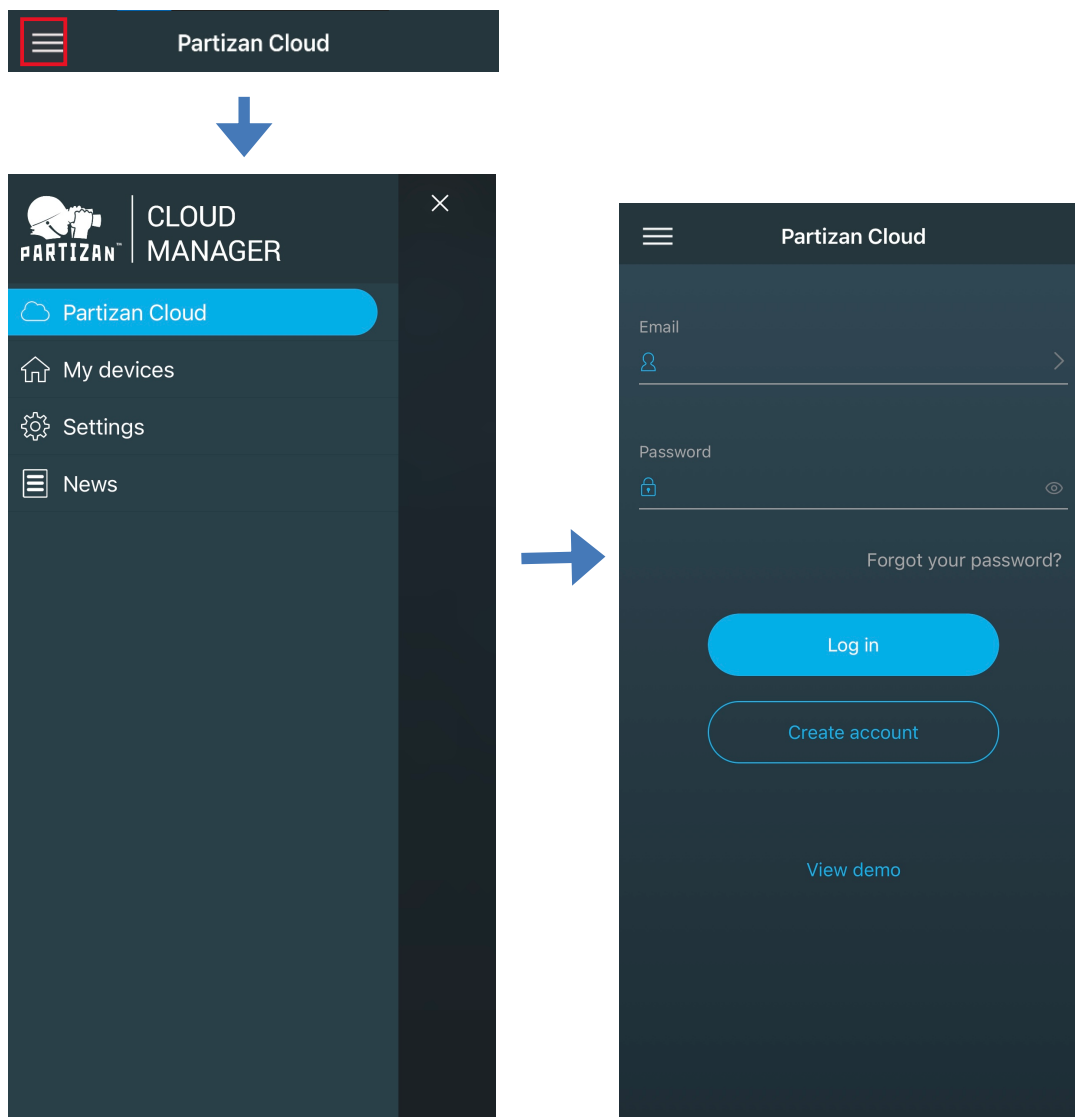


Partizan mobile application for Android:

<https://play.google.com/store/apps/details?id=com.partizan.pro>

To work with this device you need to **sign in to your cloud account**.

Open the app, use an **existing account** or **create a new one**:



After signing into the cloud account you can go directly to device setting.

If you have any questions,
please contact our technical support:

E-mail: support@partizan.global

Skype: partizan-support

Chat: +420 777 054 888 (Viber, Telegram, WhatsApp)



Technical support working time:
<https://partizan.global/support/technical-support>

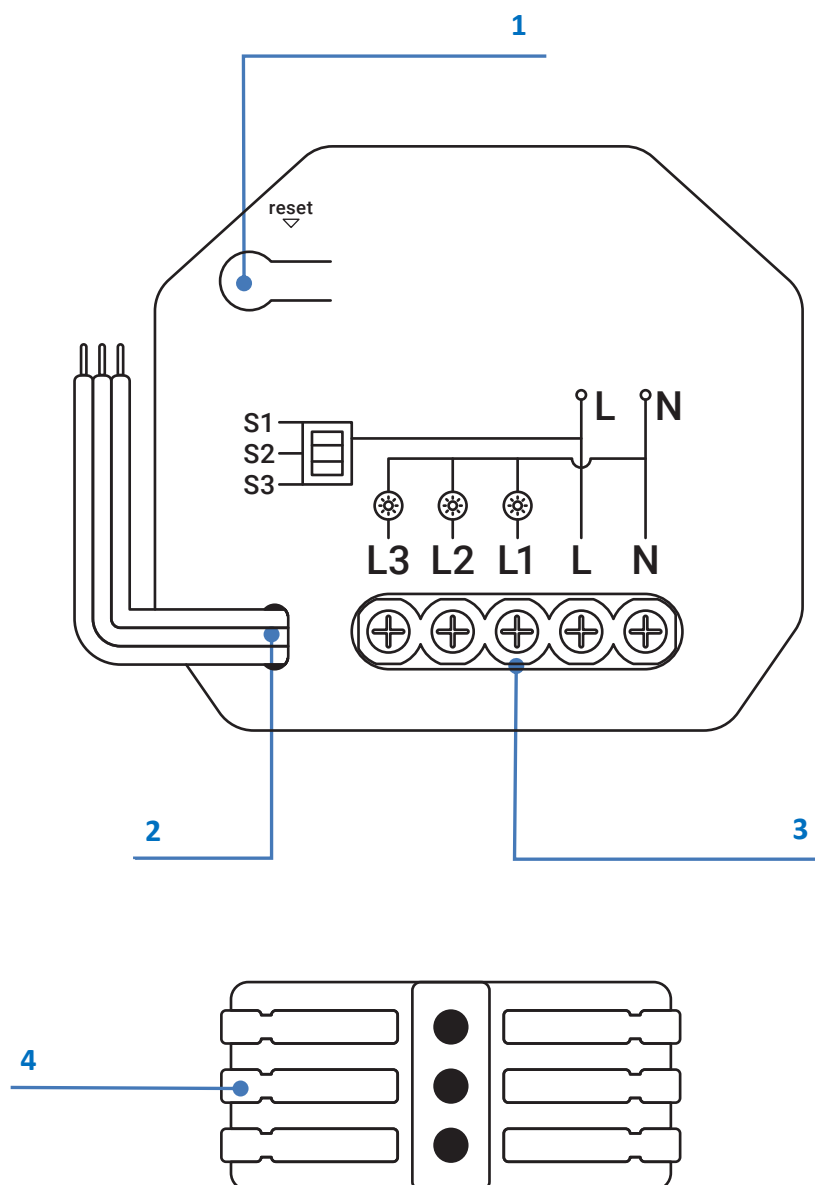


Partizan software:
<https://apps.partizan.global/>

2. Main elements of the device



WARNING! You will need a **ZigBee Hub** to connect and configure this device. **Make sure it is available and connected to the Partizan mobile app.**

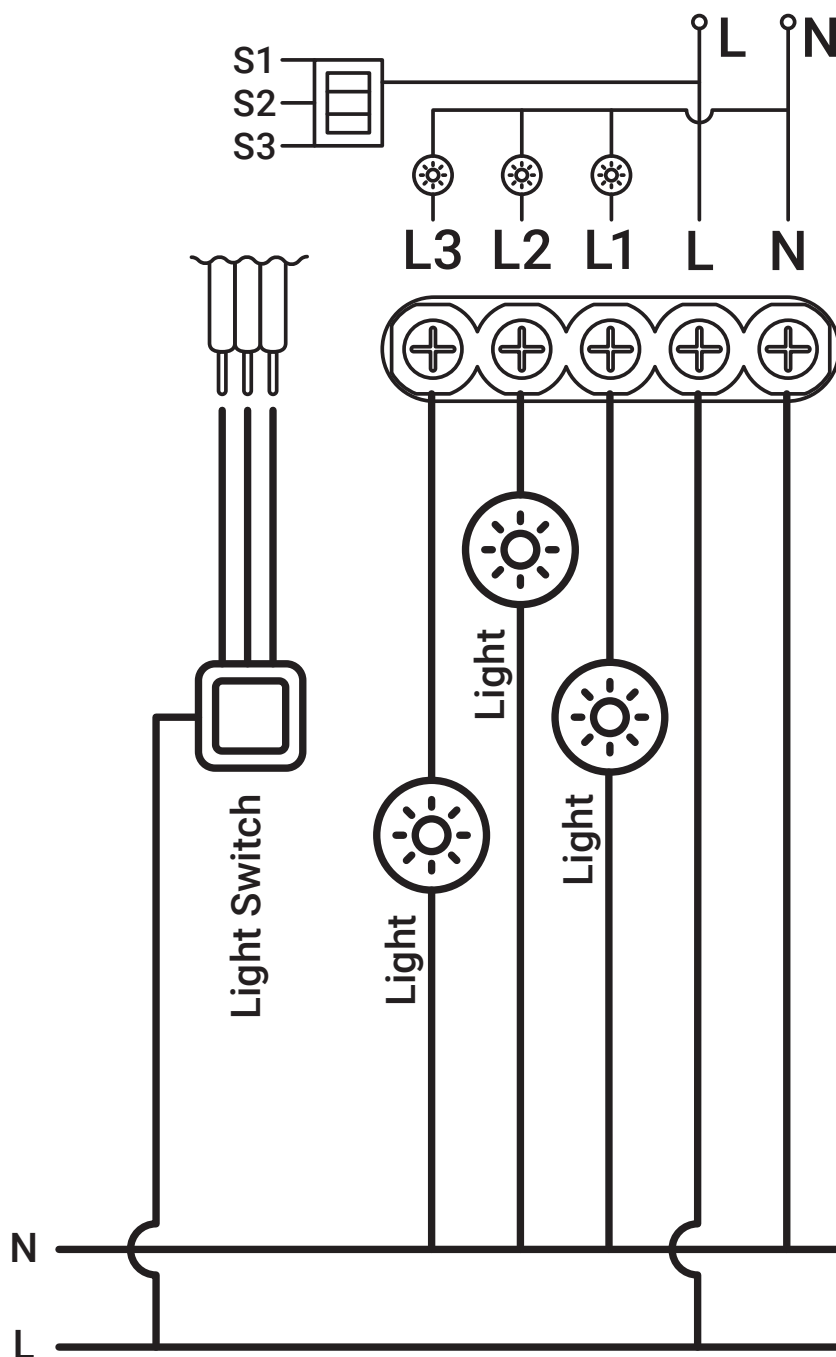


- 1) Reset button
- 2) Wires for S1-S3 switches
- 3) Contacts for L1-L3 light sources, L and N power contacts
- 4) Wire connecting clips for S1-S3

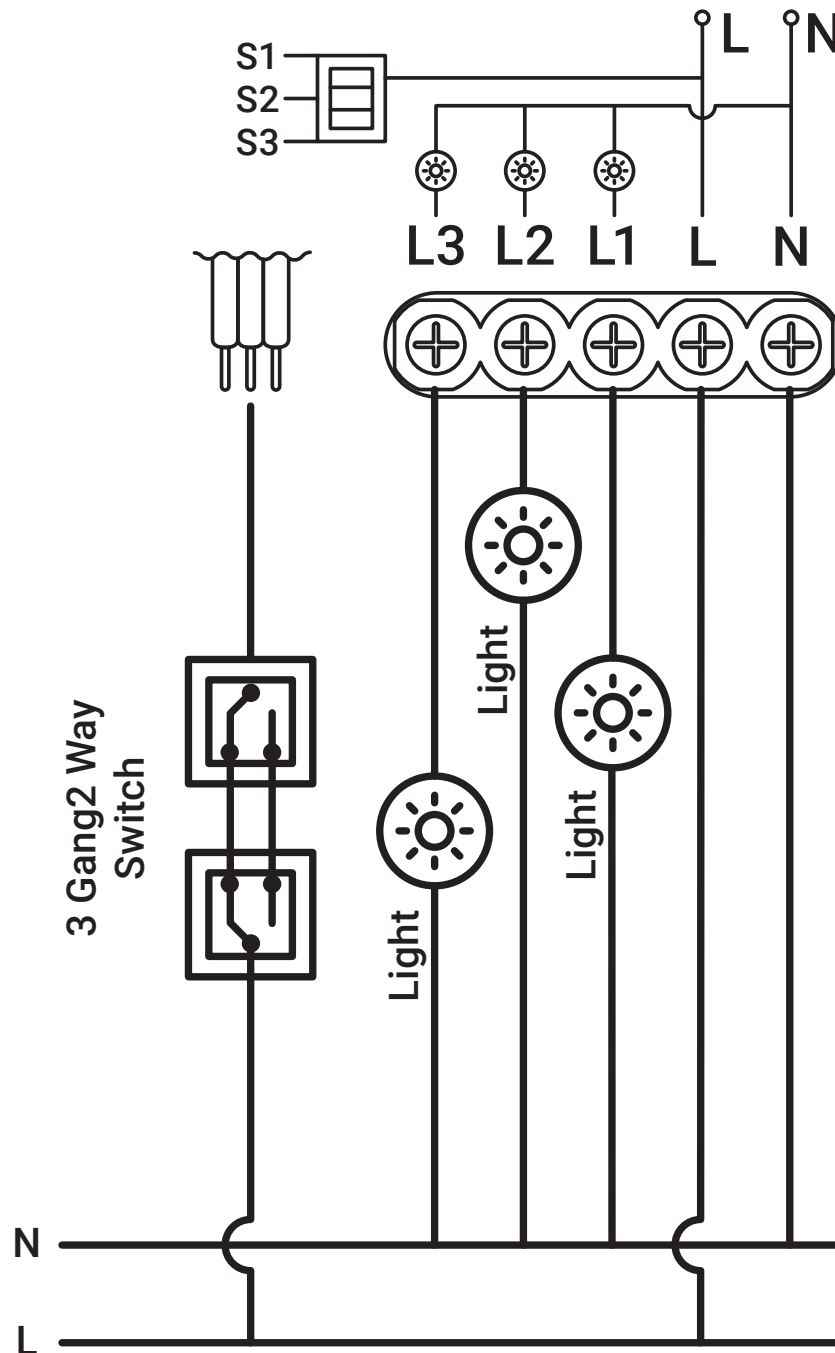
3. Connecting device to the power grid

The device is connected to the power grid using contacts L and N according to the following schemes:

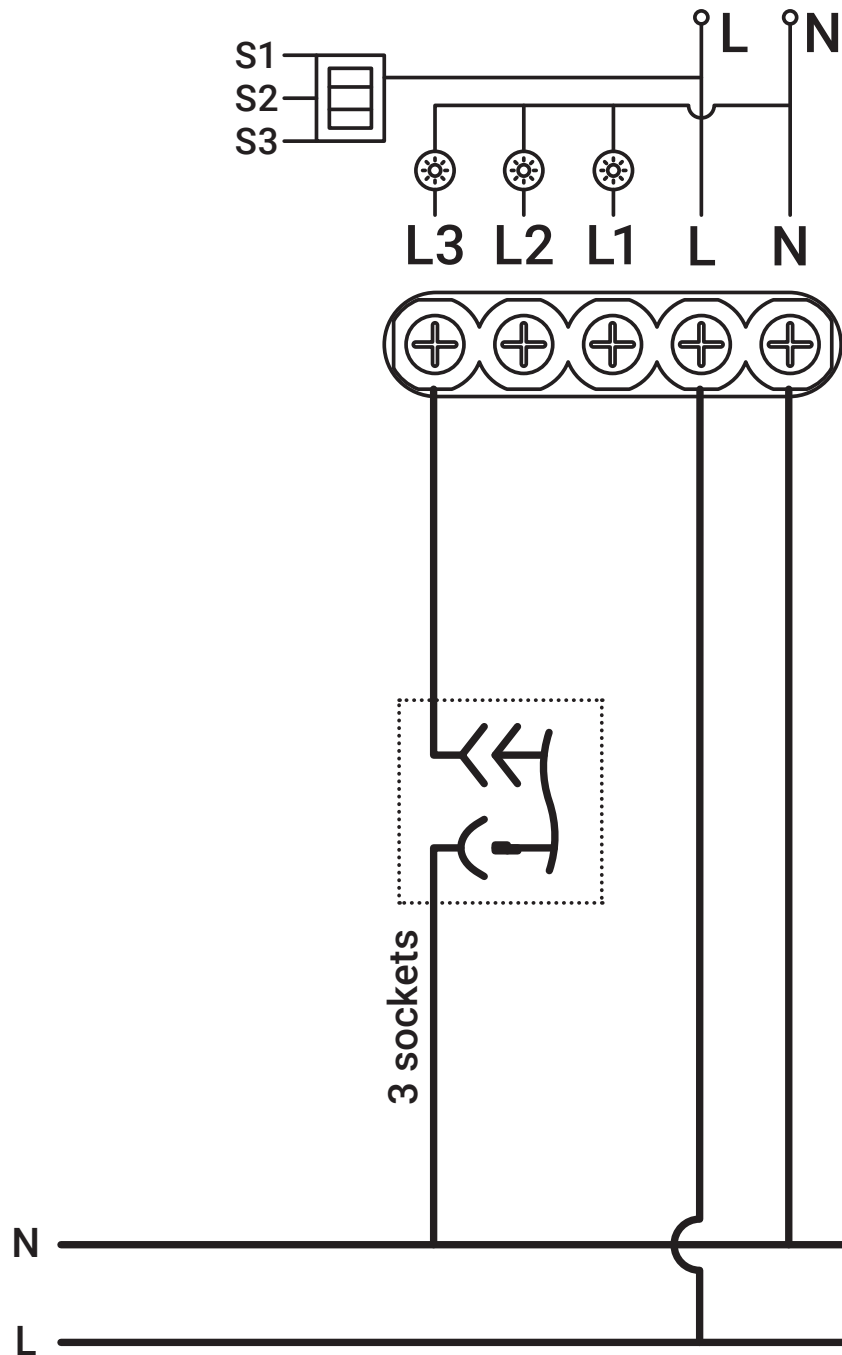
a) With one 3 Gang Switch:



b) With 3 Gang 2 Way Switch:



c) With Wall Socket (3 sockets available):



ATTENTION! Danger of electric shock! The connection must be performed by qualified specialists!
Before installation, it is necessary to de-energize the electrical network (turn off the switch/circuit breaker/fuse)

4. Adding device to Partizan mobile application

4.1 Download and install Partizan mobile application



Partizan mobile application for iOS:

<https://apps.apple.com/app/partizan/id1473001227>

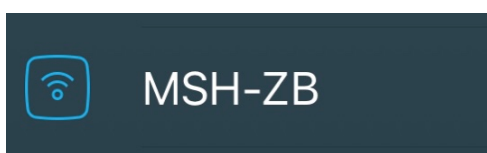


Partizan mobile application for Android:

<https://play.google.com/store/apps/details?id=com.partizan.pro>

4.2 Starting the device via ZigBee Hub

Launch **Partizan mobile application**. Click on **ZigBee Hub** in the list of added devices.



Make sure the device is connected correctly and turn on the power.

Wait 10 seconds for the device to boot.

Click the “+” button in the upper right corner of the screen for iOS or in the lower right corner of the screen for Android.

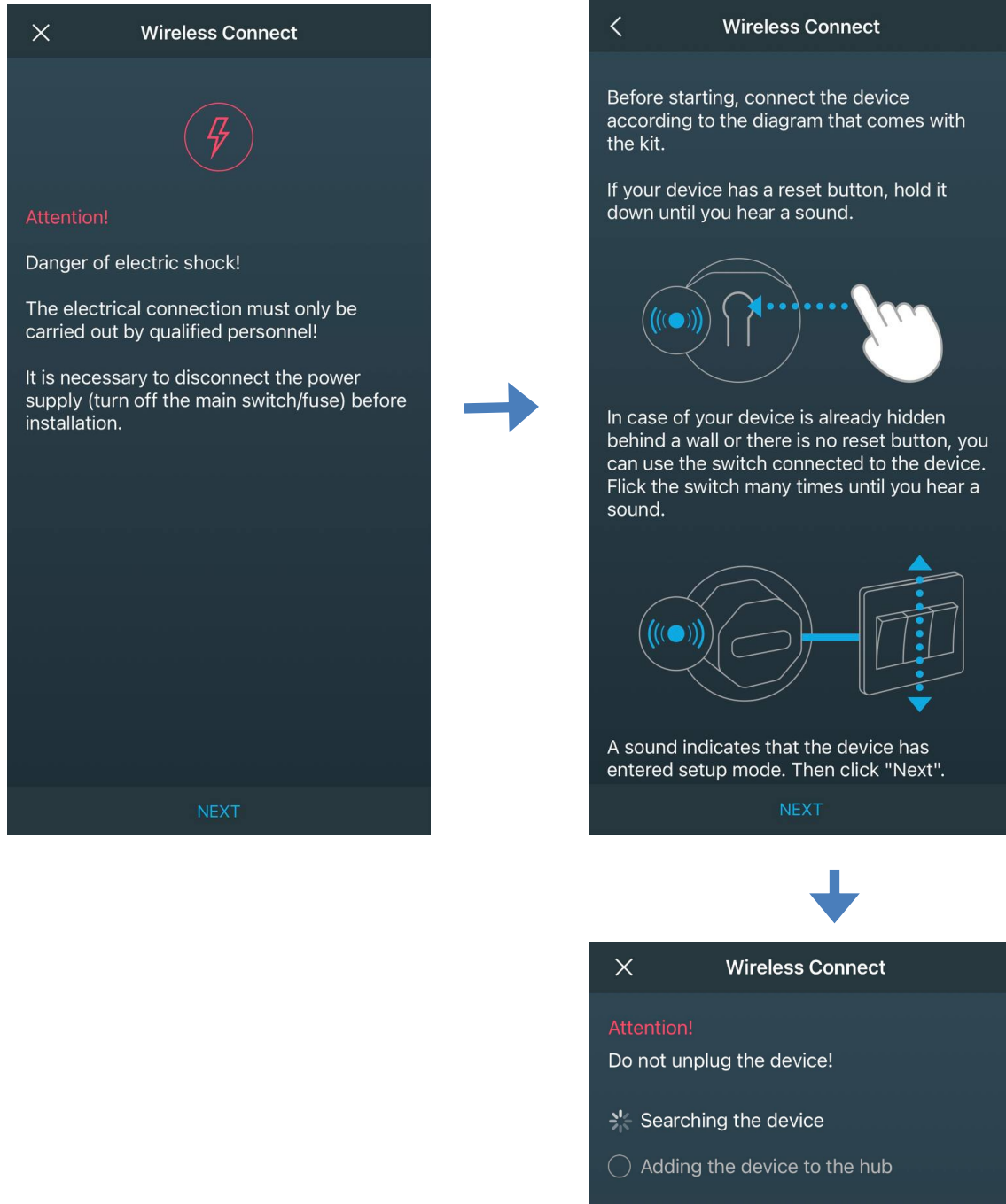


Before starting work, it is necessary to press the **Reset button** or press the connected switch button **10 times with an interval of 0.5 seconds** to reset device.

If the device is already connected and you need to reset it, you can also do it in two other ways:

- For the return switch, press one of its keys 10 times with an interval of 0.5 seconds.
- For the rocker switch, press one of its keys 20 times (two cycles) with an interval of 0.5 seconds.

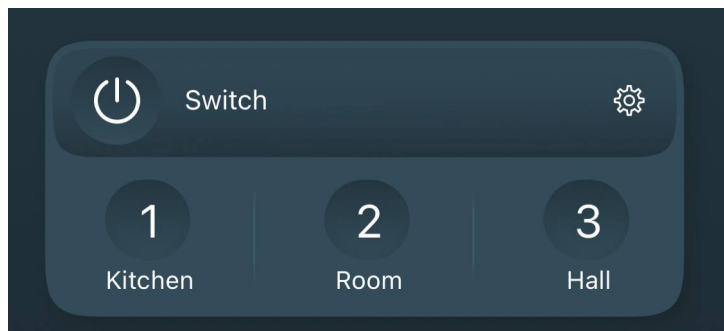
If the reset is done correctly, the device **will beep and its indicator will flash blue**.



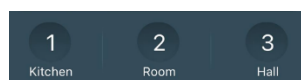
Do not turn off the device and wait until it is connected and added to the device list of your **ZigBee Hub!**

5. Control Screen

On this screen you can control the device.




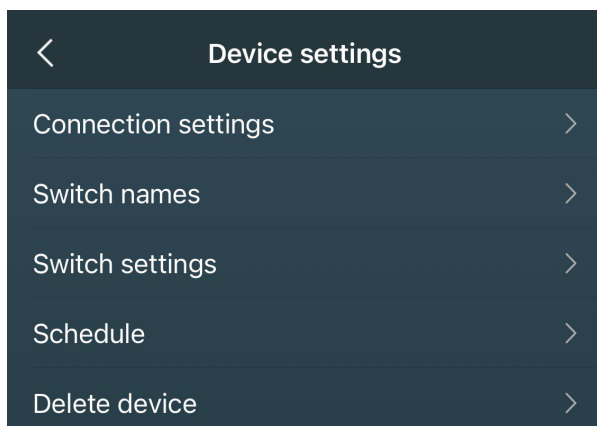
Control buttons:



Control each switch separately

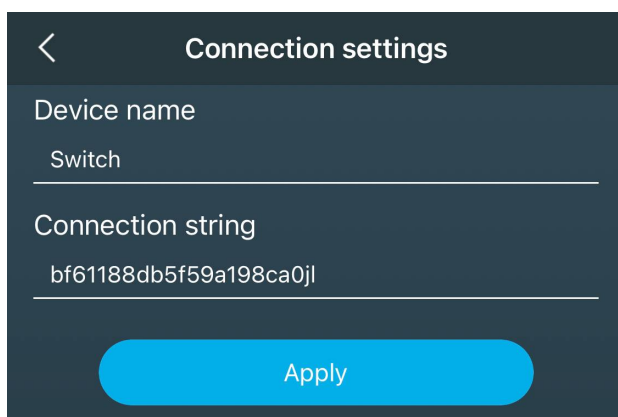
6. Settings Menu

To enter the settings menu, press the gear icon on the control screen .



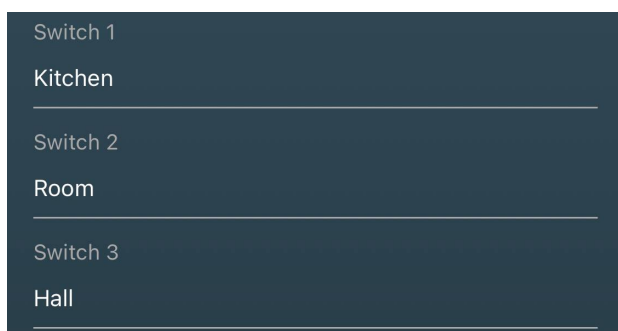
6.1 Connection Settings

In this menu, you can give a name to the device or view the connection ID.



6.2 Switch names

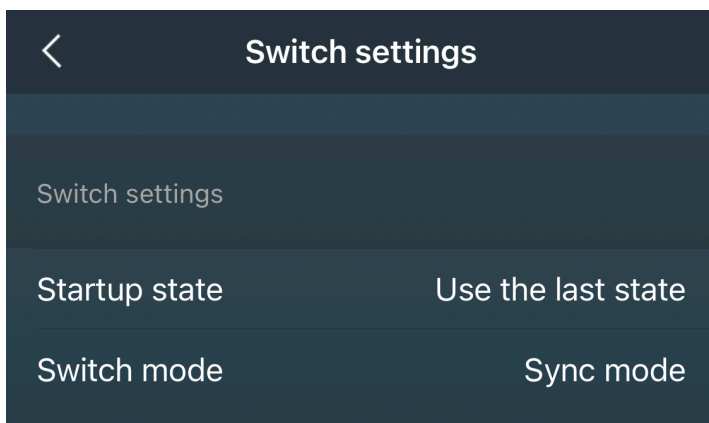
In this section, you can give the switches their own names for more comfortable use of the device.



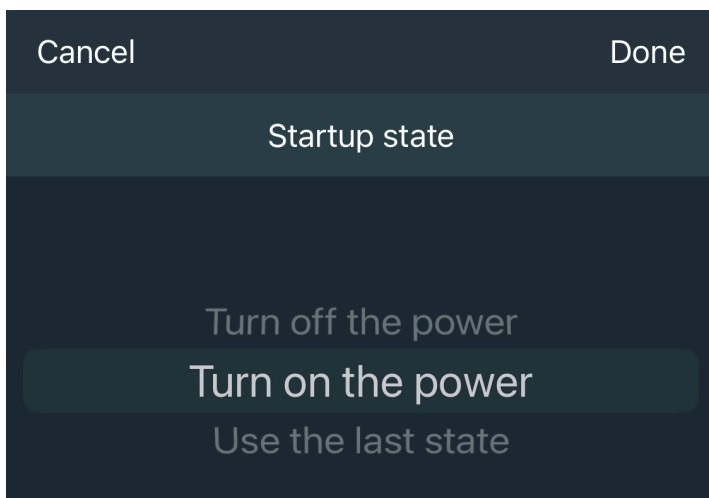
6.3 Switch settings

In this section, you can set special switch settings, namely:

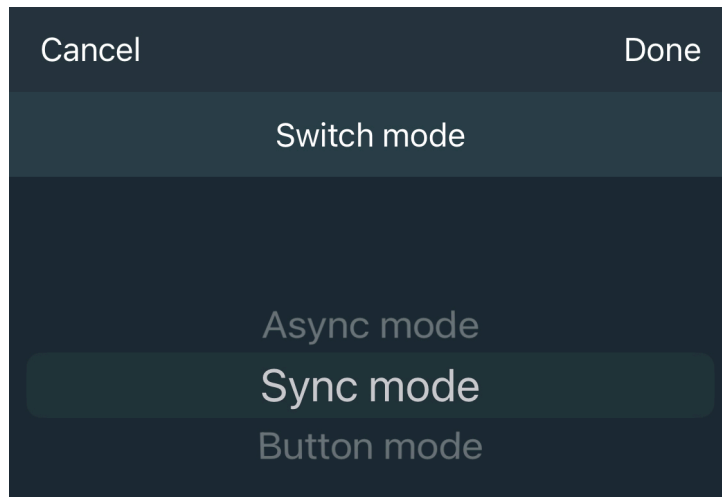
- Startup state
- Switch mode



Startup state is the state to which the device returns after the disappearance of the power supply.

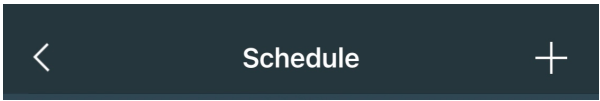


- Turn power off: when the power is restored, the light will be turned off.
- Turn power on: when the power is restored, the light will be turned off.
- Use the last state: when the power is restored, the state that was active before the power failure will be applied.

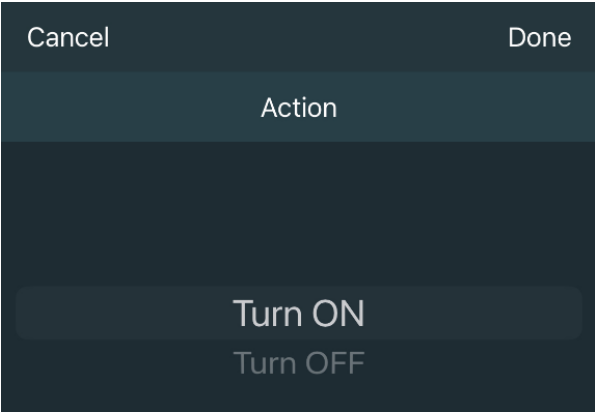
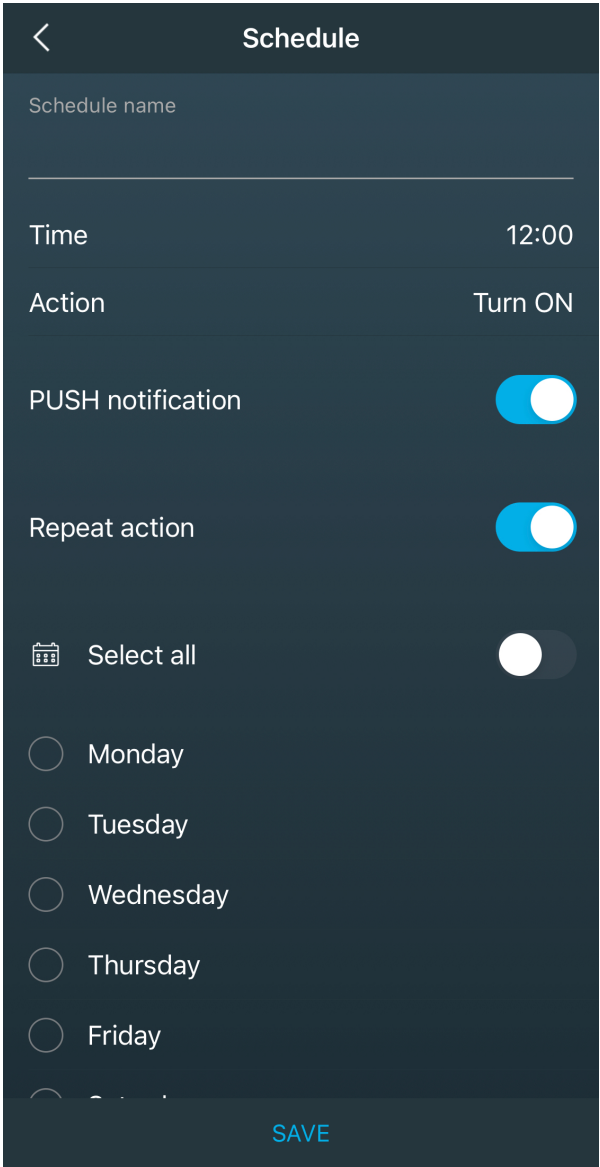


- Async mode: in this mode, the device is not configured so that the up key is "On" and the down key is "Off".
- Sync mode: in this mode, the device is configured so that the up key is "On" and the down key is "Off".
- Button mode: used when a reverse push-button switch is installed instead of a normal "rocker" switch.

6.4 Schedule

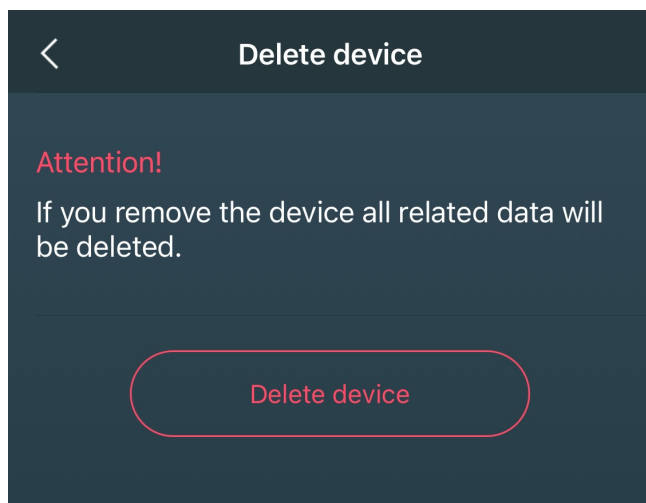


By clicking on the “+” a menu is displayed where you can give a name to the schedule, select the duration of the action, the action itself (Disable or Enable). You can receive notifications about the schedule on your mobile device. The schedule can be made recurring.



6.5 Delete device

To remove it, you must press "**Delete device**" button.



Technical support:

E-mail: support@partizan.global

Skype: partizan-support

Chat: +420 777 054 888 (Viber, Telegram, WhatsApp)



Technical support working time:

<https://partizan.global/support/technical-support>



Partizan software:

<https://apps.partizan.global/>